

# Implementing EIP-AGRI in the Netherlands - progress



European Agriculture Fund for Rural Development

# Update on

*By Annemiek Canjels, Rural Network Support Unit – EIP Agri*

1. Challenges
2. Dutch Innovation themes and initiatives
3. Programming, calls, tenders, difficulties
4. Linking practice to science
5. National EIP-AGRI Network

# Update on

*By Annemiek Canjels, Rural Network Support Unit – EIP Agri*

- 1. Challenges**
2. Dutch Innovation themes and initiatives
3. Programming, calls, tenders, difficulties
4. Linking practice to science
5. National EIP-AGRI Network

# Clear message in mind



- “Today’s farmers are new Renaissance men; they must possess the right mix of science, economics, entrepreneurialism and environmental awareness to meet the challenges of the future”
- “EIP – Agri is a new framework to boost innovation through networking and collective work”
- “Links between research, farmers & industry are too weak, too many innovations are still left unexploited and too many research questions from the sector remain unanswered”

# A Brussels new Renaissance ...



- DG AGRI – Rob Peters, Inge van Oost, Iman Boot
- DG RTD
- EIP Servicepoint – Willemine Brinkman & colleagues
- ENRD Subgroup Innovation members
- AKIS contacts
- ERIAFF Network

# The challenges

- Food security, Climate change, Resource efficiency, Health
- Fair prices, negotiating power, control
- Entrepreneurship, creativity, curiosity, use of knowledge, courage, skills
- Reconnecting consumer and producer

# Update on

*By Annemiek Canjels, Rural Network Support Unit – EIP Agri*

1. Challenges
- 2. Dutch Innovation themes and initiatives**
3. Programming, calls, tenders, difficulties
4. Linking practice to science
5. National EIP-AGRI Network

# Innovation

- An idea put into practice
- The implementation of a new or significantly improved product (good or service) or process, a new marketing method, or a new organisational method in business practices, workplace organisation or external relations (OECD)

# Eligible innovation themes NL

- Transition from cost reduction strategy towards added value strategy; new businessmodels, new market concepts
- Lower production risks, stronger position of farmers in the chain, reduced market failure
- Lower use of resources, lower emissions
- Climate mitigation, CO2 reduction
- Climate adaptation (focus on water issues)
- Animal welfare, animal health, reduced public health risks

# **“Hot” in the traditional groups**

- More with less, better quality, higher yields
- Circular production systems
- High tech systems
- Emission reduction
- New production methods (soilless, LED f.i.)
- Crop protection, plant resistancy
- Precision farming, sensoring
- Organic farming

# **“Hot” among new stakeholders**

- Biobased materials and substances
- Healthy diets and medicinal substances
- Short supply chains, business to consumer
- Local for local small scale and large scale
- E-sales and direct e-marketing
- Consumer, physicians, students, children, dietarians involvement
- Personalized foods, novel foods
- Urban farming, vertical farming, metropolitan agriculture

# Update on

*By Annemiek Canjels, Rural Network Support Unit – EIP Agri*

1. Challenges
2. Dutch Innovation themes and initiatives
- 3. Programming, calls, tenders, difficulties**
4. Linking practice to science
5. National EIP-AGRI Network

# State of play



# Innovation measures in EAFRD selected in NL

- Cooperation Operational Groups EIP (art 35)
- Cooperation otherwise (art 35)
- Innovation or modernisation Investment (art 17)
- Knowledge transfer and demonstration (art 14)
- Guarantee market introduction (art 17)

*Difficult to execute a combination of measures around an OG under the tender regime !*

# Programming, calls, tenders

- 11 out of 12 Regional authorities will execute EIP – Agri
- Programming measure 16 (art. 35) EIP / cooperation about 3% = 42 mln budget excl co-use of measures 01 (art.14) and 04 (art. 17)
- Draft of a shared Call for Proposals with regional accent in progress
- Draft of shared Advisory body for tenders
- First calls expected late 2015 or early 2016

# Update on

*By Annemiek Canjels, Rural Network Support Unit – EIP Agri*

1. Challenges
2. Dutch Innovation themes and initiatives
3. Programming, calls, tenders, difficulties
- 4. Linking practice to science**
5. National EIP-AGRI Network

# Actual linking of practice to science

- Network building for the EIP - Knowledge & Innovation Community
- Underlining cross-over innovation opportunities
- Linking EU / national / regional challenges
- Participate in Focus Groups
- EAFRD: Rural Development Programme
- EFRD: Regional “Research & Innovation Strategy for Smart Specialization”

# EAFRD – EIP Agri – Horizon 2020

- Horizon 2020 scoping papers – main R&D&I challenges
- Prepare for calls WP 2016/2017
- EIP- pilots in 2014 with Wageningen University Research Center
- Participation in ERIAFF network
- Application for H2020 Multi – Actor Network
- But how to evolve from OG to MA and Thematic Networks ?

# R&D and operational groups

- NL participates in EIP's focus groups
- H2020 Thematic network projects have been submitted
- H2020 multi-actor project proposals have been submitted
- National R&D policy: Topsector calls oblige public-private partnerships (with larger companies – less farm level oriented due to abolishment commodity (levy) boards?)

# Update on

*By Annemiek Canjels, Rural Network Support Unit – EIP Agri*

1. Challenges
2. Dutch Innovation themes and initiatives
3. Programming, calls, tenders, difficulties
4. Linking practice to science
5. **National EIP-AGRI Network**

# National EIP-AGRI Network

The RB-National Support Unit of the Network Rural Development provides:

- Inspired team with 2 EIP contacts
- Lively website with strong linkage to the site and news EIP Servicepoint
- Events, Newsletters, blogs, database
- Support to regional authorities, innovation brokers and project initiators

# Stakeholders

- Farmers (with new skills)
- Researchers
- Innovation brokers
- Marketeers, communication experts
- Storytellers, designers, teachers, chefs
- IP-experts, trade experts, experts from along the chain, incl. industry, suppliers, seed companies, transporters ...

# Crossovers

Tuinbouw & Uitgangsmaterialen heeft vele waardevolle cross-overs met andere topsectoren

## Water

- Duurzaam en efficiënt gebruik van water (reduce, reuse en recycle)
- Verminderen van emissies naar grond- en oppervlaktewater
- Droogte maakt tolerantie
- Urban indoor farming

## Life Sciences

- Gezondheid
  - geavanceerde geneesmiddelen
- Technologie
  - ondersteunende technologie
  - systeembiologie
  - synthetische biologie

- Gezonde voeding
  - betere smaak
  - minder vet
- Gezondheidsbevorderend
  - tegen obesitas
  - anti-oxidanten

## Agro-Food

- Gezonde voeding
- Duurzaamheid
- Biodiversiteit
- Fytosanitairstrategieën
- Bodembeheer
- Plantenziekten

## Chemie

## Logistiek

- Infrastructuur
- Ketenzorg en logistieke optimalisatie
  - ICT, track & trace, RFID
- Multi-modale netwerken
- Duurzaamheid van vervoer en conditionering

## High Tech materialen & systemen

- Besturing, precisietechnieken, sortering en afzet
  - Robotisering, smart systems
- Geavanceerde test
  - LTO, bio-nanotechnologie
- Logistiek
  - RFID track & trace

## Creatieve industrie

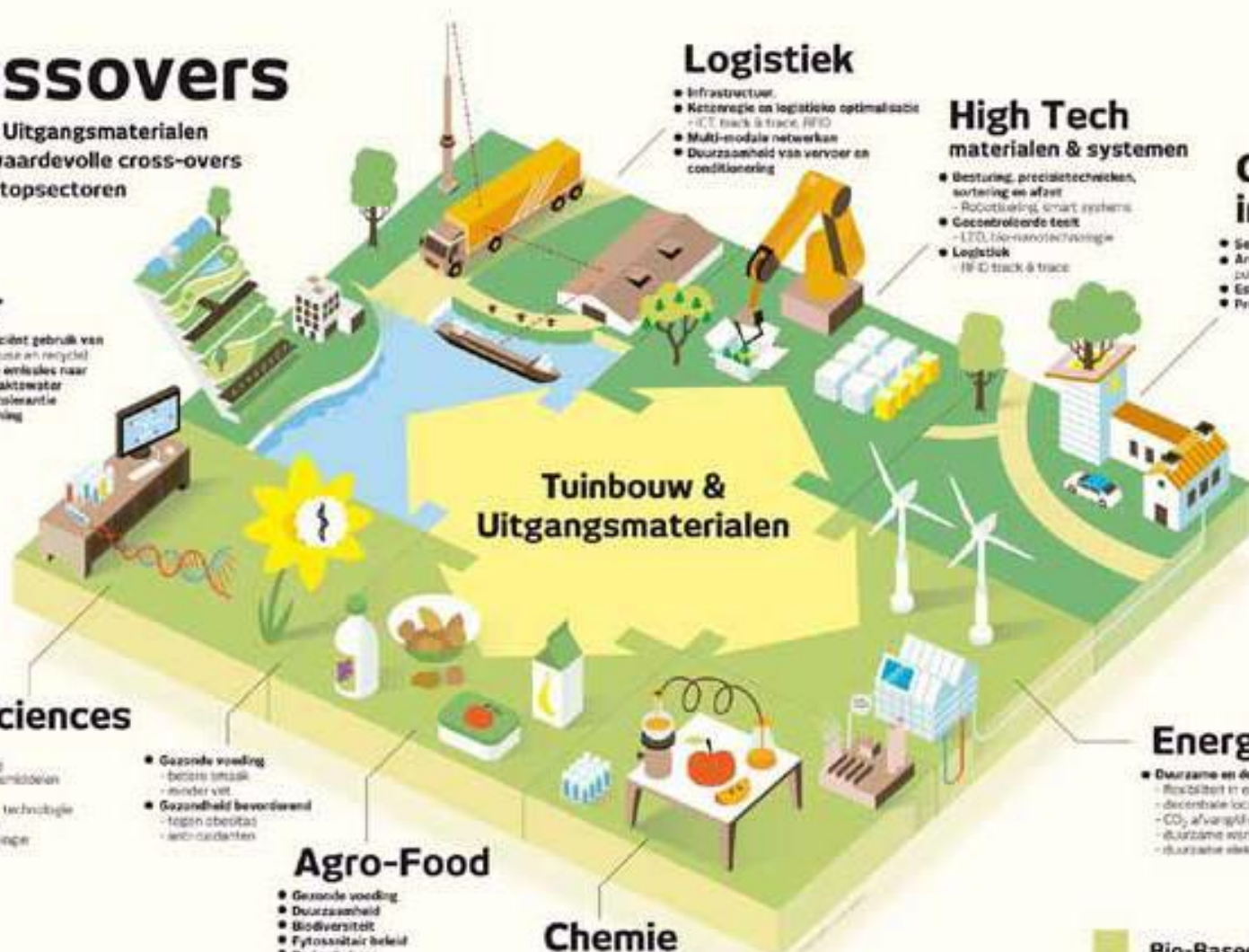
- Sector imago
- Architectuur (ontwerp van groen in de publieke ruimte)
- Esthetische kas
- Product design

## Energie

- Duurzaam en decentrale energieproductie
  - flexibiliteit in energievoorziening door WKK
  - decentrale lokale energiesystemen
  - CO<sub>2</sub> afvangtechniek
  - duurzame warmteproductie
  - duurzame elektriciteitsproductie

## Bio-Based Economy

Stoffen voor andere sectoren door veredeling, faciliteren optimale fractionering door veredeling, gebruik bio-based materialen



# **Supportive environment for innovation (ENRD)**

- Communication & coordination
- Minimise administrative burden
- Room for failure
- Room for unexpected ideas & cross-overs
- Develop the innovation culture & community
- Wide stakeholder involvement, new expertise
- Combine funds and measures
- Assess (emerging) market needs
- Clear framework for researchers, advisory services, innovation brokers

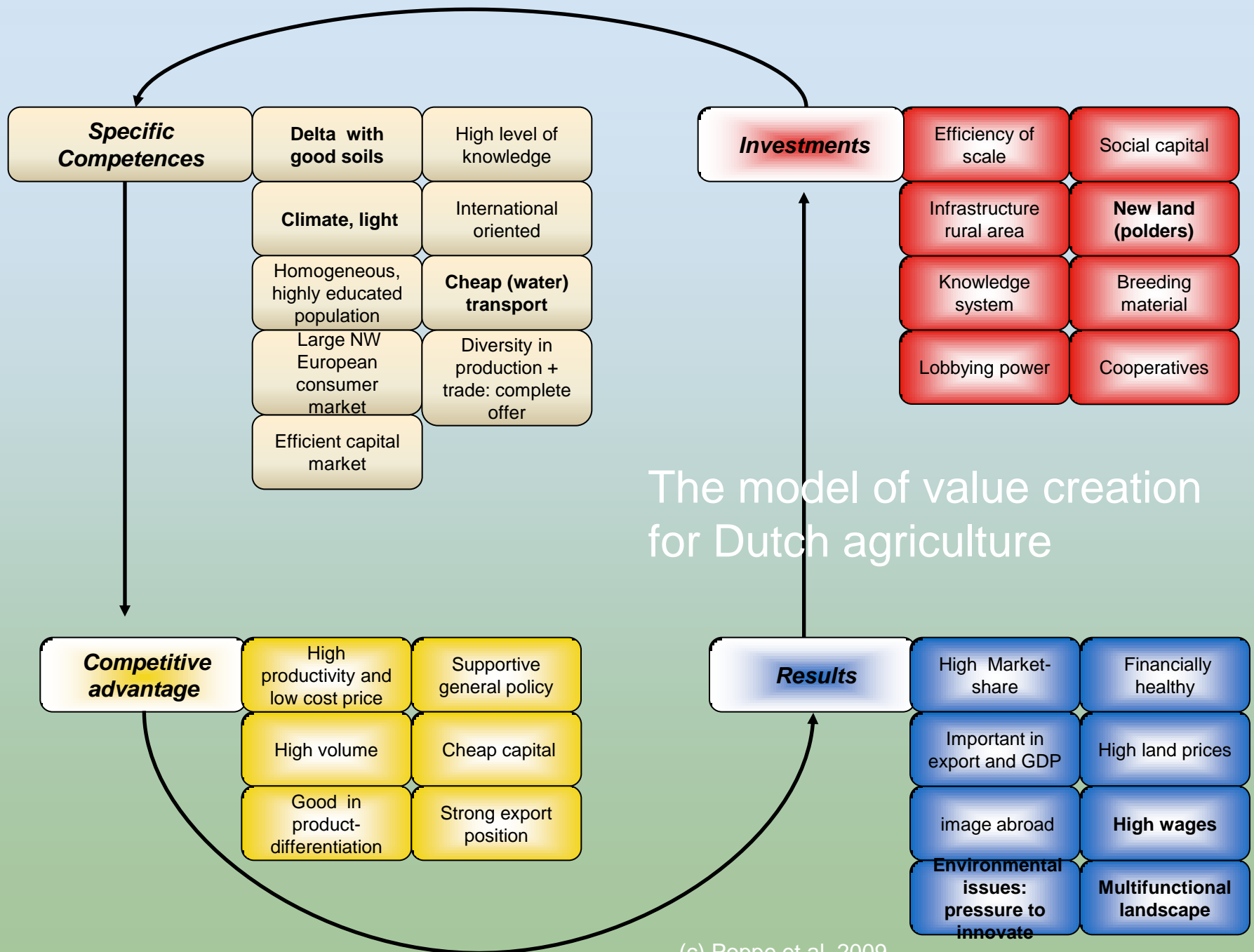
# Questions





# Approach and model

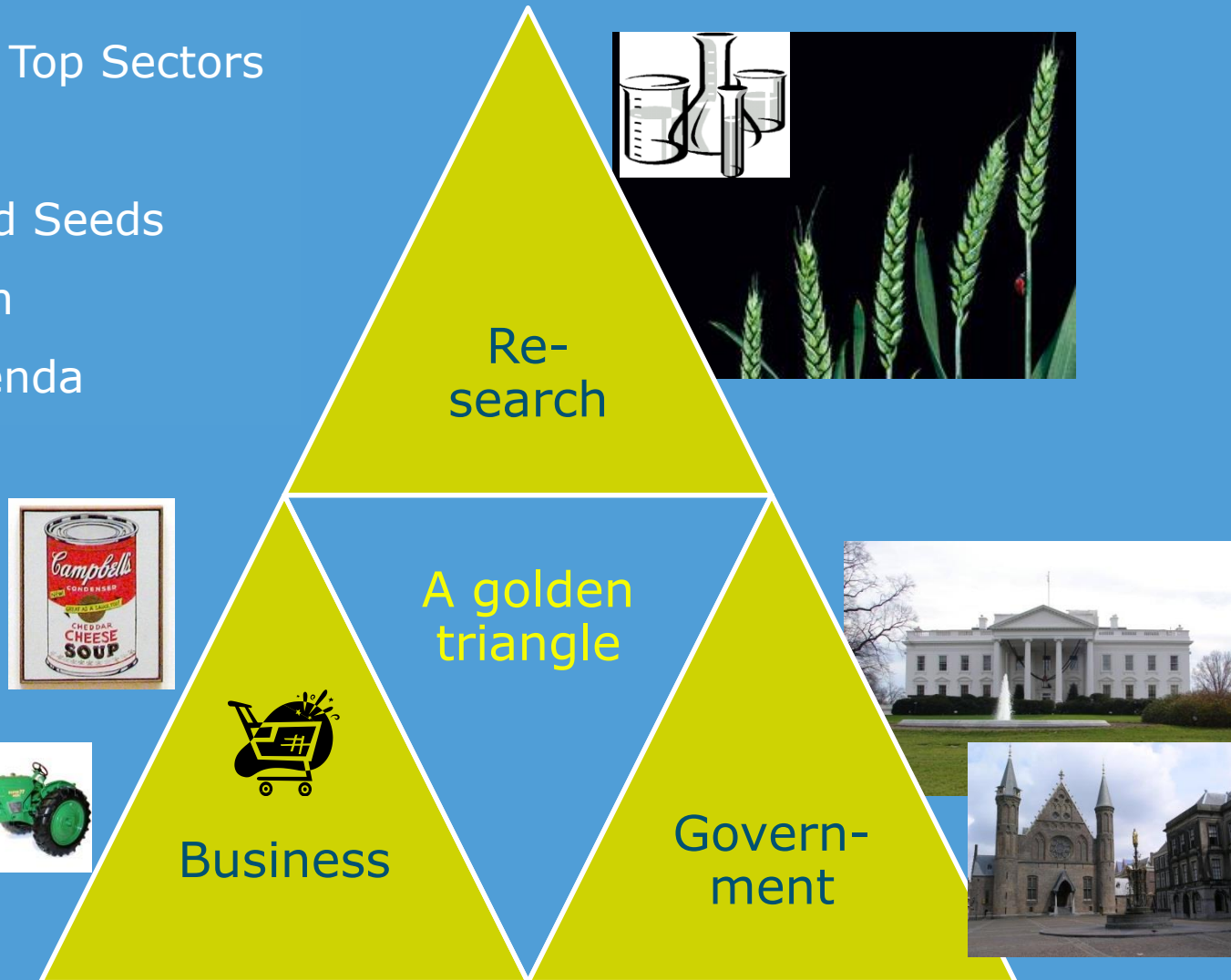




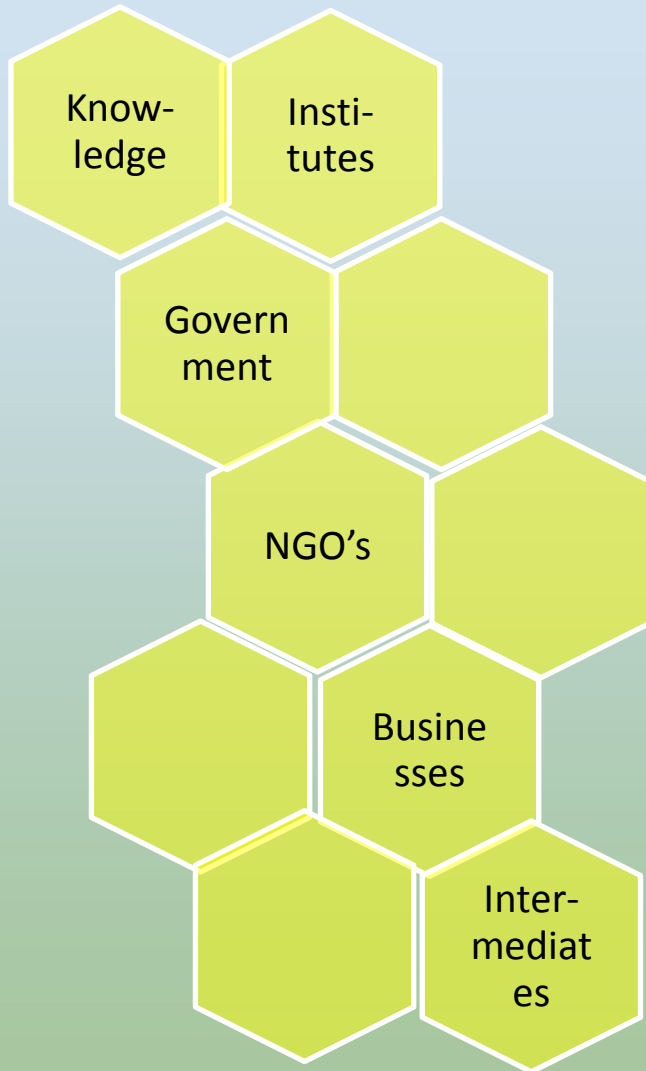
# Public-Private Research partnerships – (‘a golden triangle’ from the polder)

Current policy: 9 Top Sectors

- Agrifood
- Horticulture and Seeds
- > Specialisation
- > Common agenda



# Linking public and private interests



## Linking principles:

- Openness
- Proximity
- Synergy
- Absorption capacity external info

## Connection mechanisms:

- Fora like Knowledge rooms etc.
- Strategic agenda sector
- Strat. Knowledge & Innovation Agenda
- Public-private investments
- Supporting institutional changes

Different objectives,  
methods, and public roles

## Science

- Science driven knowledge development
  - Basic research
  - Linear model
  - Cross overs sectors
  - Society sets agenda
- PUBLIC TASK**

## Market driven R&D

- Science for competitiveness or social issues
- Business sets agenda, helps to steer, uses results
- **PRIVATE-PUBLIC PARTNERSHIPS**

## Innovation in partnership

- Prototypes // Localisation
- Change business models / finance
- Food chain is co-creator
- (De-)regulation, procurement etc.
- **LEARNING AND INNOVATION NETWORKS**
- **INFORMATION BROKERS**