



Thematic working group 5 – Assessment of RDP achievements and impacts in 2019

Jela TVRDONOVA, Evaluation Manager

12th meeting of the Expert Group of Monitoring and
Evaluating the CAP, Brussels 8 February 2018

POWERED BY

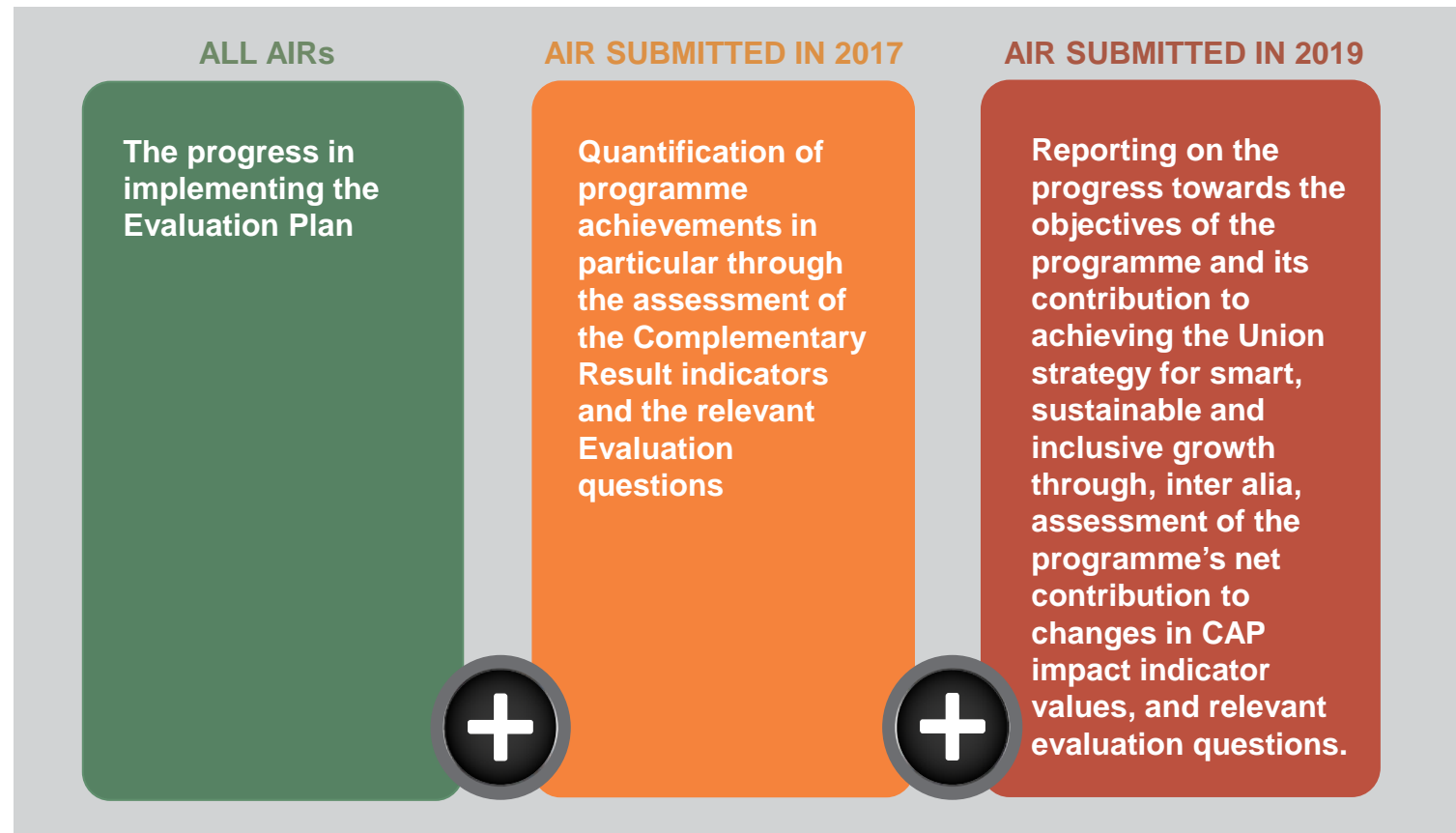




Contents

- Evaluation requirements
- Legal background
- TWG objectives and process
- Challenges
- Structure and content of the guidelines
- Questions for discussion

Evaluation requirements





Legal background (1)

Regulation (EU) No 1303/2013

- Role of evaluation
 - improving the quality of the design and implementation of programmes
 - assessment of programme's effectiveness, efficiency and impact
- Resources and data for evaluation
- Role of evaluation plan

Regulation (EU) No 1306/2013

- performance of the CAP in achieving its common objectives shall be measured and assessed on the basis of common impact indicators, and the underlying specific objectives on the basis of result indicators.
- Based on established FADN Eurostat data

Regulation 1305/2013

- Common Monitoring and Evaluation System (CMES),
- CMES objectives
- Common indicators

Regulation 808/2014

- Art. 14 Common monitoring and evaluation framework
- Annexes – IV, V, VI, and VII

The assessment of the programme's impacts is under the responsibility of each Member State.

Other relevant guidance



For answering CEQ 1 – 21:

- Guidelines: Assessment of RDP Results: how to prepare for reporting on evaluation in 2017
- Target indicator fiches for Pillar II (Priority I and II)
- Complementary result indicators fiches for Pillar II
- Guidelines: Evaluation of LEADER/CLLD
- Guidelines: Evaluation of innovation in RDPs 2014-2020

For answering CEQ 22 – 30:

- Working paper: Common evaluation questions for RDPs 2014-2020
- Impact indicators fiches for Pillar I and II
- Guidelines: Evaluation of innovation in RDPs 2014-2020
- Common context indicators (https://ec.europa.eu/agriculture/cap-indicators/context_en)
- EU 2020 strategy (<http://ec.europa.eu/eurostat/web/europe-2020-indicators/europe-2020-strategy/targets>)

Thematic working group 5



OBJECTIVES

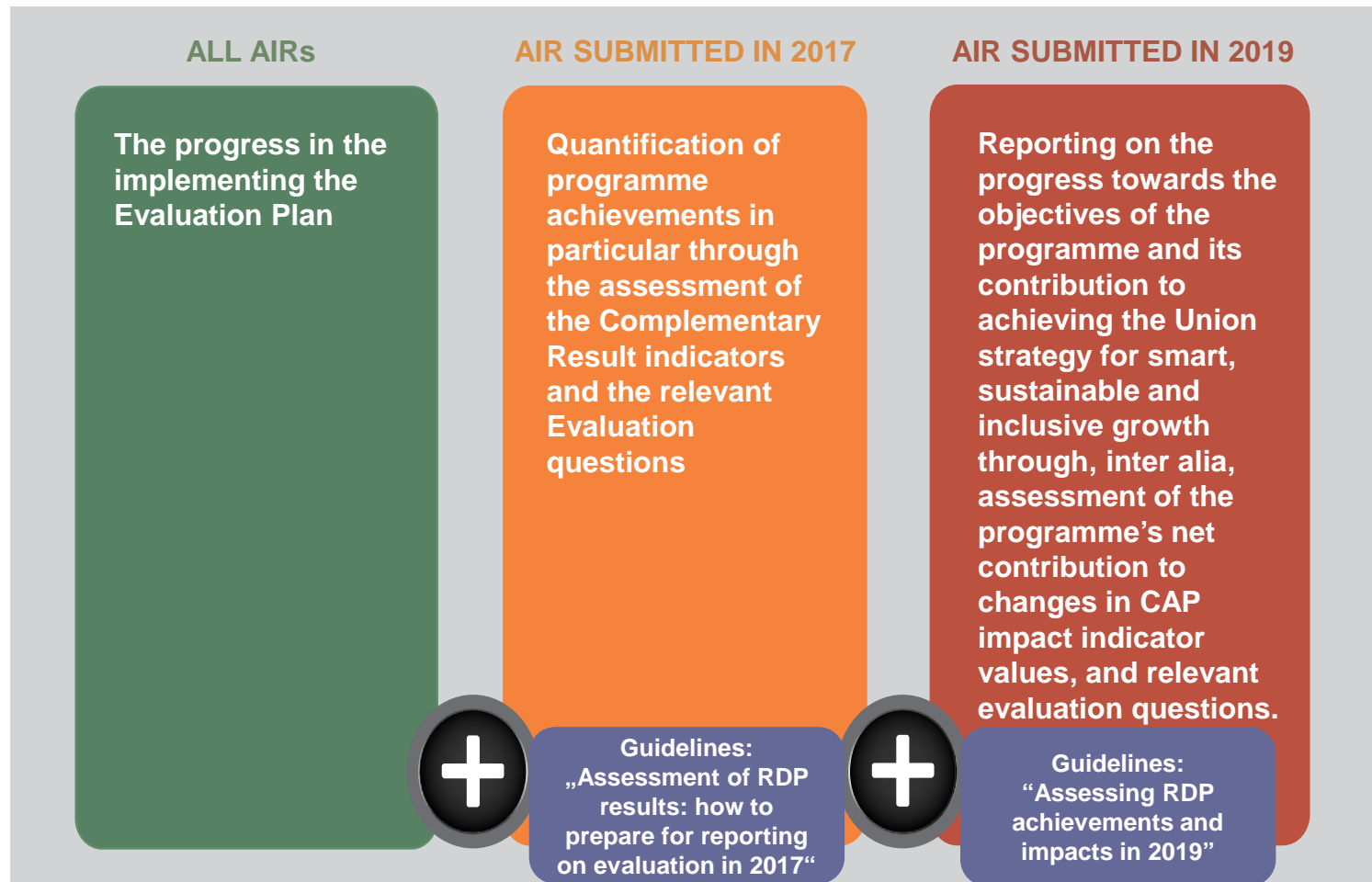
- **Examine the challenges** linked to the evaluation for the AIR in 2019;
- **Present practical evaluation approaches** to
 - assess the RDP net contributions to the common CAP impact indicators
 - Assess the progress in achieving the EU level objectives in 2019
 - answering related common evaluation questions
- **Provide support for reporting** on evaluation findings in the AIR in 2019.

FOR Managing authorities,
Evaluators, DG AGRI...

OUTCOME

Guidelines „Assessing
RDP achievements
and impact in 2019“

Link with guidelines on the assessment of RDP results



Thematic Working Group - process



DRAFTING THE GUIDELINES

Permanent Team of
Evaluation Helpdesk

Core team members

Thematic experts

PEER REVIEWING

DG AGRI
Experts

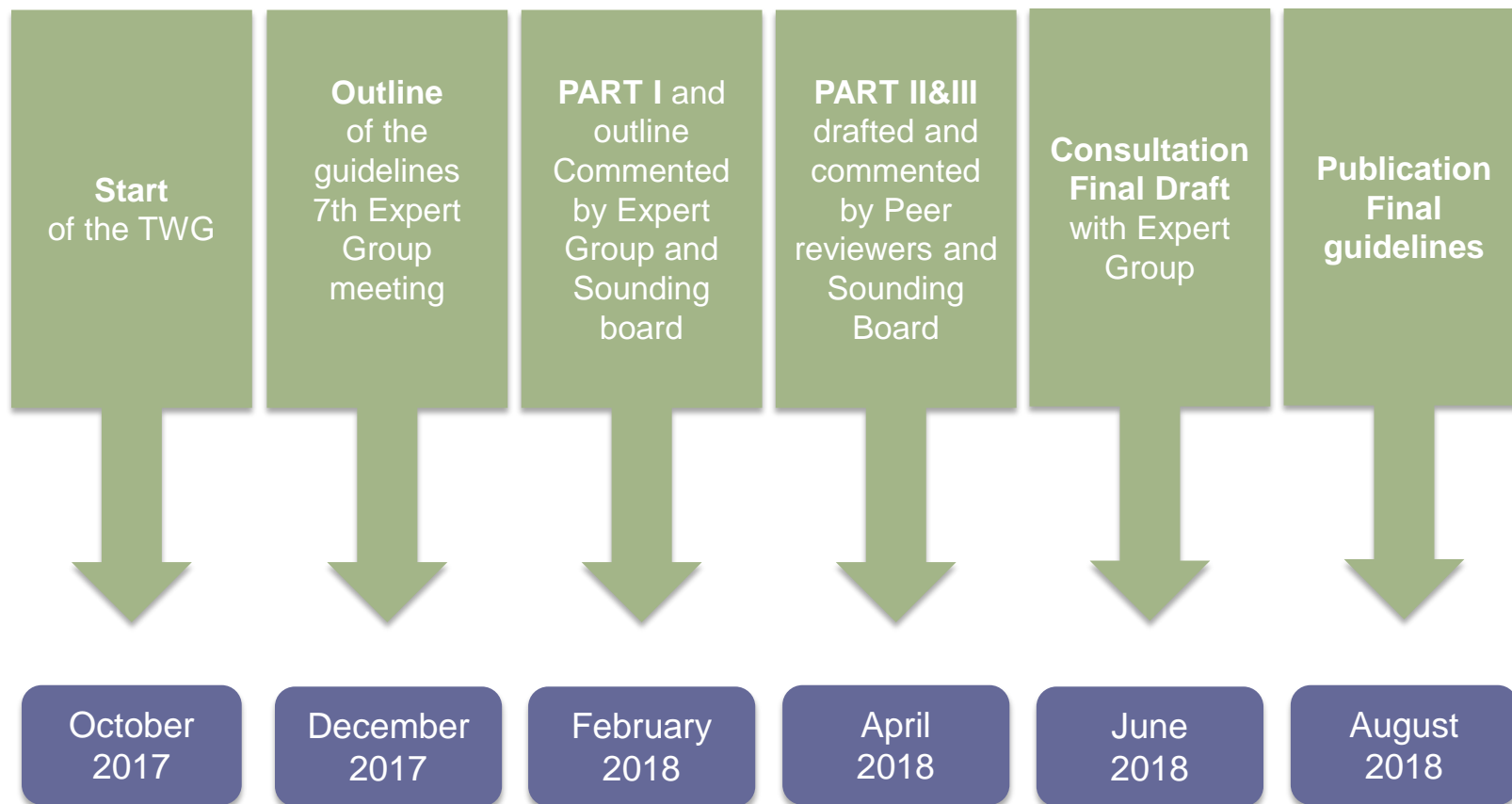
CONSULTING STAKEHOLDERS

EXPERT GROUP ON MONITORING
AND EVALUATING THE CAP

SOUNDING BOARD CONSISTING
OF Expert Group on Monitoring and
Evaluating the CAP
Rural Network Steering Group
ENRD Contact Point
EIP-AGRI Service Point

Thematic Working Group

- milestones



Challenges to be addressed



- What are **optimal and acceptable evaluation approaches** to the evaluation in 2019?
- How to provide **robust answers** to the evaluation questions?
- **What data** is needed? (How to use Pilar II operations database, Pillar I database IACS/LPIS, Eurostat, FSS, FADN, JRC and other EU level databases, National and regional statistics and other data sources (NGOs, research institutes))
- How to **bridge data gaps**?
- **How to report** on evaluation findings in 2019?
- How to **disseminate and follow-up** evaluation findings?



Structure & content of guidelines

PART I

What needs to be reported on evaluation in the AIR in 2019?

Main focus of the evaluation in 2019

Legal framework

How to report on CEQ no. 22 – 30

Other guidance

Check list for MAs

PART II

Approaches for assessing RDP achievements in 2019

Choosing appropriate evaluation methods

Assessment of RDP impacts (Sectorial, Environmental, Socio-economic)

Assessment of RDP contributions towards the EU2020 and innovation

PART III

Fiches for answering the CEQ no. 22 – 30

ANNEXES

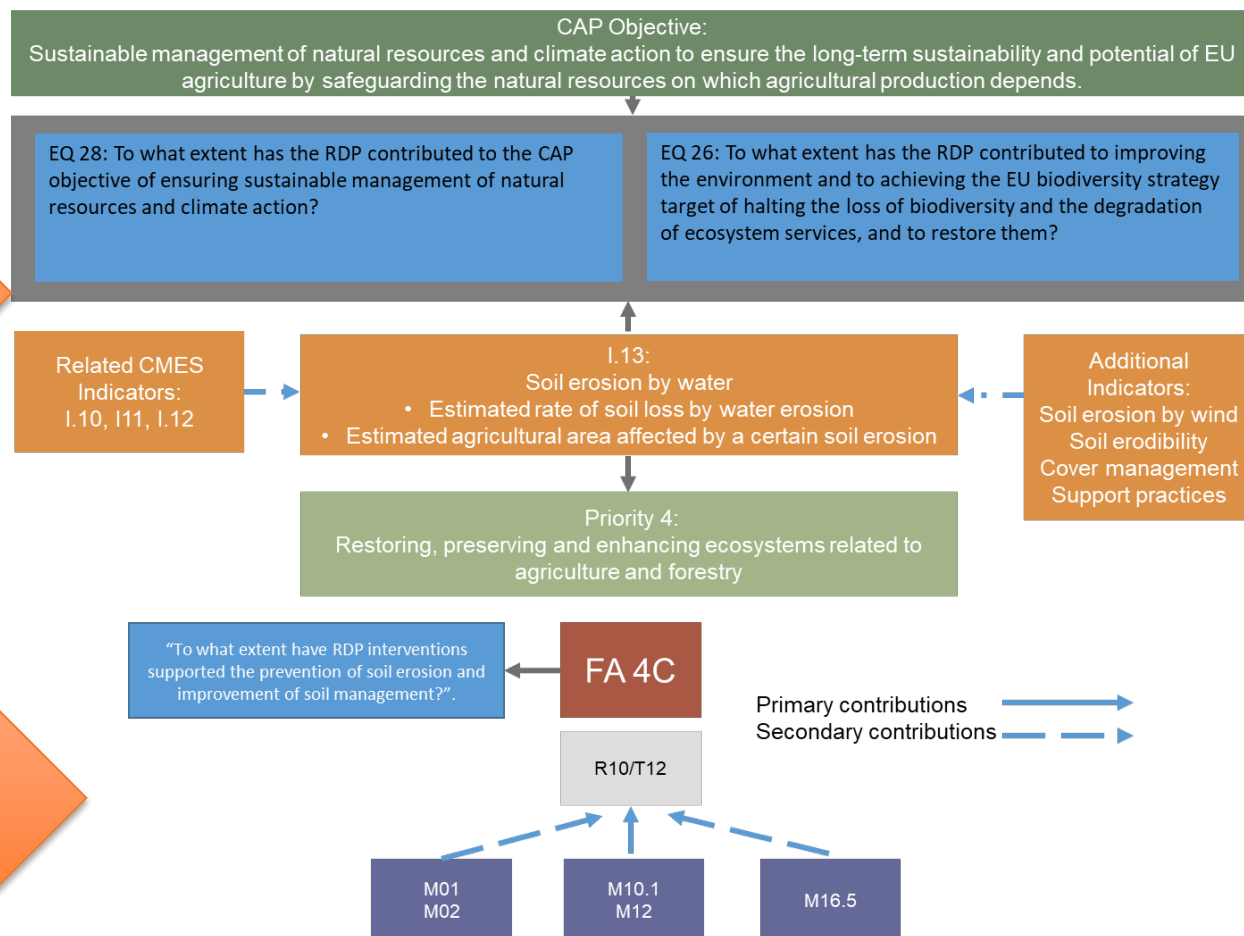
Glossary
SFC template

Others



1. Explaining
intervention logic for
the impact indicators

2. Selecting additional
indicators, if needed



PART II

Approaches for
assessing RDP
achievements in 2019

(under development)



3. Defining the unit of analysis

4. Choosing evaluation approaches: Optimal/acceptable in 2019

5. Optimal evaluation approach at micro/macro level

6. Acceptable evaluation approach at micro/macro level

7. Complying with evaluation standards

For each of approaches and levels:

- Assessment of data quality & creation of consistent databases
- Selection of counterfactual design
- Net assessment of impacts

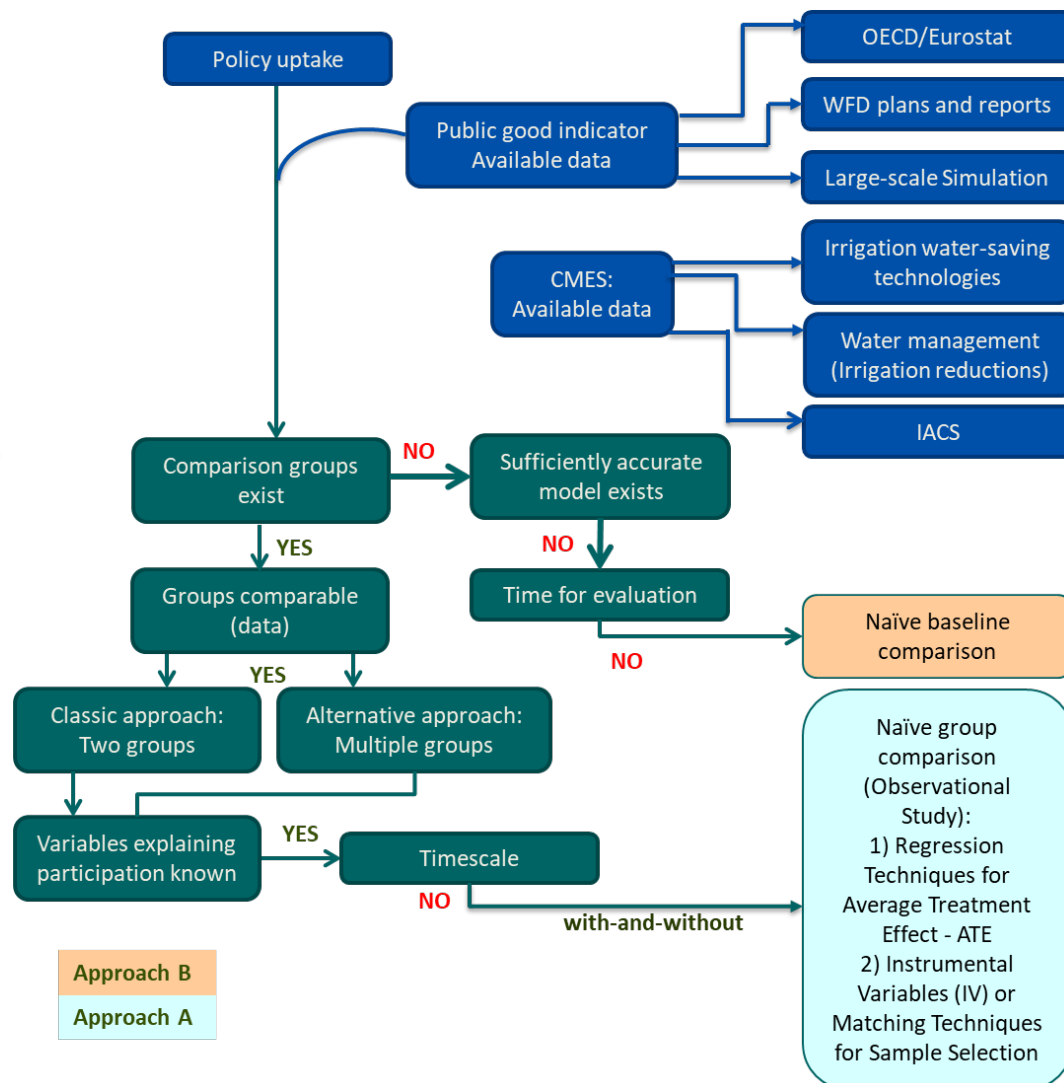
PART II

Approaches for
assessing RDP
achievements in 2019

(under development)



Example of logic
model for choosing
appropriate
evaluation
approaches





Questions for discussion

1. What are your **major concerns** in relation to the assessment of RDP results and impacts in 2019?
2. Is there any **particular issue to be addressed** in the guidelines for the evaluation in 2019?



Thank you for your attention!

European Evaluation Helpdesk for Rural Development

Boulevard Saint Michel 77-79

B-1040 Brussels

Tel. +32 2 7375130

E-mail info@ruralevaluation.eu

<http://enrd.ec.europa.eu/evaluation>

Follow us on



ENRD_EVALUATION