



Tecnologia satellitare
integrata alla Blockchain
per la certificazione delle
produzioni agroalimentari

cooevo

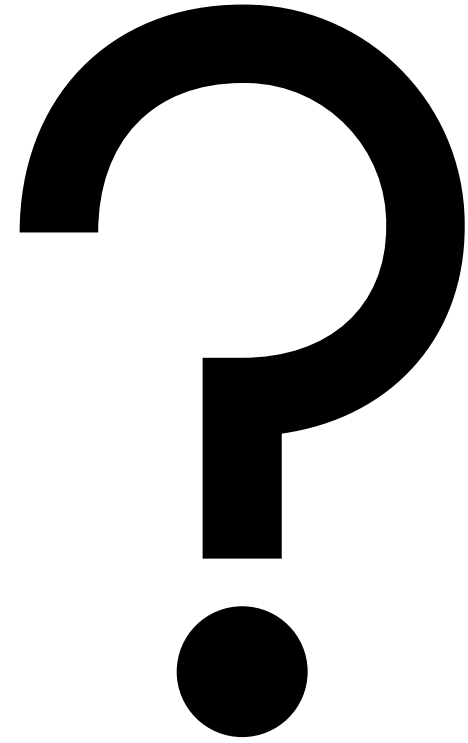


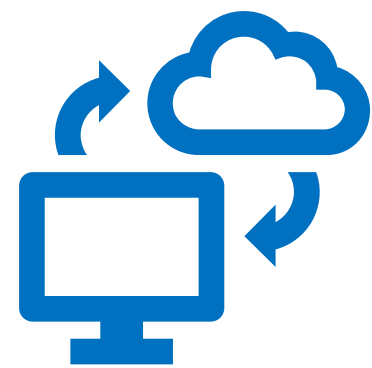
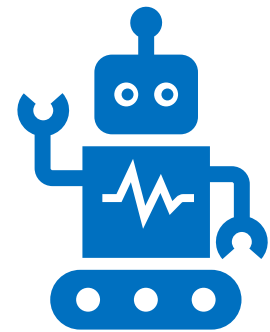
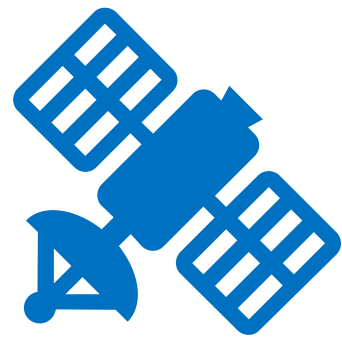
cooevo

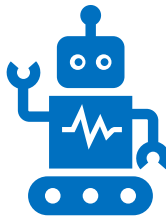
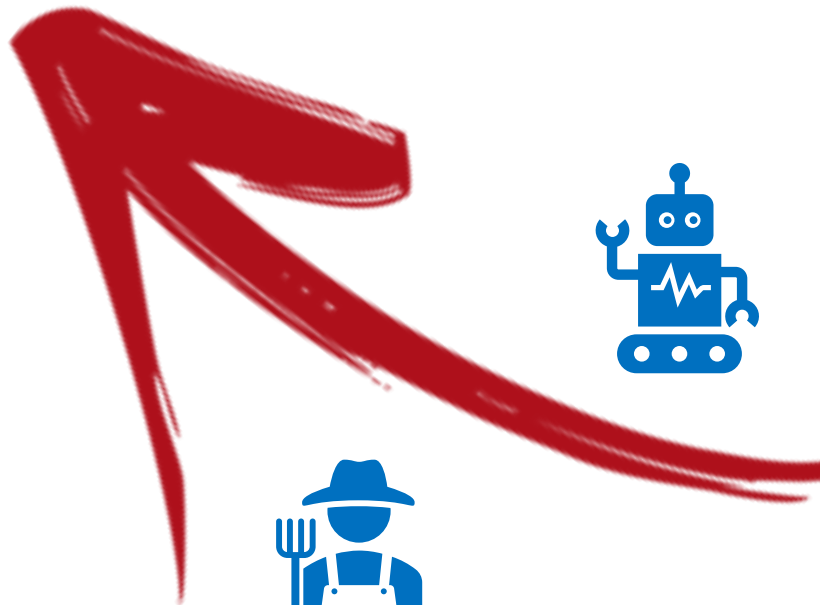
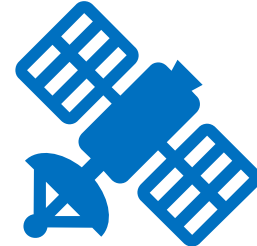
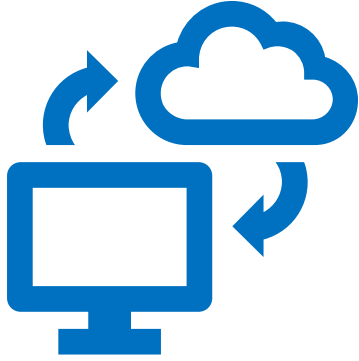
COOPERAZIONE È EVOLUZIONE

Dott. Gianmarco Piramo

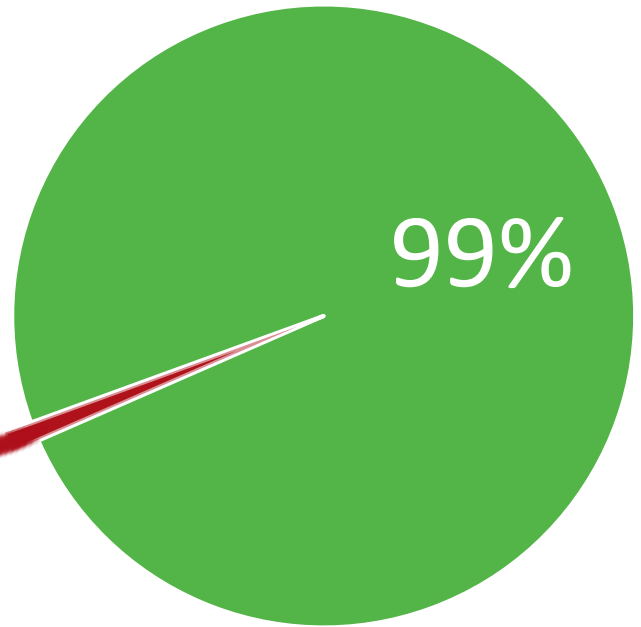
www.cooevo.com

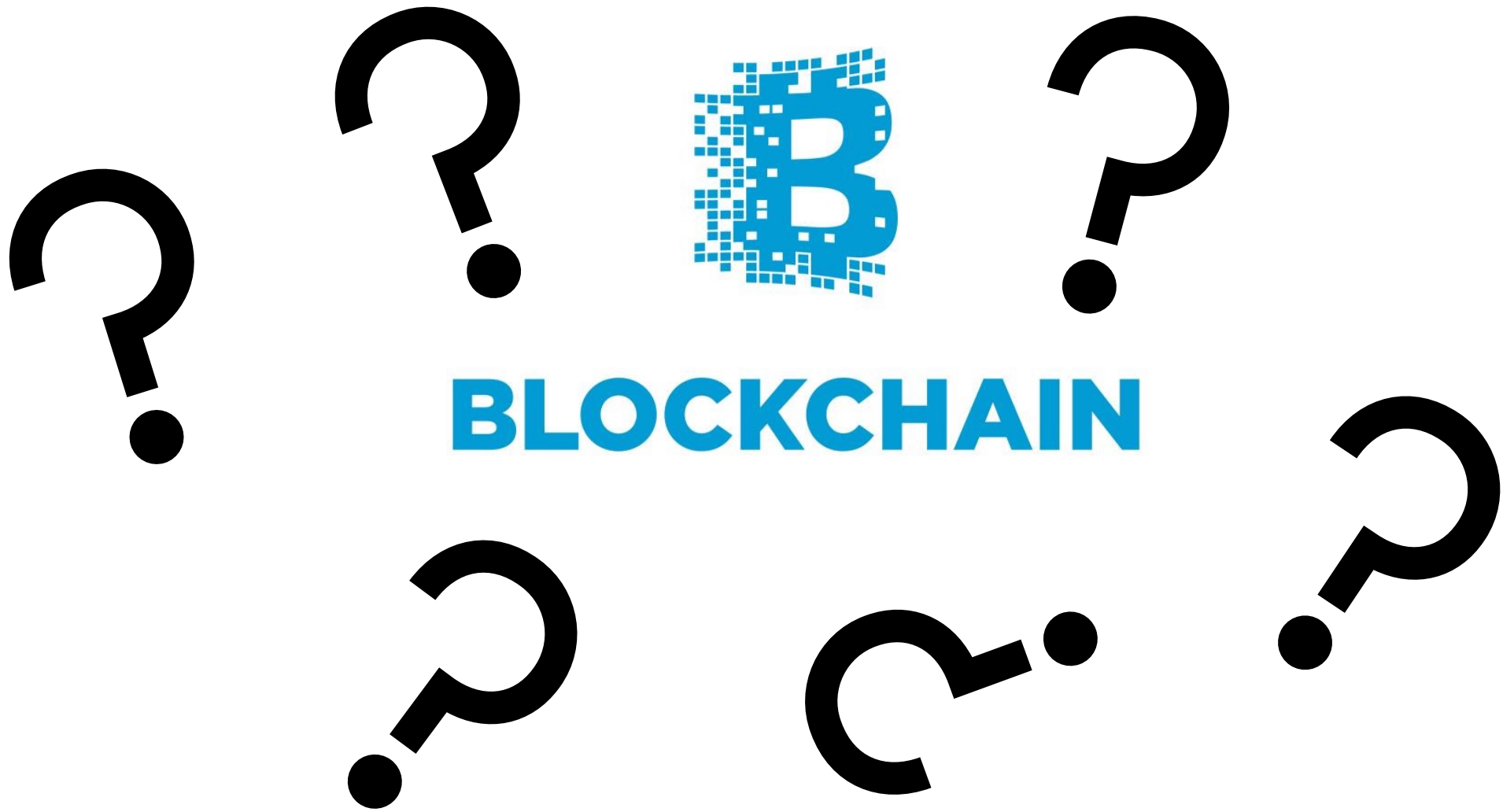






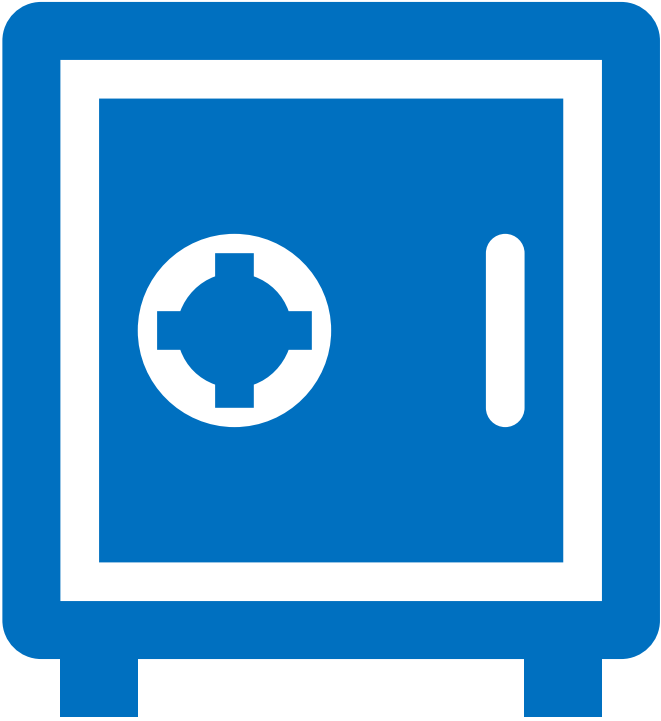
Aziende Agricole





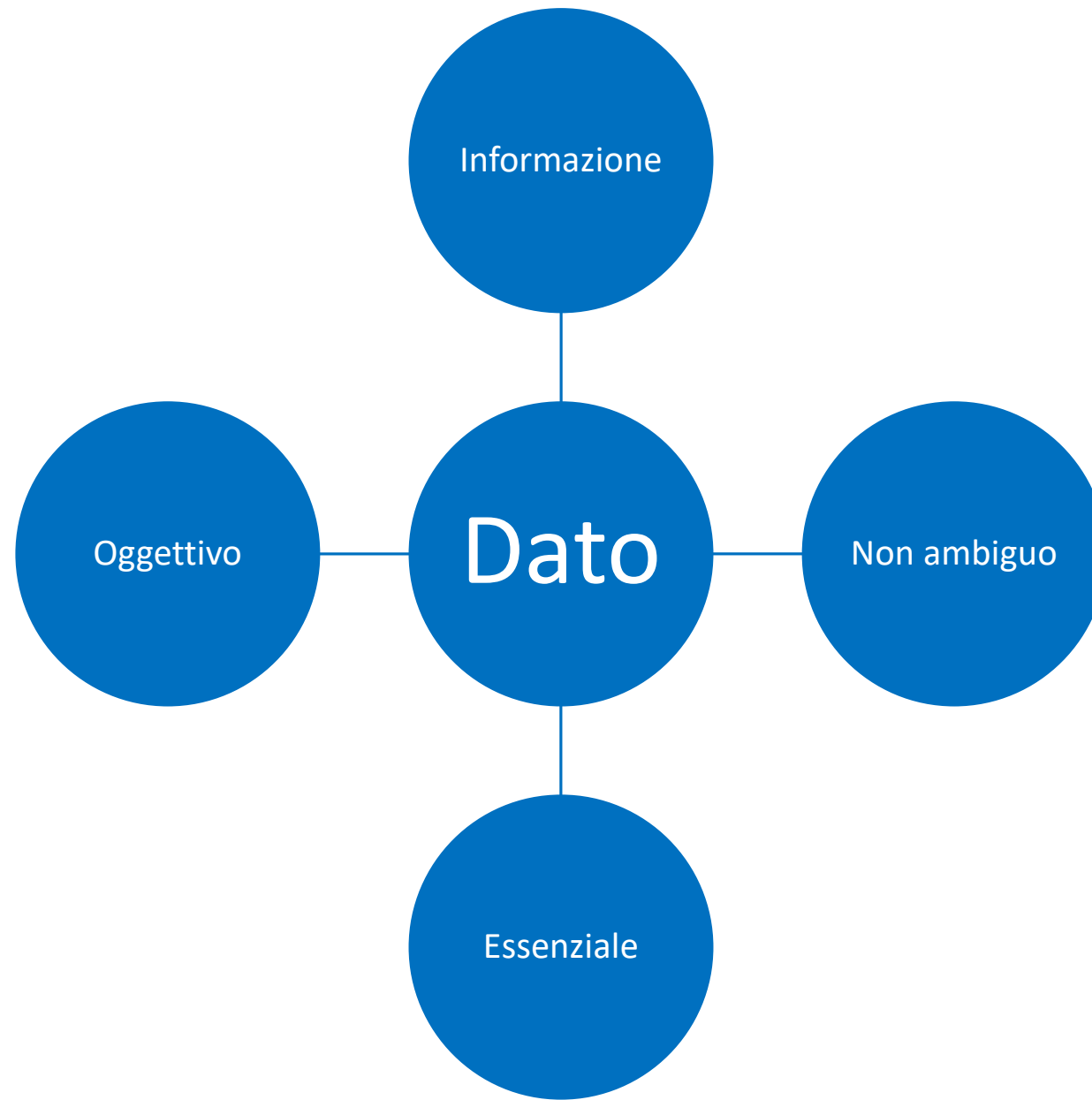


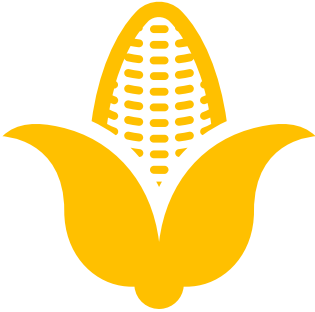
La Blockchain garantisce la persistenza di un dato



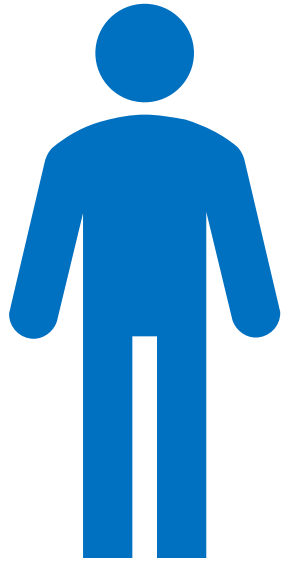


Ma cosa è un dato?





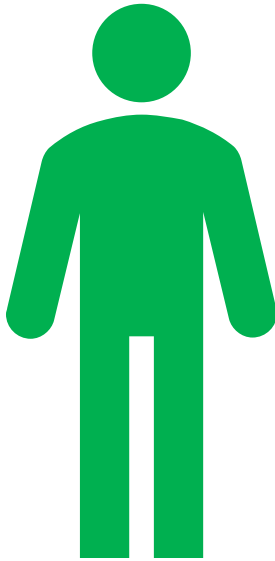
100Kg

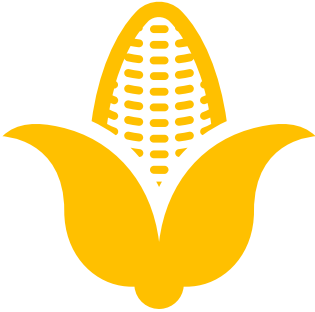


97Kg

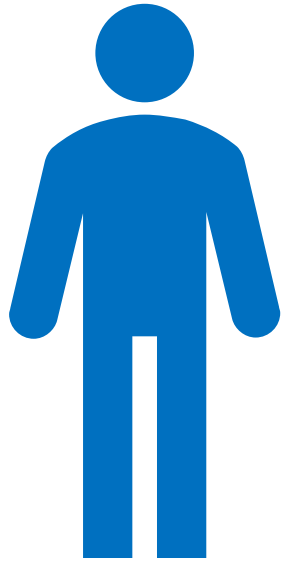


105Kg





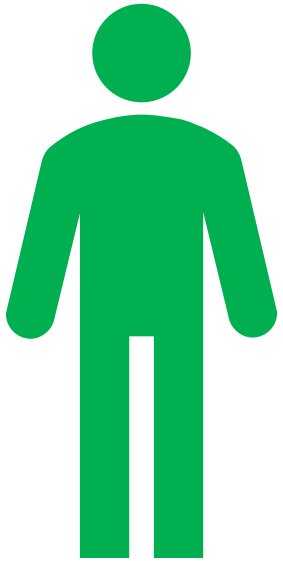
100Kg

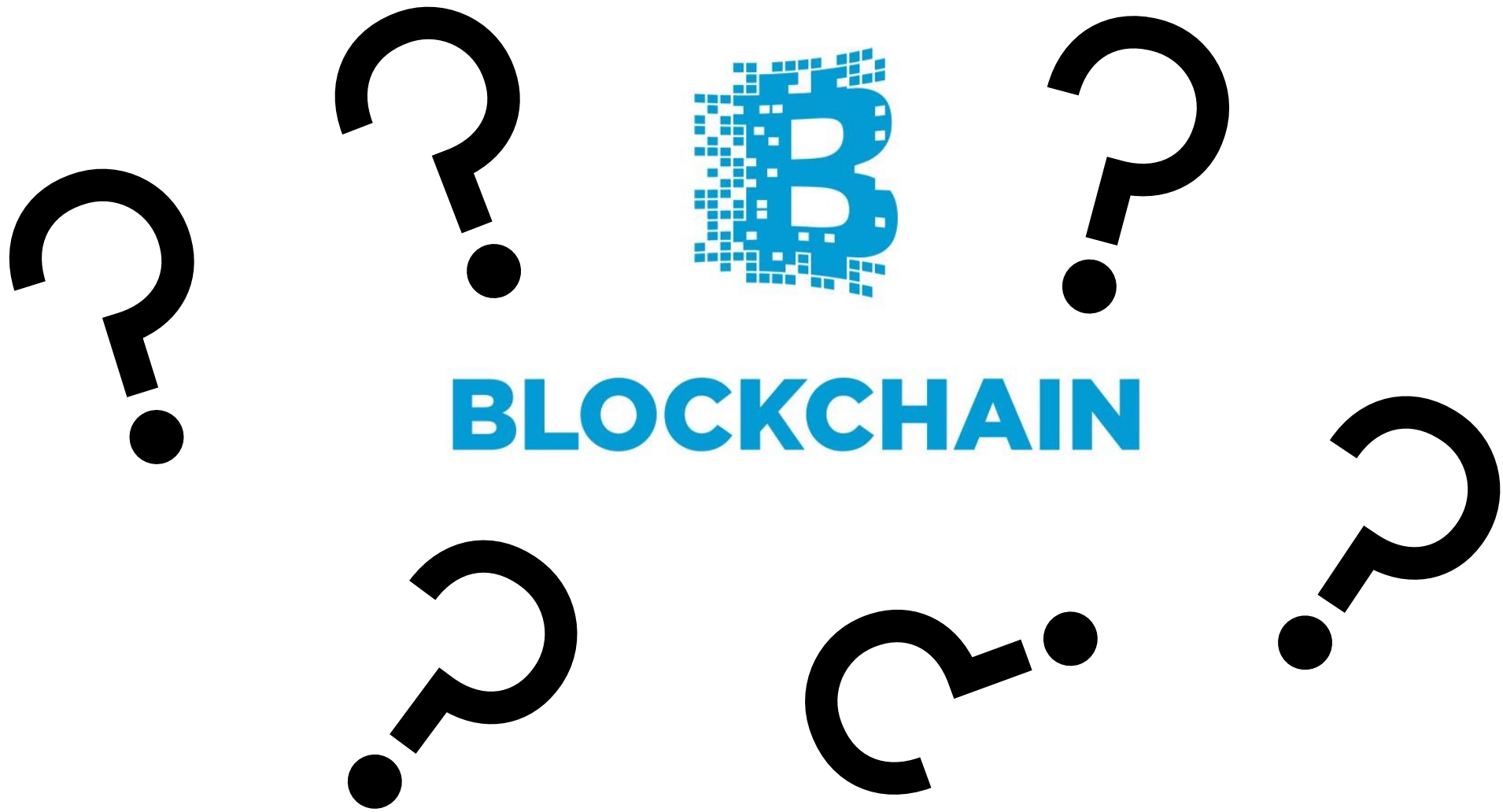


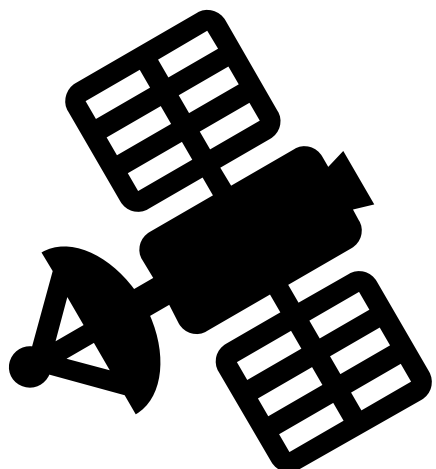
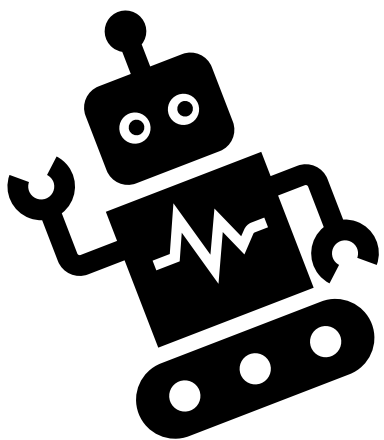
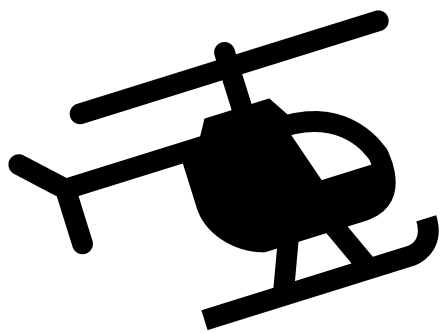
100Kg



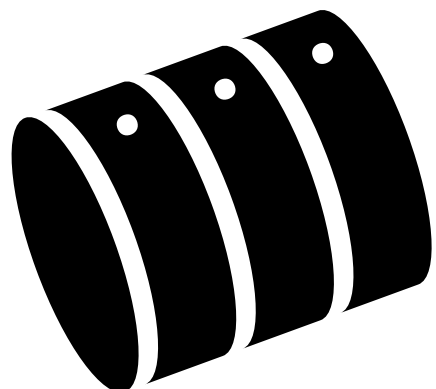
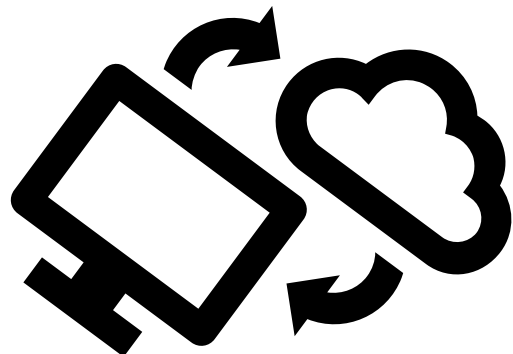
100Kg







BLOCKCHAIN







cooevo

COOPERAZIONE È EVOLUZIONE

Grazie per l'attenzione

Dott. Gianmarco Piramo

www.cooevo.com