



# gLOCAL

EVALUATION WEEK  
2022



# WEBINAR “DEFINING A PEOPLE-CENTERED MEANINGFUL EVALUATION FRAMEWORK FOR THE ASSESSMENT OF ADVISORY PERFORMANCES”

3<sup>RD</sup> JUNE 2022

## Background

The Italian NRN is pleased to invite you to the online webinar “Defining a people-centered meaningful evaluation framework for the assessment of advisory performances” that will be held on 3rd June 2022 (11 am -12.30 am CEST).

Designing M&E of Rural Advisory Services (RAS) is a rather complex task since its potential end-users and purposes are numerous and all of them have different stakes and needs and as well play a role in service provision and its performance.

Also, the subject under M&E processes is complex since the quality of a service provision depends and relies on three less predictable variables: i) the availability of knowledge of the advisor, in terms of competencies, skills and abilities; ii) the capacity of the advisor to perform the service; iii) the capacity of the clients to access and use the advisory services.

The implementation of evaluation to RAS implies the systematic collection of information about the activities, characteristics and outcomes of certain advisory services to make judgments on their quality, in view of improving the provision and enable advisors increasing the respective capacity and ability to perform good quality services. As well, the implementation of monitoring processes to RAS provision relates to the efficient management of the provided services, that helps on going-adjustments with respect to quality targets, through on-going collection of crucial information on contents, methods and tools in use, types of served farmers/clients, modalities of service provision.

## Objectives

This panel session aims at presenting and discussing an evaluation framework of the RAS that has been developed based on the views and expectations of local advisory services with the purpose of helping self-assessments of performances and their better integration within agricultural knowledge and innovation systems.

This will allow broadening the evidence base and use of data of M&E practitioners through deepening the knowledge about meanings and performances of advisory service along with understanding of policy interventions.

Questions will be proposed to the participants to prompt lessons and reflections on how to “build forward better” by using evaluation evidence and with adaptive and responsive evaluation practice with people-centered and adaptive evaluations.

What does it mean assessing advisory performances? Which assessment criteria should be used as they are meaningful for advisors? Which evidence from monitoring and evaluation count for advisors for a better assessment of their performances?

## Target Audience

The webinar will be an opportunity to bring together evaluation stakeholders like academics, government officials, non-profit organizers, policymakers/parliamentarians, evaluation practitioners, students, evaluation practitioners and other evaluation experts and researchers at a global level, both in the private and public sectors.

### SPEAKERS :

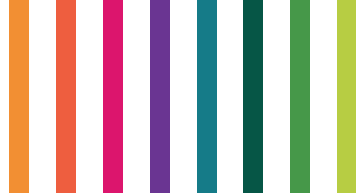
SIMONA CRISTIANO AND PATRIZIA PROIETTI (CREA - COUNCIL FOR AGRICULTURAL RESEARCH AND ECONOMICS, ITALY)

### DISCUSSANTS:

CARMELA PECORA (CONAF - NATIONAL COUNCIL FOR AGRONOMISTS AND PROFESSIONAL FORESTERS ORDER) ABOUT THE IMPORTANCE OF A PERFORMANCE ASSESSMENT TOOLS IN THE CONTEXT OF THE GAP AND PUBLIC POLICIES

LASZLO GABOR PAPOCSI (GAK EDUCATION AND OPERATION NONPROFIT LTD) ABOUT THE UTILITY AND USE OF TAILORED PERFORMANCE ASSESSMENT TOOL OF ADVISORY SERVICES

[Click here to register](#)



National Rural Network  
Ministry of Agricultural, Food and Forestry Policies  
Rome, Italy

f    RETERURALE.IT

If you have any questions, please contact: [retevalutazione@crea.gov.it](mailto:retevalutazione@crea.gov.it)

**Workshop organization:** Simona Cristiano, Valentina Carta, Francesca Varia,  
Alberto Sturla and Patrizia Proietti

**Graphic:** Francesco Ambrosini

**Networking:** Giuseppina Crisponi, Anna Lapoli, Roberta Ruberto, Mario Cariello

The events are performed within the  
Italian National Rural Network  
Project activity 4.2  
“Monitoring & Evaluation”

Events realized with the contribution of the EAFRD (European Agricultural Fund for Rural Development)  
in the context of the Italian National Rural Network Programme 2014-2020.

