



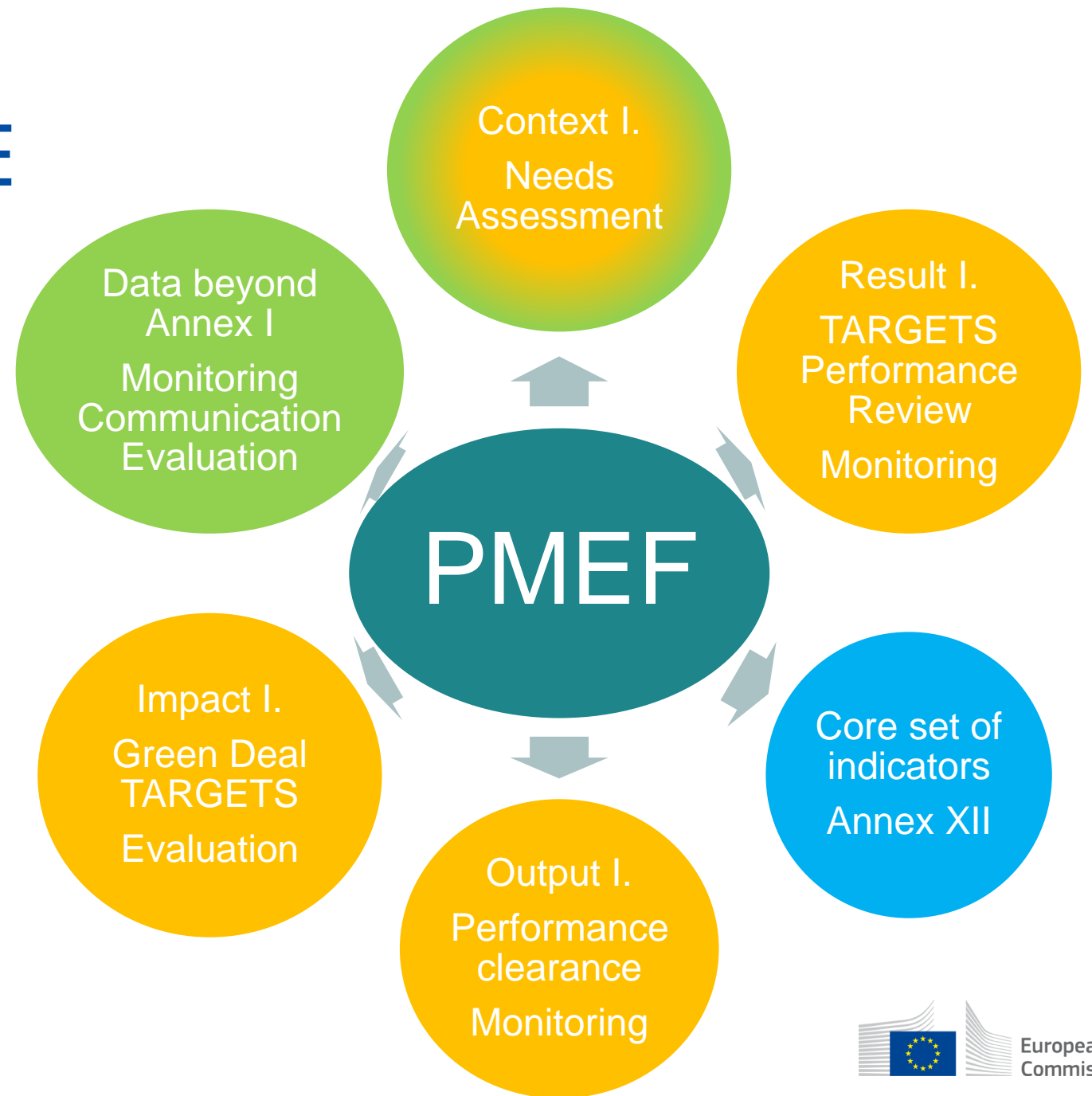
PMEF

# Data needs for evaluation and monitoring

Sophie H elaine, Unit C4

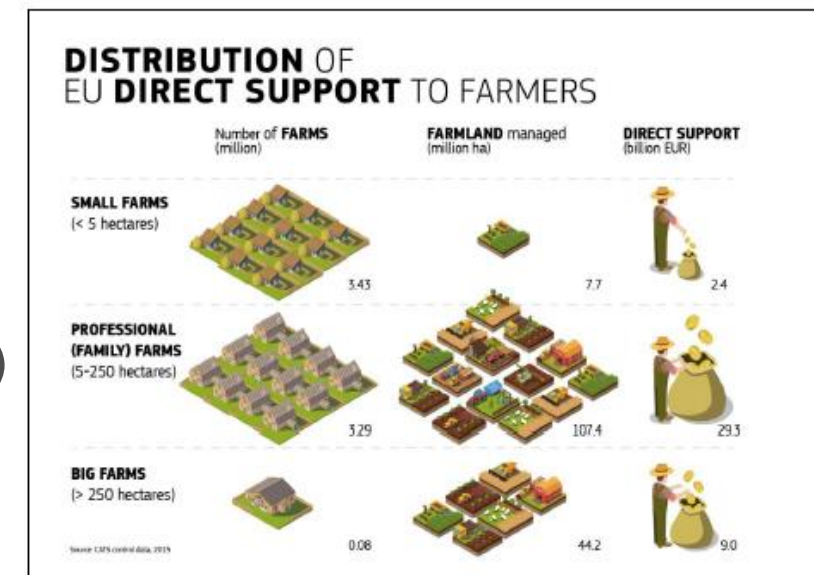
*25 November 2020*

# The PERFORMANCE Monitoring and Evaluation Framework



# The needs for additional data

- A result-oriented policy implies a greater focus on **evidence** and **data!**
- Framework of the European strategy for data – **data sharing**
- Annex I indicators do not provide all the necessary details for a complete monitoring and evaluation of the CAP implementation, for example for:
  - Sectoral programmes, LEADER
  - Data for indicators at lower geographical level (e.g. to measure environmental and climate impact)
  - Distribution analysis of CAP payments by beneficiary (I.24)
  - Information to perform good evaluations and future impact assessments



# Legal basis

- **Article 129**: MS shall provide COM with all necessary information enabling it to perform the **monitoring and evaluation** of the CAP.
- **Article 136**: COM, in collaboration with MS, shall establish an information system to enable the secure exchange of data of common interest.
- Which data MS will have to send in accordance with article 129 will be laid down and discussed in the framework of adoption implementing act.

# Main principles

- Data **already available** in MS or to be introduced in operational databases (and IACS) to fill-in the APR
- Data at **beneficiary/payment application**, mimicking as close as possible MS operational database and current data flow systems
- Any data collected beyond Annex I would **not be certified**, however the data system will be certified.
- It is proposed to collect the data by **claim (calendar) year** as it is the most useful for analysis. By contrast, the APR is reported by financial year.
- **No reconciliation** of the additional data collection is intended or even possible with the APR

# Scope of the additional data to be collected

- Individual data on **claims** (amount and number of units paid)
  - With geographical information for monitoring ENV/CLIMA requirements (geographical information on environmental practices implemented with CAP support)
  - With link to specific objective (link to Strategic Plan)
  - With information on the investment type or the sector the intervention contributes to (e.g. energy savings, pesticides, animal welfare..)
- Data on **beneficiaries**: zoning (e.g. Nitrates Vulnerable Zones) and characteristics (young Y/N, organic farmer Y/N) and area under GAEC
- Data on implementation of **EIP** by Operational groups + Reporting on implementation **operational/sectoral programmes** (at aggregated level) (continuation of the current reporting+)

# Next steps

- We will share with you more detailed tables describing our need, with our understanding of the information already available in IACS or for CATS at the next GREXE
- We will then send you a questionnaire on:
  - the data readily available in paying agencies
  - the data you planned to add to fulfil APR reporting
  - the difficult variables
  - possible timing for the data delivery
- We will open the March GREXE to Paying Agencies to discuss together the feasibility (in terms of content and data exchange).