

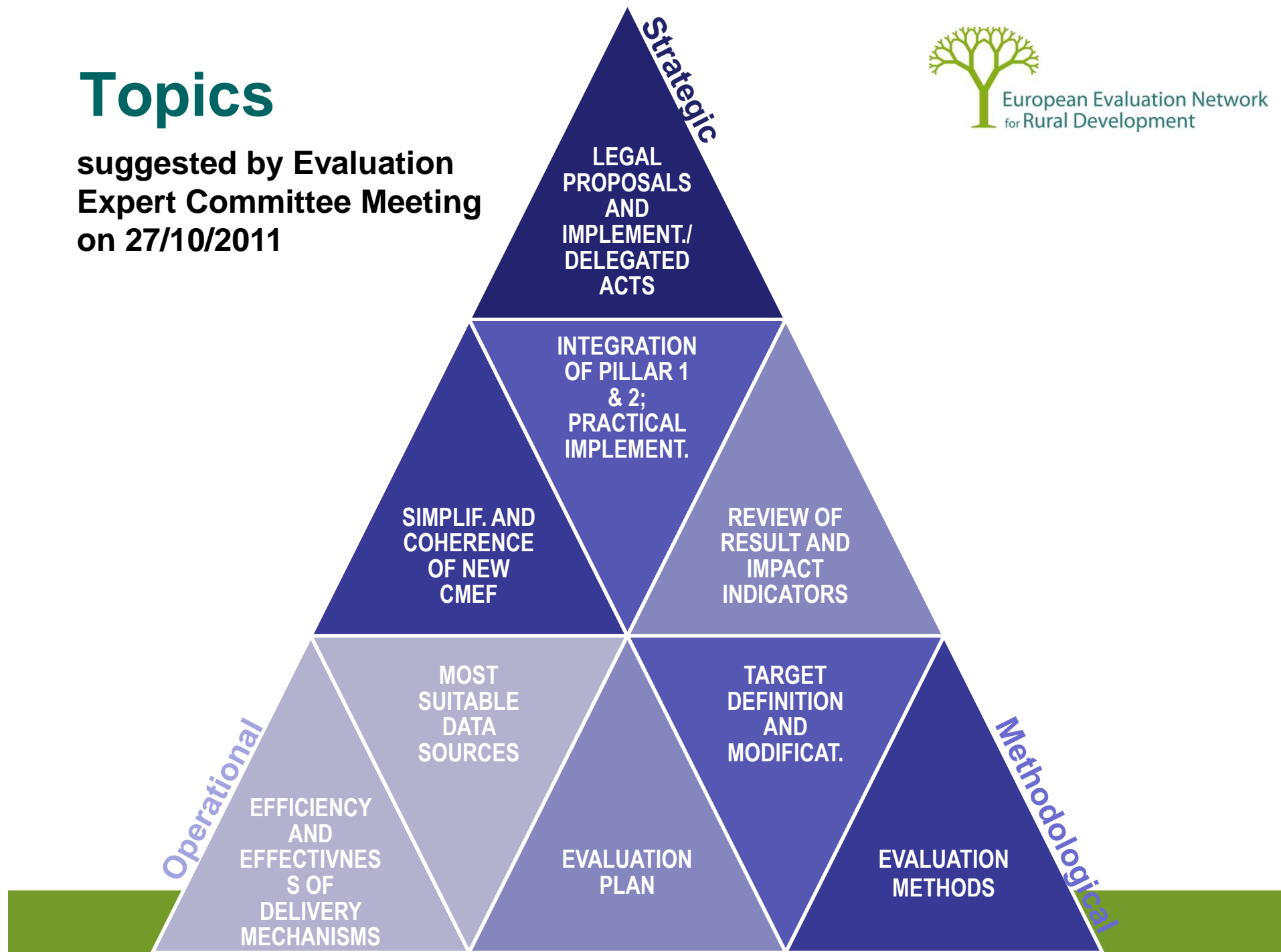
Thematic Working Group

Topics

suggested by Evaluation
Expert Committee Meeting
on 27/10/2011



European Evaluation Network
for Rural Development



Topics – who deals with what?

Legal
proposals

- Council (and its Working Groups)

MS
input

Implementing
/ delegated
acts

- Appropriate committees for rural development (RDC)
- New expert groups
- EC internal Task Force on M&E and WGs

MS
input

Topics – who deals with what?

Simplification
and
coherence of
new CMEF

- Horizontal issue
- to be considered in all discussions (e.g. indicators)

MS
input

Topics – who deals with what?

Integration of
Pillar 1 and 2
(practical
implementation)

- New expert group for the Horizontal Regulation and its subgroups (e.g. ISAMM, Simplification)
- EC-internal Task Force working group on Pillar 1&2

MS
input

Topics – who deals with what?

Review of result and impact indicators

- Joint meeting of ExCo & ENRD CC on 14-15 March (intervention logic + indicators for RD)
- CAP level impact indicators in Horizontal Reg. expert group
- Specific discussions (e.g. in ExCo) envisaged
- EC internal CMEF review group + Pillar 1&2 WG, Helpdesk involvement

MS
input

MS
input

MS
input

Topics – who deals with what?

Efficiency
and
effectiveness
of delivery
mechanisms

- Thematic Working Group of ENRD (→ Final Report on ENRD website)

MS
input

Topics – who deals with what?

Most suitable
data sources

- Expert group for Horizontal Questions and its subgroups (ISAMM, Accountancy Network)
- Twice yearly meetings with directors of PAs
- Annual IT seminar with SF
- HD TWG on ex-ante
- EC internal Task Force working group on data/IT issues

MS
input

MS
input

MS
input

MS
input

Topics – who deals with what?

Evaluation Plan

- Workshop of the Evaluation Network for RD
- EC internal CMEF review working group

MS
input

Target definition and modification

- HD TWG on ex-ante
- EC internal CMEF review WG

MS
input

Topics – who deals with what?

Methodolog.
issues

- HD TWG on ex-ante
- HD Good Practice Workshops

MS
input

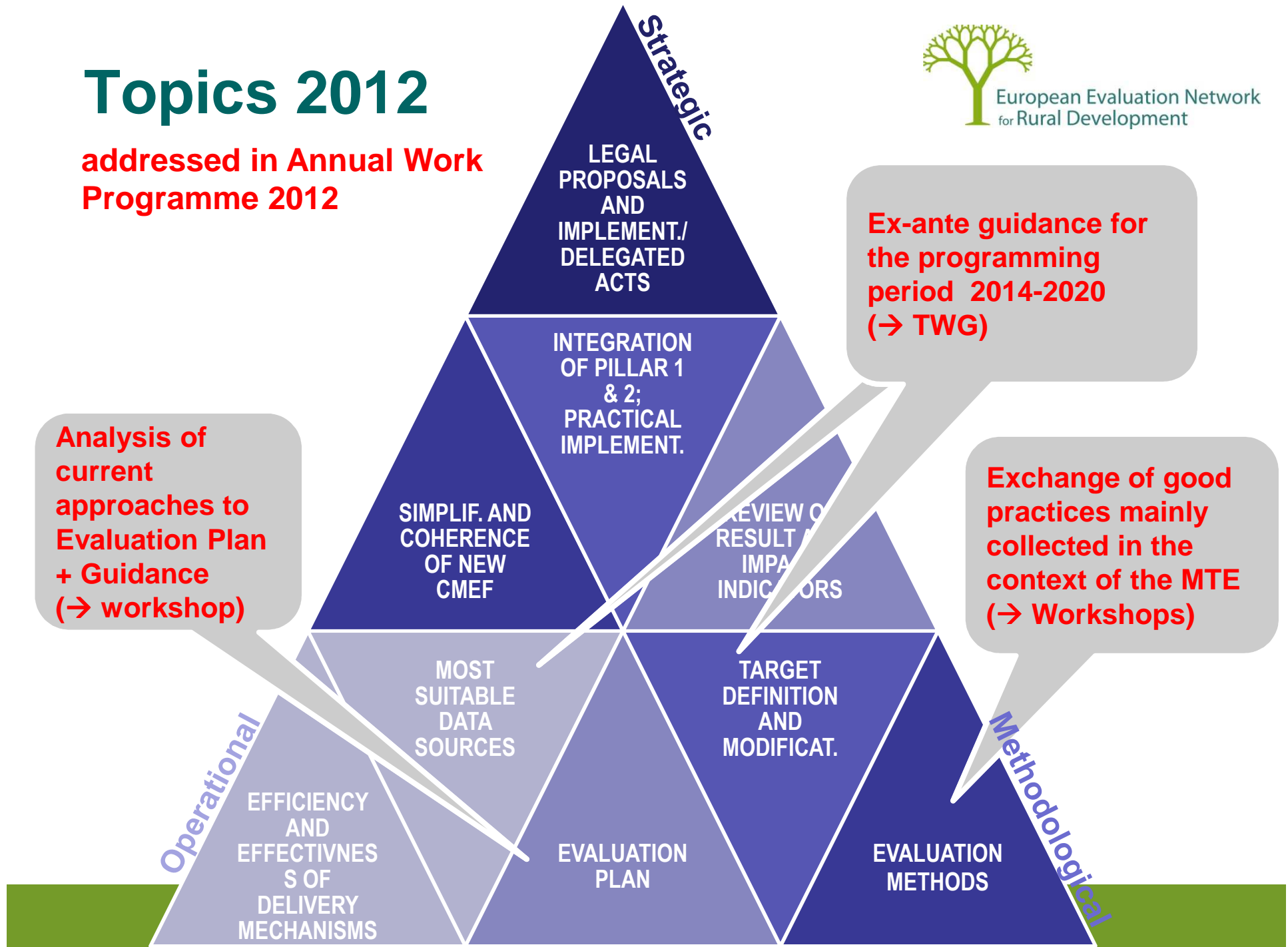
MS
input

Topics 2012

addressed in Annual Work Programme 2012



European Evaluation Network
for Rural Development



New activity: TWG Ex-ante

Objective

- provide methodological back-stopping for preparation of the CMEF post-2013
- Draft background documents to be used for the M&E framework

Focus

- Ex-ante guidance, ToR

Method:

- Series of ad-hoc workshops hosted, organized and facilitated Helpdesk

Indicative timeplan – TGW

Ex-ante



Date	Topic	Output
WS 1 Feb.	<ul style="list-style-type: none">• Kick-off of Thematic Working Group	<ul style="list-style-type: none">• Workplan• WS minutes
WS 2 March	<ul style="list-style-type: none">• To be defined	<ul style="list-style-type: none">• Interim deliverable 1
WS 3 April	<ul style="list-style-type: none">• To be defined	<ul style="list-style-type: none">• WS minutes
WS 4 May	<ul style="list-style-type: none">• To be defined	<ul style="list-style-type: none">• Interim deliverable 2
WS	<ul style="list-style-type: none">• To be defined	<ul style="list-style-type: none">• Guidance document



Annual Work Programme 2012

Main challenges in 2012

- 1. Follow-up the main lessons learnt from MTE**
- 2. Prepare the post 2013-period in terms of M&E**
- 3. Sharing evaluation practices and methods**

Activities 2012 – What's new?

Content development

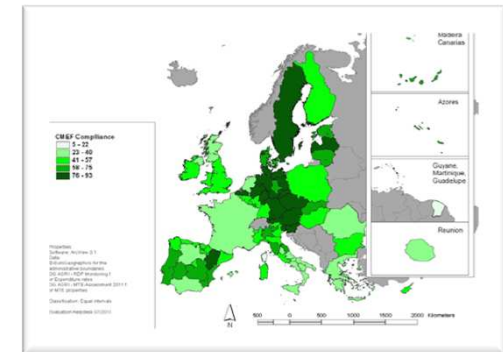
- Thematic work: (NRNPs, ongoing evaluation) + **Thematic Working Group**
- Support to the CMEF review
- Update Needs Assessment (**Focus Groups with stronger EC involvement**)
- Good Practices (**collected through workshops**)

Technical support services & tools

- Assessment of Annual Progress Reports for 2011
- Annual Work Programme
- Mailing list, filing system

Dissemination & information & networking

- FAQs & technical questions, glossary
- Update of Website & e-library
- Newsletter
- Missions to the Member States (**complete all MS**)



New activity: Good Practice Workshops

Objective

- provide forum for know-how exchange
- discuss approaches and practices applied

Potential topics

- related to evaluation methods and processes

Method:

- workshop hosted by MS organization
- Co-organized and facilitated by Evaluation Helpdesk

Fixed Workshops:

- Evaluation of National Rural Network Programmes (Brussels, 7 Feb.)

Suggested Workshops:

- Ex-ante guidance
- High Nature Value Indicator
- Evaluation of investment measures
- Evaluation Plan
- Others topics?

Indicative timeplan – Good Practice Workshops



Date	Topic	Output
------	-------	--------

7 Feb.
Brussels

Evaluation of National Rural Network Programmes

- Draft WP

15 Feb.
Brussels

Drafting ToR (→ ex-ante)

- WS minutes
- Input for TWG

15 March
(UK?)

High Nature Value Indicator (tbc)

- WS minutes

April (?)

Ongoing Evaluation (tbc)

- WS minutes
- Input for TWG

May
(Finland?)

Evaluation of National Rural Networks (tbc)

- WS minutes
- Input for TWG

Focus Groups 2012

Objective

- Strengthen link between evaluation stakeholders
- joint work on evaluation-related issues.

Potential topics

- To be defined with ExCo members

Method:

- Interactive workshop, co-organized between Evaluation Helpdesk & MA
- Invite the Desk Officers



Missions to the MS

Objective

- Complete missions in 2012
- Follow-up recommendations of MTE on M&E

Planned Missions 2012

- Hungary (25/01/2012); Bulgaria (Q1 2012), United Kingdom (Q2 2012), Ireland (Q3 2012), Italy (Q4 2012), France (Q4 2012)

Method

- Interactive 1 day workshop



Timeplan

