

Rural Development Programme for Greece 2007-2013 On going evaluation activities

EVALUATION PLAN 2012

**Programming and Evaluation Unit
Managing Authority for Greek RDP**

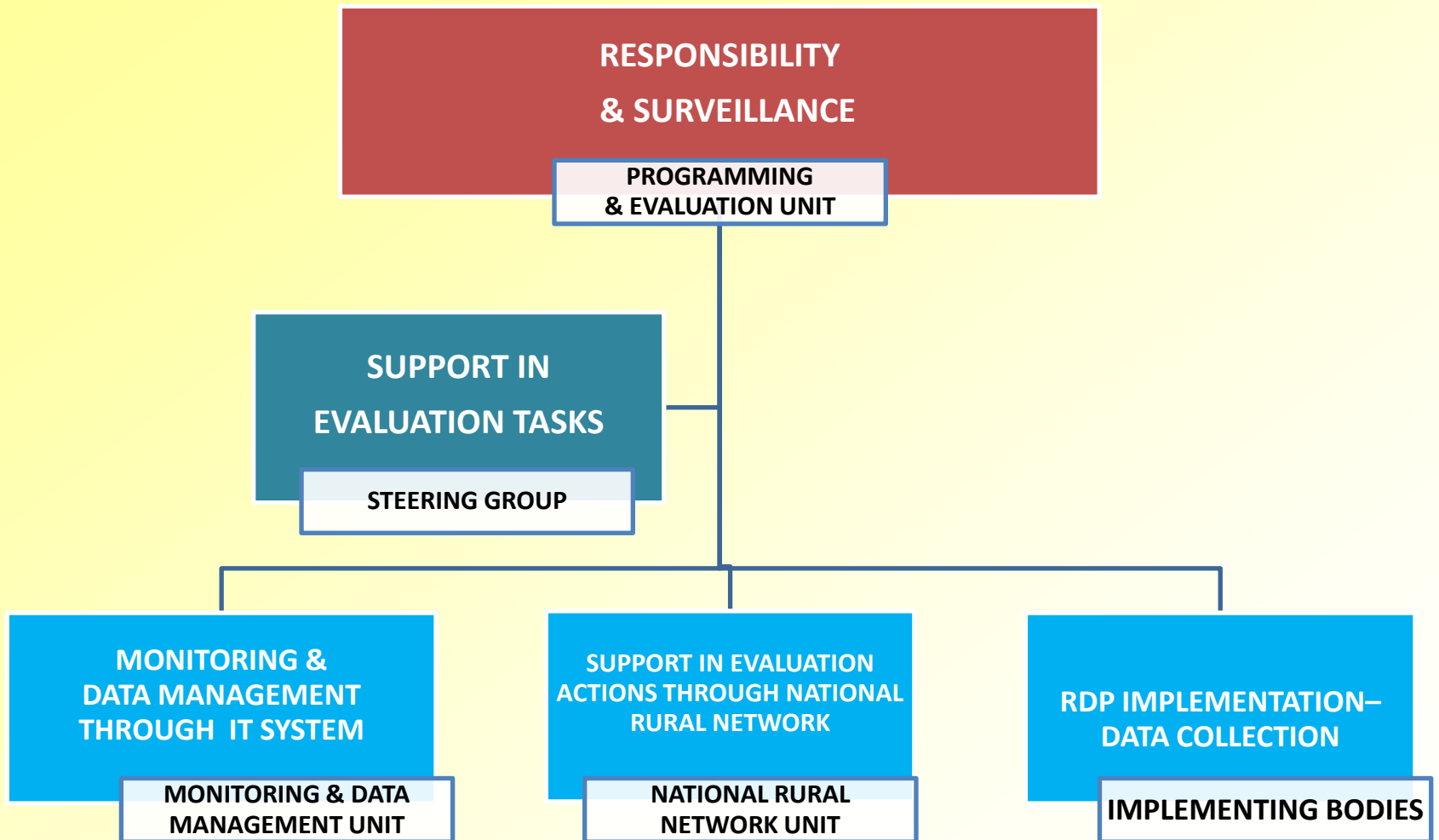
Alkistis Liatsikou, Athens, 6.6.2012

Contents

- **On going evaluation system**
- **Impact assessment methodologies**
- **Steering Group**
- **Evaluation Plan 2012**



ON GOING EVALUATION SYSTEM



IMPACT ASSESSMENT METHODOLOGIES

Call for tenders for three expert studies – one per thematic evaluation section (Competitiveness – Differentiation, Environment, Quality of life-Leader)

- Development of impact/result assessment methodologies, counterfactual assessment
- Evaluation of existing data collection systems
- Proposals for improving evaluation methods
- Methodology development for answering Common Evaluation Questions
- Proposals for case studies, thematic studies or fieldworks
- Intervention logic review
- Proposals for increasing capacity building
- Proposals for better networking of the stakeholders



STEERING GROUP

- **Steering Group was reestablished**
(officers of Managing Authority, Implementing Bodies, Paying Agency, LAGs and if appropriate experts, academics and even beneficiaries)
- **Regular meetings**
- **Active participation**
- **Member consistency and stability**



EVALUATION PLAN 2012

➤ **Technical Meetings with Implementing Bodies**

- Focus on solving the problems of collecting and recording data
- Further exploit the data and evaluate the first results so as to be prepared for the ex-post evaluation
- Constant cooperation with the consultants of three expert studies



EVALUATION PLAN 2012

➤ **Constant information and dissemination of best practices and methods to the stakeholders**

- Manual for monitoring indicators per measure
- Focus groups presentations and outcomes
- Working papers from technical meetings with Implementing Bodies
- Working papers and presentations from technical meetings with other Member States
- Presentations and reports from other conferences, meetings



EVALUATION PLAN 2012

➤ Data management and collection activities

- Check of monitoring data of IT system (OPSAA) at project level or at application for support level.
- Check of reports for the aggregation of data at measure level or at intervention area level or at region level.



EVALUATION PLAN 2012

➤ **Capacity building**

- Record training needs in evaluation issues (via steering group, technical meetings, questionnaires)
- Training for evaluation methods and tools
- Seminars per thematic evaluation aspect for increased capacity building



EVALUATION PLAN 2012

➤ Networking

- Contacts with other MS and organize workshops jointly
- Enhance the cooperation with the National Rural Network in Italy
- Cooperation with the MA of Cyprus in thematic evaluation aspects due to common features of the primary sector
- Cooperation with the National Monitoring and Evaluation Network of Agrarian Structure and Rural Development of Germany for the future of CMEF



**Thank you for your
attention**

