

# The role of delegated, intermediate regional bodies Swedish RDP

Niclas Purfürst

Head of Department for Rural Development at  
the Swedish Board of Agriculture



## Country and rural profile

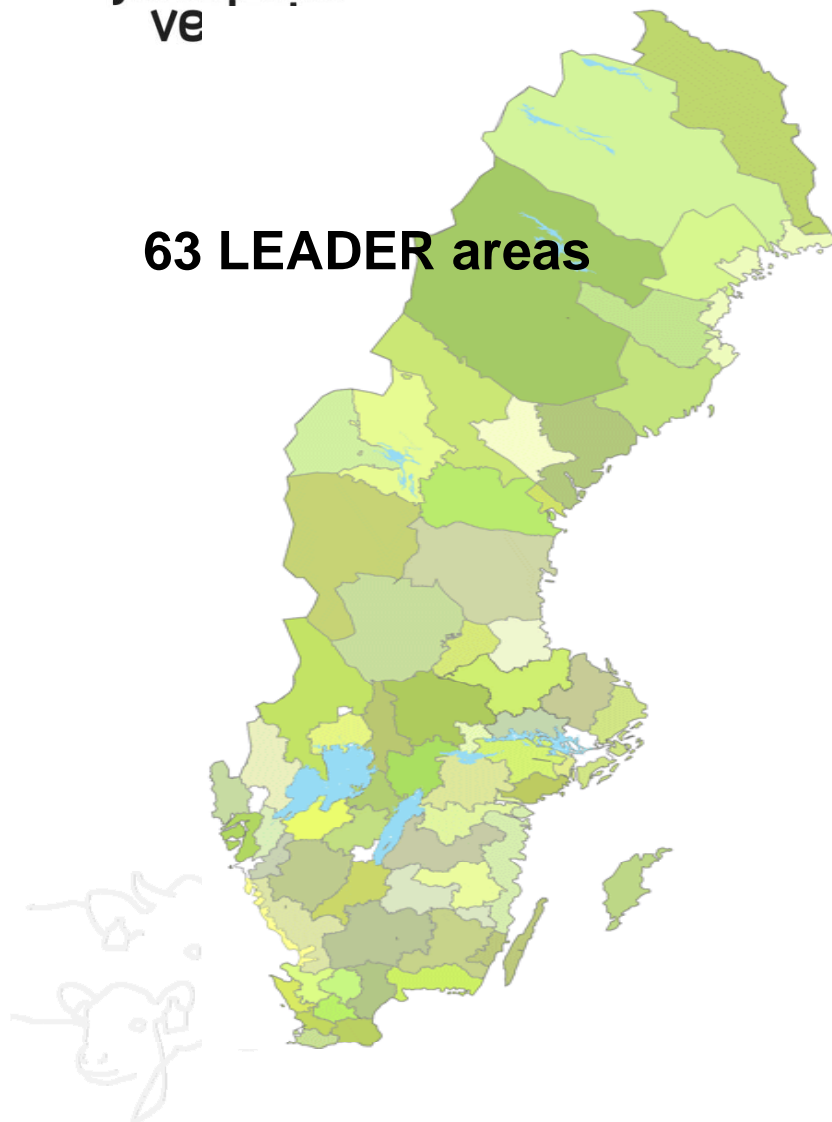
- Total size 450.000 km<sup>2</sup>
- Length almost 1.600 km
- Population 9 million
- average 22 inhabitants/km<sup>2</sup>
- 70 % live in rural areas (OECD definition)



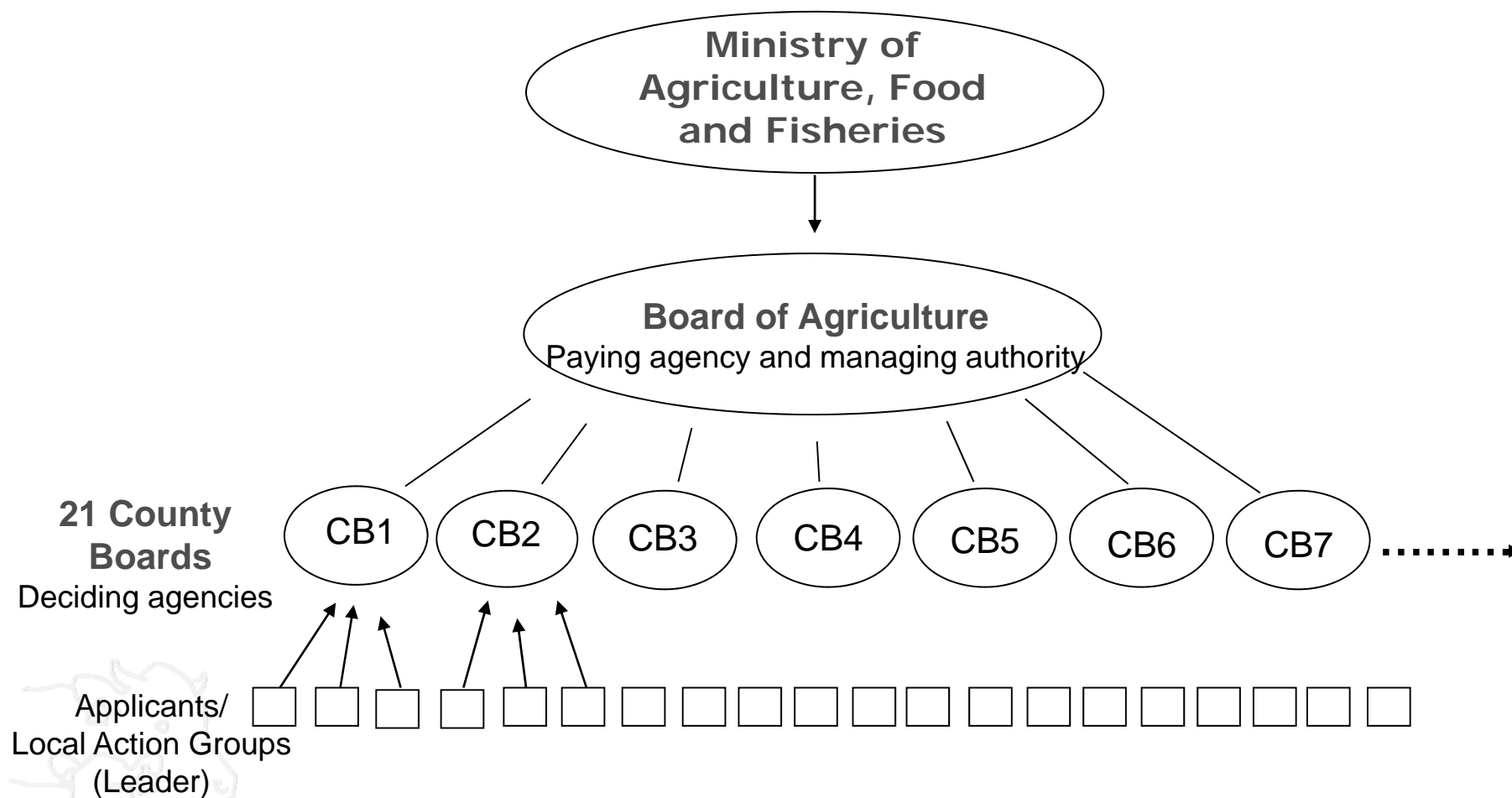
# Map of LEADER areas in Sweden

- 21 Counties

63 LEADER areas



# Organisation in Sweden



# Why decentralised management?

- *Large rural areas with different rural conditions*
- *County administrative boards (21) in place*
- *Historically the counties have had the main responsibility for rural development*
- *Improved coordination with regional policy measures and structural funds – increased synergies and decreased risk of overlap and double financing*
- *Handling of CAP support has been delegated to the County administrative boards since 1995*
- *Agreement on one RDP but with regional flexibility*



## How does it work?

- *The role of the County administrative boards established in the RDP and in national regulation*
- *All counties establish an implementing strategy*
- *Strategies planned in partnership*
- *The Board of Agriculture coordinates, guides and finally approves strategies*
- *Training and instructions*
- *Information*



# Implementation strategy

- SWOT-analysis
- Priority-list and selection criteria
- Budget
- Choice of measures (axis 2)
- Coordination with other funds
- Partnership
- Information
- Training
- How the strategy contributes to the national strategy as well as horizontal objectives in the RDP



# Lessons learned

- EU-regulations designed for regional RDPs not for regional flexibility within a national RDP
- Partnership takes time to get working well
- Some counties are not as used to strategic planning of rural development measures
- A large number of budget categories/posts difficult to coordinate on a national level
- Monitoring and follow-up on a national level needs to take into account differences in strategy
- Some stakeholders do not want different priorities between counties

