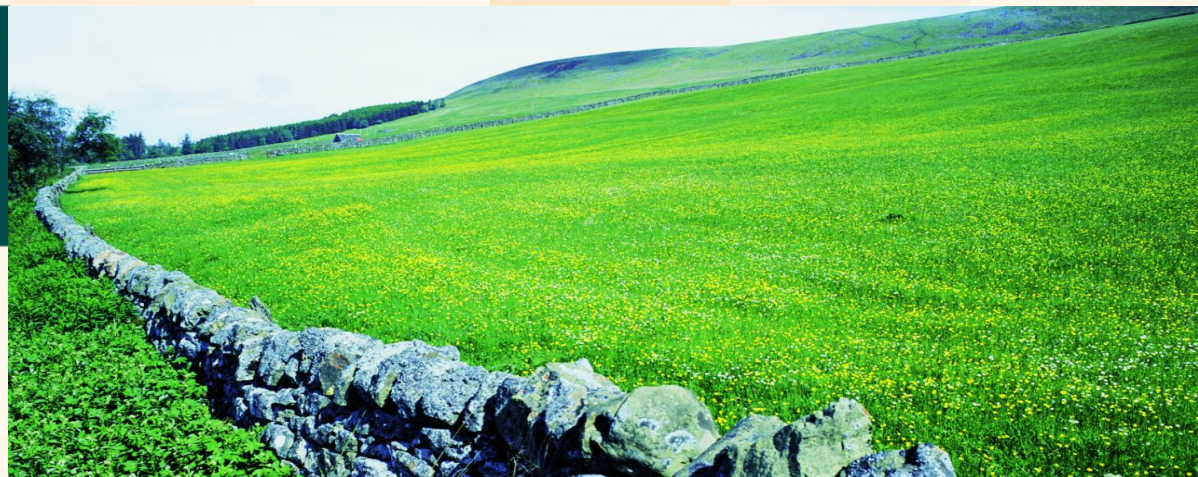




European Commission  
Agriculture and Rural Development



# Rural Development Program of Region Veneto

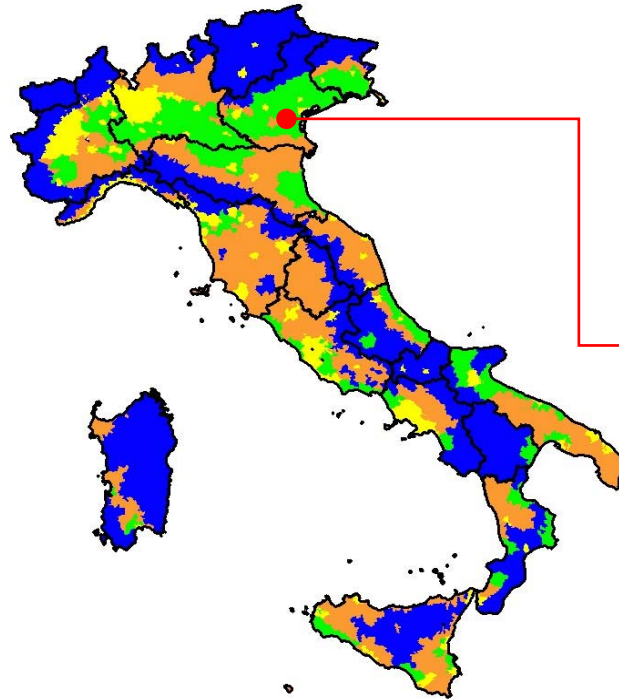
AGRI E.I.4, Bruxelles, 19-20 September 2007



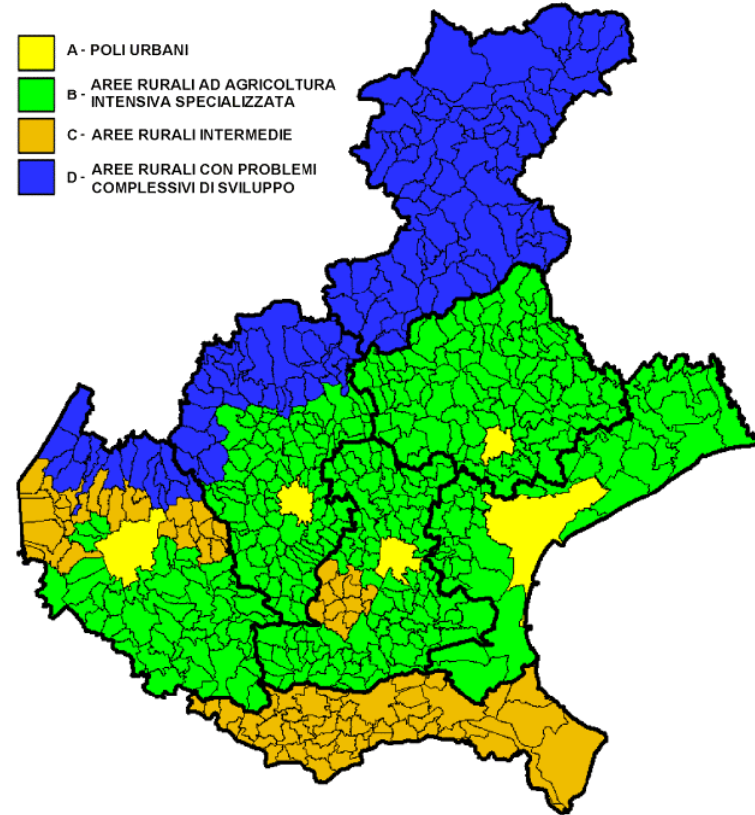
# General overview



European Commission  
Agriculture and Rural Development



- Poli Urbani
- Aree rurali ad agricoltura intensiva specializzata
- Aree rurali intermedie
- Aree rurali con problemi complessivi di sviluppo





# Main features (1)



European Commission  
Agriculture and Rural Development

## ***Socio-economic context:***

- Total population = approx. 5.300.000 inhabitants
- Density = 288 habitants/km<sup>2</sup>.
- Per capita GDP (pps) = 127% of the EU-25 average

## ***Rural areas:***

- 79,5% of the population and 95% of the territory.
- Density: 193 habitants/km<sup>2</sup>
- The 3 typologies of rural areas of the NSP are present



# Main features (2)



European Commission  
Agriculture and Rural Development

## ***Importance of the agricultural, forestry and food sector:***

### *Land utilisation*

- The utilised agricultural area covers 52% of the territory and forests 23%
- UAA (832.000 ha) 

}	arable land (65%)
	permanent crops (14%)
	permanent pastures (19%)

### *Holding dimension*

- The average surface of the agricultural holdings is 5,7 ha (IT: 6.7 ha; EU:16 ha)

### *Value added*

- The primary sector represents 2,8% of the regional value added and food industry represents 2% of it

### *Employment*

- The employment of the primary sector and the food industry are respectively 4% and 2,5% of the regional total

# EAFRD allocation Italy (mEUR)



European Commission  
Agriculture and Rural Development

1	V a l l e d ' A o s t a	5 2 , 2 2 1 , 0 0 0	0 . 6 %
2	M o l i s e	8 5 , 7 9 0 , 0 0 0	1 . 0 %
3	T r e n t o	1 0 0 , 6 5 2 , 0 0 0	1 . 2 %
4	L i g u r i a	1 0 6 , 0 4 7 , 0 0 0	1 . 3 %
5	F r i u l i - V e n e z i a G i u l i a	1 0 8 , 7 7 3 , 0 0 0	1 . 3 %
6	B o l z a n o	1 3 7 , 5 7 5 , 0 0 0	1 . 7 %
7	A b r u z z o	1 6 8 , 9 1 1 , 0 0 0	2 . 0 %
8	M a r c h e	2 0 2 , 3 2 0 , 0 0 0	2 . 4 %
9	L a z i o	2 8 8 , 3 8 4 , 0 0 0	3 . 5 %
1 0	U m b r i a	3 3 4 , 4 3 0 , 0 0 0	4 . 0 %
1 1	T o s c a n a	3 6 9 , 2 1 0 , 0 0 0	4 . 5 %
1 2	B a s i l i c a t a	3 7 2 , 6 5 0 , 0 0 0	4 . 5 %
1 3	P i e m o n t e	3 9 4 , 5 0 0 , 0 0 0	4 . 8 %
1 4	L o m b a r d i a	3 9 5 , 9 4 9 , 0 0 0	4 . 8 %
1 5	V e n e t o	4 0 2 , 4 5 7 , 0 0 0	4 . 9 %
1 6	E m i l i a - R o m a g n a	4 1 1 , 2 5 1 , 0 0 0	5 . 0 %
1 7	S a r d e g n a	5 5 1 , 2 5 0 , 0 0 0	6 . 6 %
1 8	C a l a b r i a	6 2 3 , 3 4 1 , 0 0 0	7 . 5 %
1 9	P u g l i a	8 5 1 , 3 2 7 , 0 0 0	1 0 . 3 %
2 0	C a m p a n i a	1 , 0 8 2 , 3 4 9 , 0 0 0	1 3 . 1 %
2 1	S i c i l i a	1 , 2 1 1 , 1 6 3 , 0 0 0	1 4 . 6 %
	n e t w o r k	4 1 , 4 5 9 , 8 8 3	0 . 5 %
	t o t a l I t a l y	8 , 2 9 2 , 0 0 9 , 8 8 3	1 0 0 . 0 %



# Financial weight



European Commission  
Agriculture and Rural Development

Axis	Public expenditure		EAFRD amount	
	EUR	(%)	EUR	(%)
I. Competitiveness	403.053.239	44	177.343.425	44%
II. Environment and countryside	337.780.261	44	148.623.315	37%
III. Quality of life and diversification	45.787.000	44	20.146.280	5%
IV. Leader	100.614.250	44	44.270.270	11%
V. Technical assistance	27.440.250	44	12.073.710	3%
<b>Total</b>	<b>914.675.000</b>	<b>44</b>	<b>402.457.000</b>	<b>100%</b>
<b>Spending rate including Leader</b>				
I. Competitiveness			181.770.452	45,1 %
II. Environment and countryside			153.050.342	38 %
III. Quality of life and diversification			55.562.496	14,2 %
<b>Total -TA</b>			<b>390.383.290</b>	<b>100%</b>

# Axis 1 – Measures (44%)



European Commission  
Agriculture and Rural Development

Axis/Measure	Public Expenditure	
	EUR	share
111 Vocational training and information actions	14.068.182	3,5%
112 Setting up of young farmers	65.909.091	16,4%
113 Early retirement	2.272.727	0,6%
114 Use of advisory services	13.636.364	3,4%
<i>human capital</i>	<b>95.886.364</b>	<b>23,8%</b>
121 Modernisation of agricultural holdings	140.303.239	34,8%
122 Improvement of the economic value of forests	12.954.545	3,2%
123 Adding value to agricultural and forestry products	72.272.727	17,9%
124 Cooperation for development of new products	9.363.636	2,3%
125 Infrastructure related to the development and adaptation ...	23.000.000	5,7%
<i>Physical capital</i>	<b>257.894.147</b>	<b>64,0%</b>
131 Meeting standards based on Community legislation	22.727.273	5,6%
132 Participation of farmers in food quality schemes	10.363.636	2,6%
133 Information and promotion activities	16.181.818	4,0%
<i>Quality</i>	<b>49.272.727</b>	<b>12,2%</b>
total axis 1	403.053.238	





# Measure 121



European Commission  
Agriculture and Rural Development

- Objectives: improving the integration of the agri-food chain, modernisation, supporting process/product innovation and on farm diversification (tobacco, biomass), improve quality
- Investments: land improvement, improvement of immovable property, purchase of machinery and equipment, biomass production, intangible investments (i.e. general costs)
- Priorities – priorities for investments have been defined for productive sectors based SWOT analysis (i.e. cereals: improvement of the irrigation network and technologies to save water; meat/milk: improvement, rationalisation of storage and processing, treatment and utilisation of waste material)
- Aid intensity: 45% in LFA, 30% elsewhere (+10% for young farmers)



# Axis 2 – Measures (38%)



European Commission  
Agriculture and Rural Development



Axis/Measure	Public Expenditure	
	EUR	share
211 Natural handicap payments to farmers in mountain areas	80.927.795	24,0%
213 Natura 2000 payments and payments linked to Directive ...	9.036.364	2,7%
214 Agri-environment payments	181.338.829	53,7%
215 Animal welfare payments	7.954.545	2,4%
216 Non-productive investments	18.818.182	5,6%
<i>total agricultural land</i>	<b>298.075.715</b>	<b>88,2%</b>
221 First afforestation of agricultural land	19.454.545	5,8%
225 Forest-environment payments	2.000.000	0,6%
226 Restoring forestry potential and introducing prevention ...	12.000.000	3,6%
227 Non-productive investments	6.250.000	1,9%
<i>total forestry land</i>	<b>39.704.545</b>	<b>11,8%</b>
 total axis 2	 <b>337.780.260</b>	



# Measure 214 (1)

## 8 sub-measures



European Commission  
Agriculture and Rural Development

- The maintenance of buffer areas and hedgerows introduced in place of arable crops acc. to measure 216 or PDR 2000-06 will contribute to the reduce erosion, improve water quality and to protect biodiversity and will be implemented in plains and hills (with a priority in Natura 2000 and NVZ).
- The improvement of soil quality is aiming at limiting erosion problems and improving water quality by promoting the utilisation of organic matters (manure) in the soil. The action is targeting areas with erosion problems
- Organic farming will contribute to the improvement of water quality and to the protection of biodiversity. Farmers in Natura 2000, NVZ, and areas around water collection areas will have a priority
- Habitats improvement/protection and biodiversity actions will be implemented outside Natura2000 areas in order to maintain agricultural ecosystems and to restore environmental conditions beneficial to flora and wild fauna



# Measure 214 (2)



European Commission  
Agriculture and Rural Development

- The maintenance of grassland in place of arable crops will contribute to the conservation of the landscape, to the improvement of water quality and to the protection of biodiversity
- The support to endangered breeds will contribute to the protection of biodiversity. 4 breeds of cattle, 3 of horses, 4 of sheep and 10 of domestic birds (5 chicken, 1 guinea fowls, 2 turkeys and 1 duck) are being supported.
- The water protection is being achieved by promoting conversion of arable land into greenland (pasture), maintaining green areas and banning chemicals (fertilizers, pesticides) around the picking up points.
- The maintenance of a regional biodiversity network will complement biodiversity actions

# Axis 3 – Measures (5%)



European Commission  
Agriculture and Rural Development

Axis/Measure	Public Expenditure	
	EUR	share
311 Diversification into non-agricultural activities	21.500.000	47,0%
312 Business creation and development	3.100.000	6,8%
313 Encouragement of tourism activities	3.850.000	8,4%
<i>economic development</i>	<b>28.450.000</b>	<b>62,1%</b>
321 Basic services for the economy and rural population	6.950.000	15,2%
323. Conservation and upgrading of the rural heritage	8.000.000	17,5%
<i>quality of life</i>	<b>14.950.000</b>	<b>15,2%</b>
331 Training and information	2.000.000	4,4%
341 Skills acquisition, animation and implementation of ...	387.000	0,8%
<i>human capital</i>	<b>2.387.000</b>	<b>5,2%</b>
total axis 3	45.787.000	



# Axis 4 – Measures (11%)



European Commission  
Agriculture and Rural Development



Axis/Measure	Public Expenditure	
	EUR	share
411 Implementing local development strategies. Competitiveness	8.161.425	8,1%
412 Implementing local development strategies. Environment/land	8.161.425	8,1%
413 Implementing local development strategies. Quality of life	65.291.400	64,9%
421 Implementing cooperation projects	9.000.000	8,9%
431 Running the local action group, acquiring skills and ...	10.000.000	9,9%
total axis 4	100.614.250	



# LEADER



European Commission  
Agriculture and Rural Development

- The admissible area covers 63% of the territory and 30% of the population. 14 Lags foreseen
- The selection will be based on the characteristic of the area (mainly C and D rural areas in accordance with NSP), of the partnership, of the strategy and on of its coherence to the financial resources
- Priorities for the selection: innovative approaches, cooperation, integration of agriculture into local development strategies, complementarity, coherence and compliance to EU, national and regional policies
- The axis will contribute to the achievement of the three general objectives of RD policies. 80% to axis 3



# Complementarity (1)



European Commission  
Agriculture and Rural Development

- **CMO Fruits and Vegetables:**  
criteria are defined per kind of intervention and distinguished in case of farmers association to POs.
- **CMO wine:**  
eligibility of all interventions, except actions foreseen in the CMO reconversion/restructuring plans.
- **CMO olive:**  
criteria are defined per kind of intervention

# Complementarity (2)



European Commission  
Agriculture and Rural Development

- CMO sugar: CMO sugar – the beneficiaries of the measures for restructuring and diversification (R. 320/06) will be excluded from the RDP support
- CMO milk: Milk quota regime to be respected
- For each measure of axis 3, demarcation criteria with Structural Funds set up

# Conclusions



European Commission  
Agriculture and Rural Development

- The rural development programme respects the provisions of Council Regulation (EC) n° 1698/2005 and of Commission Regulation (EC) n° 1974/2006 and it is submitted to the Committee for a favourable opinion.

