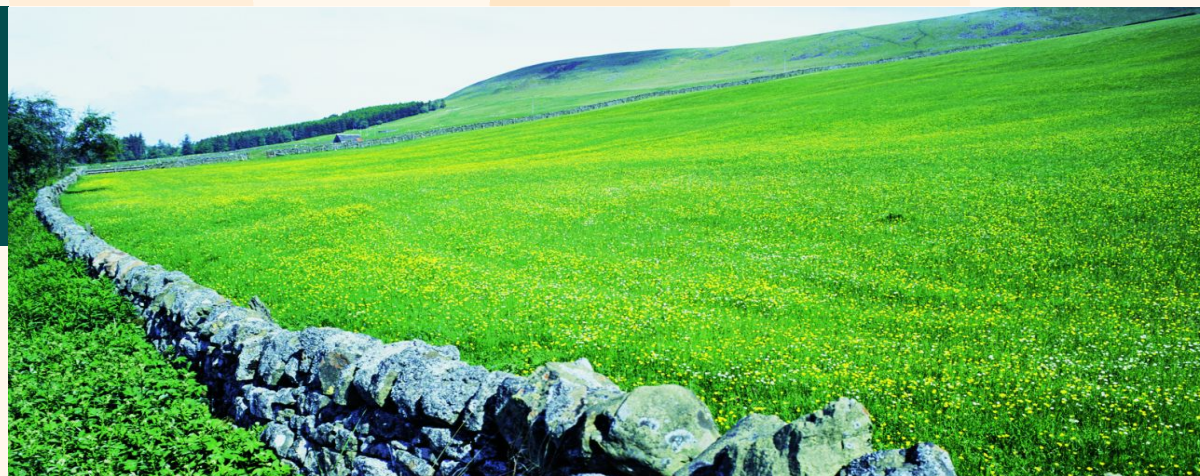




European Commission  
Agriculture and Rural Development



# Rural Development Programme Emilia Romagna

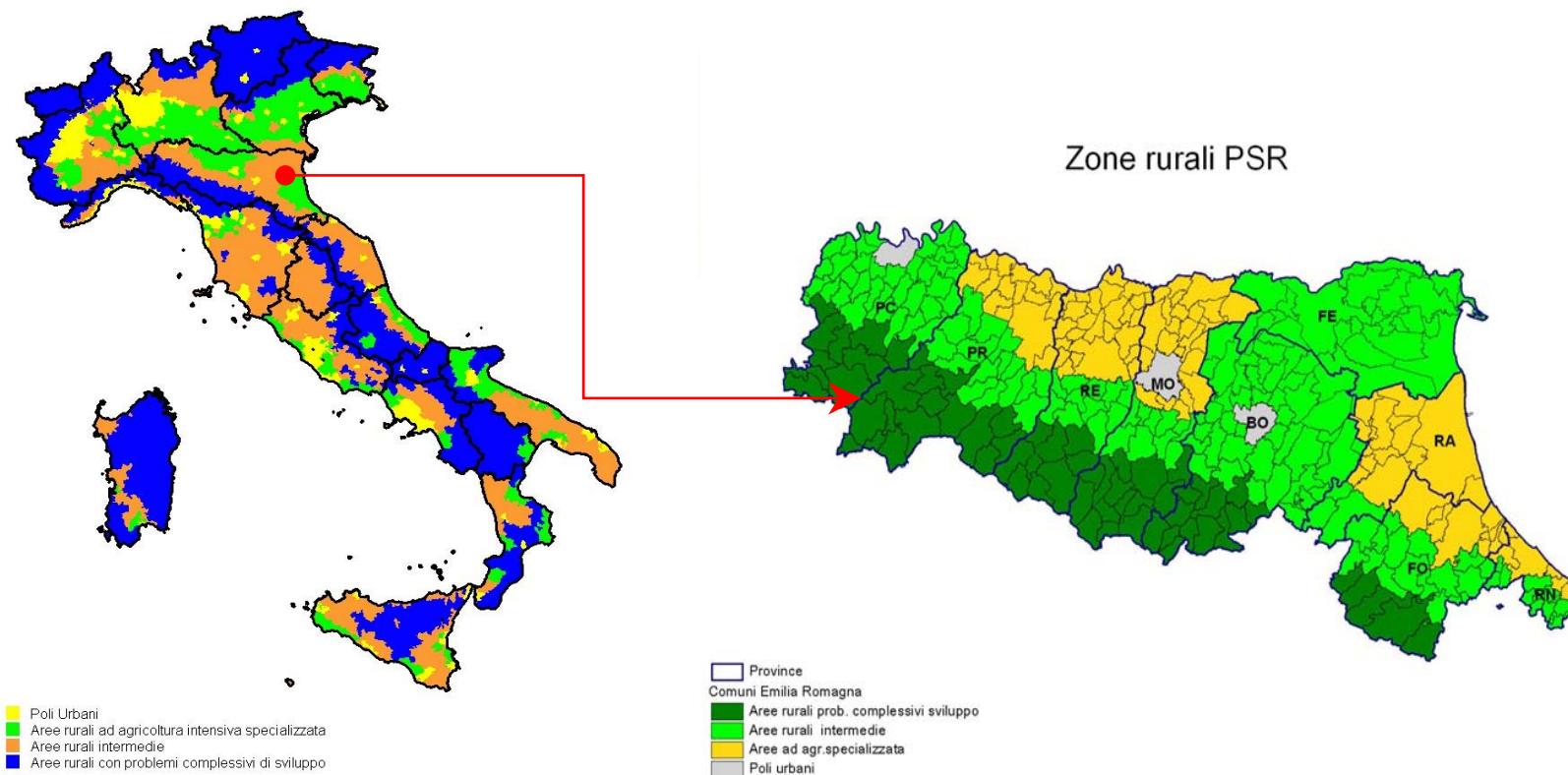
AGRI E.I.4, Bruxelles, 24-25 July 2007



# General overview



European Commission  
Agriculture and Rural Development



# EAFRD allocations Italy (EUR)



European Commission  
Agriculture and Rural Development



1	Valle d'Aosta	52,221,000	0.6%
2	Molise	85,790,000	1.0%
3	Trento	100,652,000	1.2%
4	Liguria	106,047,000	1.3%
5	Friuli-Venezia Giulia	108,773,000	1.3%
6	Bolzano	137,575,000	1.7%
7	Abruzzo	168,911,000	2.0%
8	Marche	202,320,000	2.4%
9	Lazio	288,384,000	3.5%
10	Umbria	334,430,000	4.0%
11	Toscana	369,210,000	4.5%
12	Basilicata	372,650,000	4.5%
13	Piemonte	394,500,000	4.8%
14	Lombardia	395,949,000	4.8%
15	Veneto	402,457,000	4.9%
16	Emilia-Romagna	411,251,000	5.0%
17	Sardegna	551,250,000	6.6%
18	Calabria	623,341,000	7.5%
19	Puglia	851,327,000	10.3%
20	Campania	1,082,349,000	13.1%
21	Sicilia	1,211,163,000	14.6%
	network	41,459,883	0.5%
	total Italy	8,292,009,883	100.0%





# Main features (1)



European Commission  
Agriculture and Rural Development

## ***Socio-economic context:***

- Total population = 4.1 million inhabitants.
- Population density = 187.6 inhab./km<sup>2</sup>.
- Per capita GDP (pps) = 139% of EU-25 average.

## ***Rural areas:***

- 84% of the population and 98% of the territory.
- Population density = 161.3 inhab./km<sup>2</sup>.
- The 3 typologies of rural area defined by the NSP are present.



## Main features (2)



European Commission  
Agriculture and Rural Development

### ***Importance of the agricultural, forestry and food sector:***

#### *Land utilisation*

- The utilised agricultural area covers 60% of the territory and forests 22%.
- UAA (1,074,552 ha) 

}	arable land (77.6%)
	permanent crops (13.6%)
	permanent pastures (8.7%)

#### *Holding dimension*

- The average surface of the agricultural holdings is 12.3 ha (IT: 6.7 ha; EU: 16 ha).

#### *Value added*

- The primary sector represents 3.2% of the regional value added and food industry 3.9%.

#### *Employment*

- Employment in the primary sector respects 5.5% of the regional total.

# Overall balance



European Commission  
Agriculture and Rural Development

Axes	Public Expenditure	EAFRD Contribution Rate	EAFRD Contribution	
	EUR	(%)	EUR	(%)
I. Competitiveness	382.954.545	44	168.500.000	41%
II. Environment and the countryside	397.132.955	44	174.738.500	42%
III. Quality of life and diversification	97.500.000	44	42.900.000	10%
IV. Leader	47.727.273	44	21.000.000	5%
V. Technical Assistance	9.346.591	44	4.112.500	1%
<b>Total</b>	<b>934.661.364</b>	<b>44</b>	<b>411.251.000</b>	<b>100%</b>
<b>Spending rates (including Leader)</b>				
I. Competitiveness			173.246.130	43%
II. Environment and the countryside			177.469.150	44%
III. Quality of life and diversification			56.423.220	14%
<b>Total - TA</b>			<b>407.138.500</b>	<b>100%</b>

# Axis 1 - Measures



European Commission  
Agriculture and Rural Development

Axis/Measure	Public Expenditure	
	EUR	share
111. Vocational training and information actions	15.340.909	4,0%
112. Setting up of young farmers	84.090.909	22,0%
113. Early retirement	27.532	0,0%
114. Use of advisory services	11.677.014	3,0%
<b><i>Human capital</i></b>	<b><i>111.136.364</i></b>	<b><i>29,0%</i></b>
121. Modernisation of agricultural holdings	160.909.091	42,0%
122. Improvement of the economic value of forests	5.681.818	1,5%
123. Adding value to agricultural and forestry products	84.090.909	22,0%
124. Cooperation for development of new products	7.727.273	2,0%
<b><i>Physical capital</i></b>	<b><i>258.409.091</i></b>	<b><i>67,5%</i></b>
132 Participation of farmers in food quality schemes	9.545.455	2,5%
133 Information and promotion activities	3.863.636	1,0%
<b><i>Quality</i></b>	<b><i>13.409.091</i></b>	<b><i>3,5%</i></b>



# Measure 121



European Commission  
Agriculture and Rural Development

- Objectives:
  - production costs reduction
  - restructuring non competitive sections
  - development of new products, processes and technologies
  - increase quality production
  - improvement of safety at work
  - improve environmental impacts, animal welfare and hygienic conditions
  - energy production from renewable sources
- Investments: material investments (machineries and equipment purchase, construction and reconstruction of real estate) and linked immaterial investments.
- Priorities: priority sectors (and localisation) are specified; limitations and exclusions are defined too.
- Aid intensity: disadvantaged areas 35-45% (young farmers 35-50%); other areas 35-40% (young farmers 35-45%)





# Measure 123



European Commission  
Agriculture and Rural Development

- Objectives: increase value added, support product commercialisation by means of chain integration, innovative technologies, improve agricultural and forestry product exports, modernisation of agro-industries, environmental protection and pollution prevention.
- Investments: material investments (machineries and equipment purchase, construction and reconstruction of real estate) and linked immaterial investments.
- Priorities: priority sectors are specified, in relation to localisation and some specific investments.
- Aid intensity: small and micro-sized enterprises 40%; enterprises which employ fewer than 750 persons or with annual turnover not exceeding EUR 200 million 20%.

# Axis 2 - Measures



European Commission  
Agriculture and Rural Development



Axis/Measure	Public Expenditure	
	EUR	share
211 Natural handicap payments to farmers in mountain areas	54.545.455	13,7%
212. Payments to farmers in areas with handicaps, other than ...	4.545.455	1,1%
214 Agri-environment payments	272.587.500	68,6%
215 Animal welfare payments	3.863.636	1,0%
216 Non-productive investments	13.863.636	3,5%
<b><i>Total agricultural land</i></b>	<b>349.405.682</b>	<b>88,0%</b>
221. First afforestation of agricultural land	31.818.182	8,0%
226. Restoring forestry potential and introducing prevention ...	4.000.000	1,0%
227. Non-productive investments	11.909.091	3,0%
<b><i>Total forestry land</i></b>	<b>47.727.273</b>	<b>12,0%</b>



# Measure 214

## 10 actions



European Commission  
Agriculture and Rural Development

1. Integrated production
2. Organic farming
3. Cover crops
4. Improvement of organic matter
5. Local breeds in danger of being lost to farming.
6. Local/rare plant species threatened by genetic erosion
7. Conservation of genetic resources
8. Conversion of arable into grasslands
9. Restoration/preservation of natural and semi-natural habitats.
10. Long term set aside

# Axis 3 - Measures



European Commission  
Agriculture and Rural Development

Axis/Measure	Public Expenditure	
	EUR	share
311 Diversification into non-agricultural activities	34.090.909	35,0%
313 Encouragement of tourism activities	4.545.455	4,7%
<b><i>Economic development</i></b>	<b>38.636.364</b>	<b>39,6%</b>
321. Basic services for the economy and rural population	31.840.909	32,7%
322. Village renewal and development	16.136.364	16,6%
323. Conservation and upgrading of the rural heritage	3.863.636	4,0%
<b><i>Quality of life</i></b>	<b>51.840.909</b>	<b>53,2%</b>
331 Training and information	4.772.727	4,9%
341 Skills acquisition, animation and implementation of ...	2.250.000	2,3%
<b><i>Human capital</i></b>	<b>7.022.727</b>	<b>7,2%</b>



# Measures 311 & 321



European Commission  
Agriculture and Rural Development

## Diversification into non-agricultural activities

- Main actions: agritourism and renewable energy
- Priorities: rural areas C and D (some actions undertaken in rural area B).

## Basic services for the economy and rural population

- Main actions: water resources, local roads, production/distribution of bio-energy.
- Priorities: rural areas C and D.



# Axis 4 - Measures



European Commission  
Agriculture and Rural Development

Axis/Measure	Public Expenditure	
	EUR	share
411 Implementing local development strategies. Competitiveness	8.295.455	17,4%
412 Implementing local development strategies. Environment/land	4.772.727	10,0%
413 Implementing local development strategies. Quality of life	23.636.364	49,5%
421 Implementing cooperation projects	3.863.636	8,1%
431 Running the local action group, acquiring skills and ...	7.159.091	15,0%



# Leader



European Commission  
Agriculture and Rural Development

- 5 LAGs foreseen.
- 79.3% of regional territory and 23.3% of population.
- Leader areas: between 50,000 and 100,000 inhabitants.
- Geographical coverage: admissible only rural areas C and D and communes in Leader +.
- Strategies selection in relation to:
  - Quality of partnership
  - Quality of strategy and Local Action Plan (LAP)
  - Realisation capability



# Complementarity

## 1<sup>st</sup> pillar



European Commission  
Agriculture and Rural Development

- CMO Fruit and Vegetables: demarcation on the basis of type of intervention
- CMO wine: eligibility of all kind of interventions, except planting and replanting.
- CMO olive: demarcation on the basis of type of intervention; no capacity increase.
- CMO sugar: no RDP support for areas and interventions falling under sugar restructuring plan.
- CMO Milk: respect of quota.
- CMO apiculture: demarcation on the basis of type of intervention.



# Complementarity

## Structural Funds



European Commission  
Agriculture and Rural Development



### ■ EAFRD – ESF:

- RDP will support training and information intended for farmers and farm workers; and economic operators according to eligibility for Axis 3 (rural areas and actions).
- ESF will support training intended for farm advisors and for agro-industrial workers.

### ■ EAFRD – ERDF – EFF:

- farm investments and processing/marketing of agricultural products RDP
- Bio-energy up to 1 Mw RDP.
- ICT infrastructures ERDF.
- Aquaculture EFF.



# Conclusion



European Commission  
Agriculture and Rural Development

The programme meets the regulatory requirements and is submitted for the Committee's opinion.