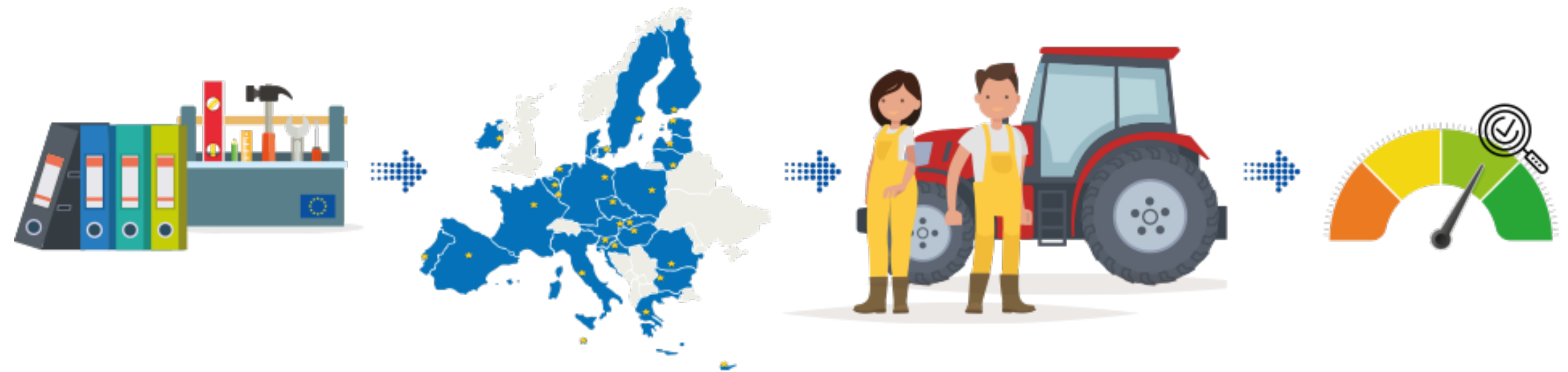




Impact and Context indicators

Expert group on Monitoring and Evaluation of the CAP



27 November 2018

Introduction

We proposed to have **48 context indicators**.

They include 26 of the proposed 28 impact indicators.

- **47 context indicators** fiches are ready (Final draft)
- Two new impact indicators fiches (I.1 and I.24) and one context (C.45) are pending

Updates were made to the fiches of the same CCIs as in 2014-2020.

Revisions going beyond simple updates are presented next.

Context Indicators

C.16 – NEW – NUMBER OF NEW (YOUNG) FARMERS

Aim: to measure an evolution in a number of new entrants to farming, including:

- Age of farm manager (e.g.: how many young farmers)
- First year as a farm manager (e.g.: when the manager has started)
- Age structure of new entrants (e.g.: how many of new entrants are young and 'old')

Data will come from ESTAT from the 2020 census, available in 2022

C.18 – UPDATED/CHANGED – IRRIGABLE AREA (not anymore IRRIGATED)

Aim: to measure the maximum area which could be irrigated in the reference year using the equipment and the quantity of water normally available on the holding.

- Ha and % of UAA
- ESTAT FSS
- Too many factors affecting "irrigated area", irrigable reflect the expectation of farmers for the need for irrigation.

Context Indicators

C.23 – NEW – LIVESTOCK DENSITY

Aim: to measure the pressure of livestock farming on the environment.

2 sub-indicators:

1 - Total livestock density - LSU/ha of utilised agricultural area (UAA)

2 - Grazing livestock density (grazing LSU/ha of fodder area)

- Number of LSU per Ha
- ESTAT FSS
- LSU enable the aggregation of livestock from various species using a conversion coefficient.

C.33 - UPDATED/CHANGED – FARMING INPUT INTENSITY (only)

Aim: to measure the UAA managed by farms with low, medium and high input intensity, as percentage of total UAA.

- % of UAA
- FADN and ESTAT – calculated by AGRI
- Second sub-indicator on area of extensive grazing deleted

Impact/context indicators - environmental

The main changes, aside of the streamlining and update, are:

I.10 GHG EMISSION FROM AGRICULTURE (C.43)

- The sub-indicator ammonia is removed (→ stand-alone one I.14)
- Reporting: national emissions reported to UNFCCC and to the EU Greenhouse' Gas Monitoring Mechanism

I.12 INCREASE SUSTAINABLE ENERGY IN AGRICULTURE (C.41)

- Source of data: Governance of the Energy Union Reporting (Annex VII. Part 1 and Annex IX), Member States' Progress Reports according to Art.22 of Directive 2009/28/EC (Renewable Energy Directive)

Impact indicators - environmental

I.13 REDUCING SOIL EROSION (C.40)

- **Thresholds:** moderate i.e. >5 t/ha/year to severe >10 t/ha/year

I.17 WEI+ (C.37)

- **new sub-indicators** expressing: a) the relative pressure of agriculture compared to other economic sectors and b) the change over time in the volume of water used by agriculture
- Data gaps/coverage

Thank you