



gLOCAL
EVALUATION WEEK
2021

Evaluation use in an inter-organisational environment: the experience of Italy's Network of Evaluation Units

The regional perspective: the experience of Emilia-Romagna Region

Silvia Martini

3rd of June 2021



nucleo
valutazione e verifica
investimenti pubblici
Regione Emilia-Romagna



RETE DEI NUCLEI
NUCLEI DI VALUTAZIONE E VERIFICA
DEGLI INVESTIMENTI PUBBLICI

DG RISORSE, EUROPA, INNOVAZIONE E ISTITUZIONI
SERVIZIO COORDINAMENTO DELLE POLITICHE EUROPEE,
PROGRAMMAZIONE, COOPERAZIONE, VALUTAZIONE
NUCLEO VALUTAZIONE E VERIFICA INVESTIMENTI PUBBLICI

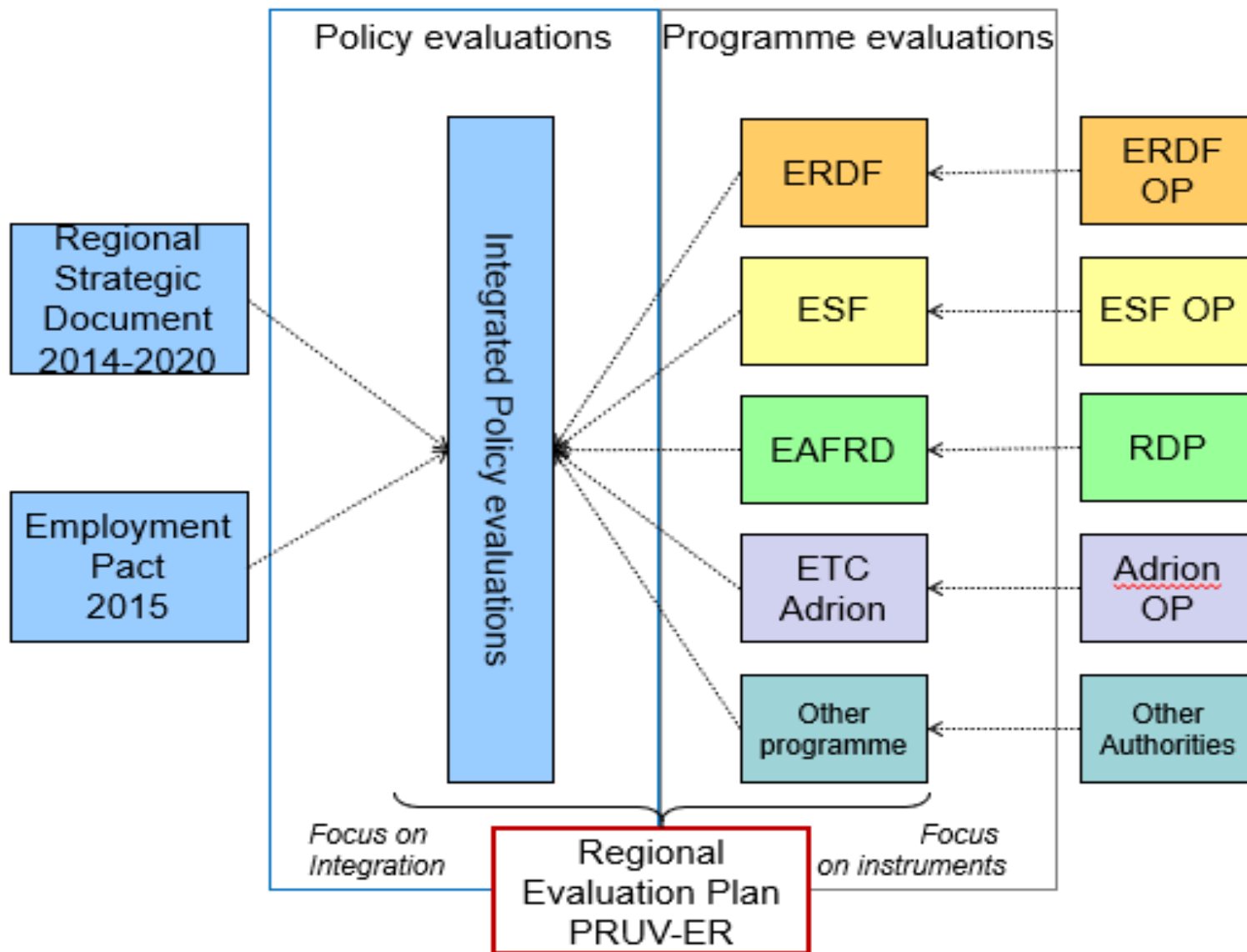


**RETERURALE
NAZIONALE
20142020**



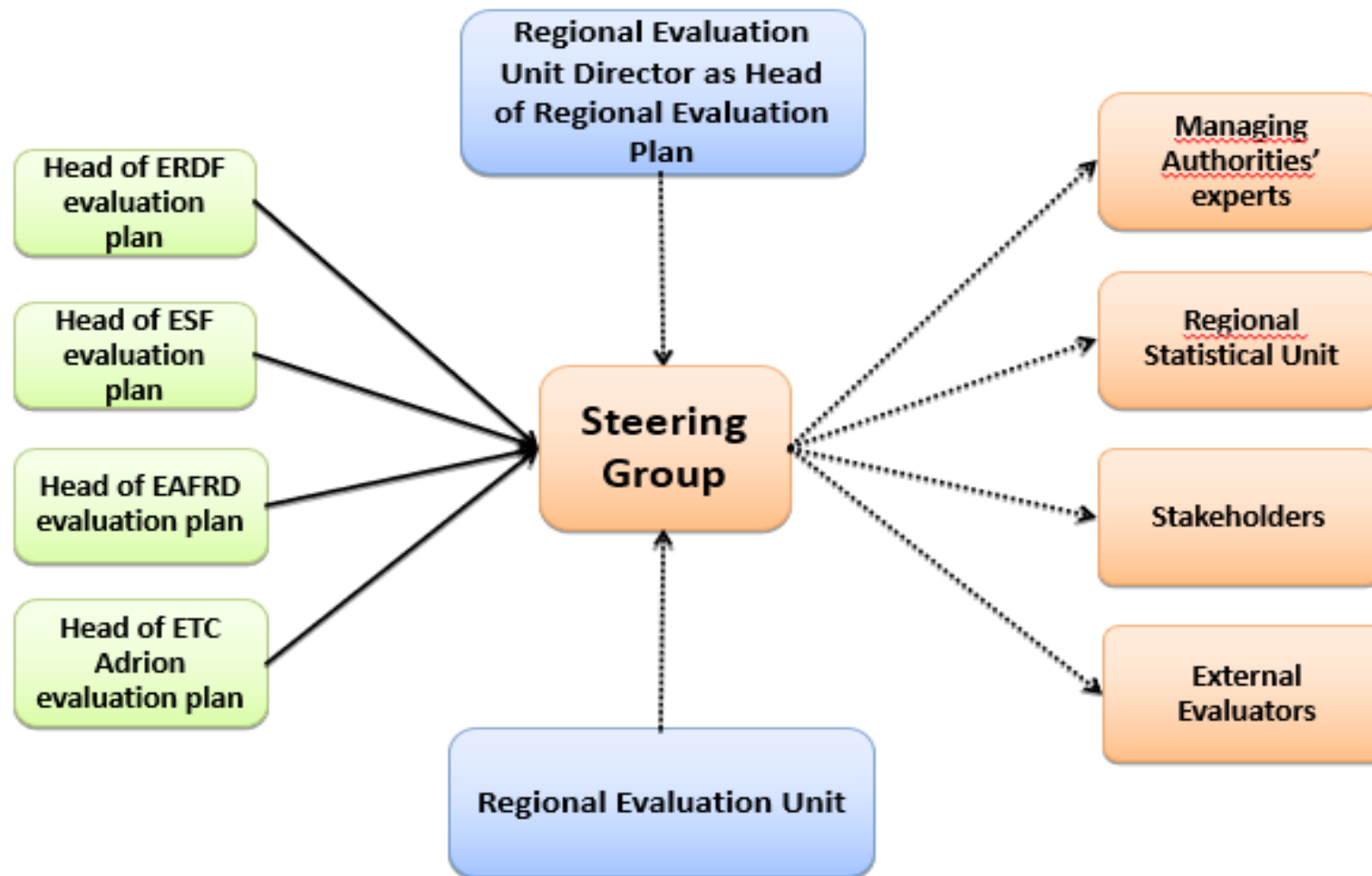
GEI
Global
Evaluation
Initiative

Framework of Cohesion Policy Evaluation in Emilia-Romagna: the regional plan



Governance of Cohesion Policy Evaluation in Emilia-Romagna Region

gLOCAL
EVALUATION WEEK
2021



 **RETE DEI NUCLEI**
NUCLEI DI VALUTAZIONE E VERIFICA
DEGLI INVESTIMENTI PUBBLICI

 **nucleo**
valutazione e verifica
investimenti pubblici
Regione Emilia-Romagna

GEI
Global
Evaluation
Initiative

 **creaa**
Consiglio per la ricerca in agricoltura
e l'analisi dell'economia agraria

RETERURALE
NAZIONALE
20142020

mipaaf
ministero delle politiche
agricole alimentari e forestali

Building an evaluation culture for effective evaluation and results management

gLOCAL
EVALUATION WEEK
2021

- Three cycles of training sessions and workshops during 2014-2020 programming period
- Tools to enforce the quality of evaluations: terms of references of the tenders for external evaluation – establishing of steering group for policy evaluation (integrated contribution of different funds to strategic policy objectives)
- Design of an organizational framework for the cooperation among programmes external evaluators
- Participation in the Evaluation Units Network activities (Evaluation Review – Laboratories on evaluation knowledge to support 2021-27 programming)



Evaluation Group on place-based instruments

gLOCAL
EVALUATION WEEK
2021

EVALUATION GROUP: the evaluation units of six Italian regions, coordinated by Emilia-Romagna, with the support of the central unit (and the team of the Assist project)

GOAL: Capitalize on evaluation findings of Cohesion Policy to extract evidences for improving programmes design in the 2021-27 cycle

RESEARCH QUESTIONS: how to develop effective place-based instruments?

How to set-up an adequate multilevel governance?

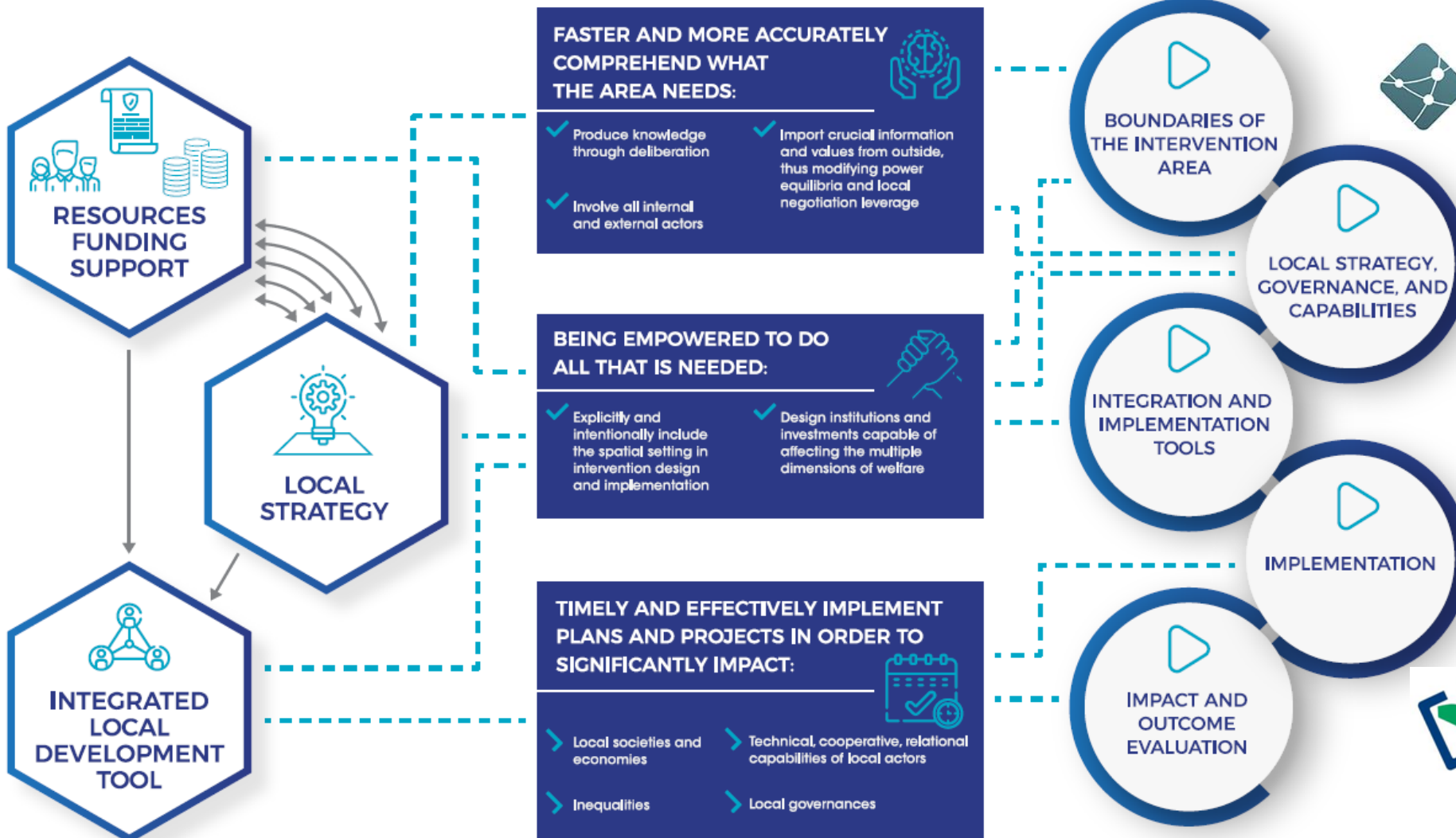
How to increase the matching between local strategies and public policies?

What did we learn from previous experiences of local development strategies?



Temporary Group
Participants

Conceptual framework of place-based Instruments



The process of identification of the evidences and the sedimentation of evaluation knowledge

gLOCAL
EVALUATION WEEK
2021

RAISING A DISCUSSION ON EVALUATION FINDINGS

- Discussion within the group of regional experts involved
- Wider discussion within the interregional working group
- Session with the central unit and the Assist project team
- Presentation to beneficiaries
- Presentation and discussion with managing authorities of the funds

SEDIMENTATION OF EVALUATION KNOWLEDGE

- Presentation and discussion within the working group PO 5 of the Partnership Agreement (Rome, 24 september 2019)
- Common reflections with Inner Areas institutional representatives (Roadmap november-december 2019)
- Publication of the Report «The implementation of the National Inner Area Strategy in Emilia-Romagna» (January 2020) – also presented at AISRE Conference - Italian Association of Regional Studies- (September 2020)



What did we learn? A method for knowledge management of evaluation results

gLOCAL
EVALUATION WEEK
2021

On the basis of the experience within the evaluation network we adopted the use of evaluation review



We elaborated a COMPENDIUM including:

- all the programme evaluations carried out in the 2014-20 period in Emilia Romagna (ERDF, ESF, EARDF programmes)
- some evaluations on place-based instruments (national strategy for inner areas, the reconstruction programme after the 2012 earthquake)
- one evaluation focused on the governance model adopted for the Employment Pact signed by the regional government and 50 stakeholder representing the regional system in 2015



The main evaluation evidences of the COMPENDIUM were illustrated in the chapter «lesson learnt from the 2014-2020 programming cycle» of the recently approved Regional Strategic Document for the 2021-27 period

GEI
Global
Evaluation
Initiative



RETERURALE
NAZIONALE
20142020

mipaaf
ministero delle politiche
agricole alimentari e forestali

Thank you

Silvia Martini

Nucleo valutazione e verifica investimenti pubblici
Regione Emilia-Romagna

silvia.martini@regione.emilia-romagna.it

nucleovalutazione@regione.emilia-romagna.it



DG RISORSE, EUROPA, INNOVAZIONE E ISTITUZIONI
SERVIZIO COORDINAMENTO DELLE POLITICHE EUROPEE,
PROGRAMMAZIONE, COOPERAZIONE, VALUTAZIONE
NUCLEO VALUTAZIONE E VERIFICA INVESTIMENTI PUBBLICI

