

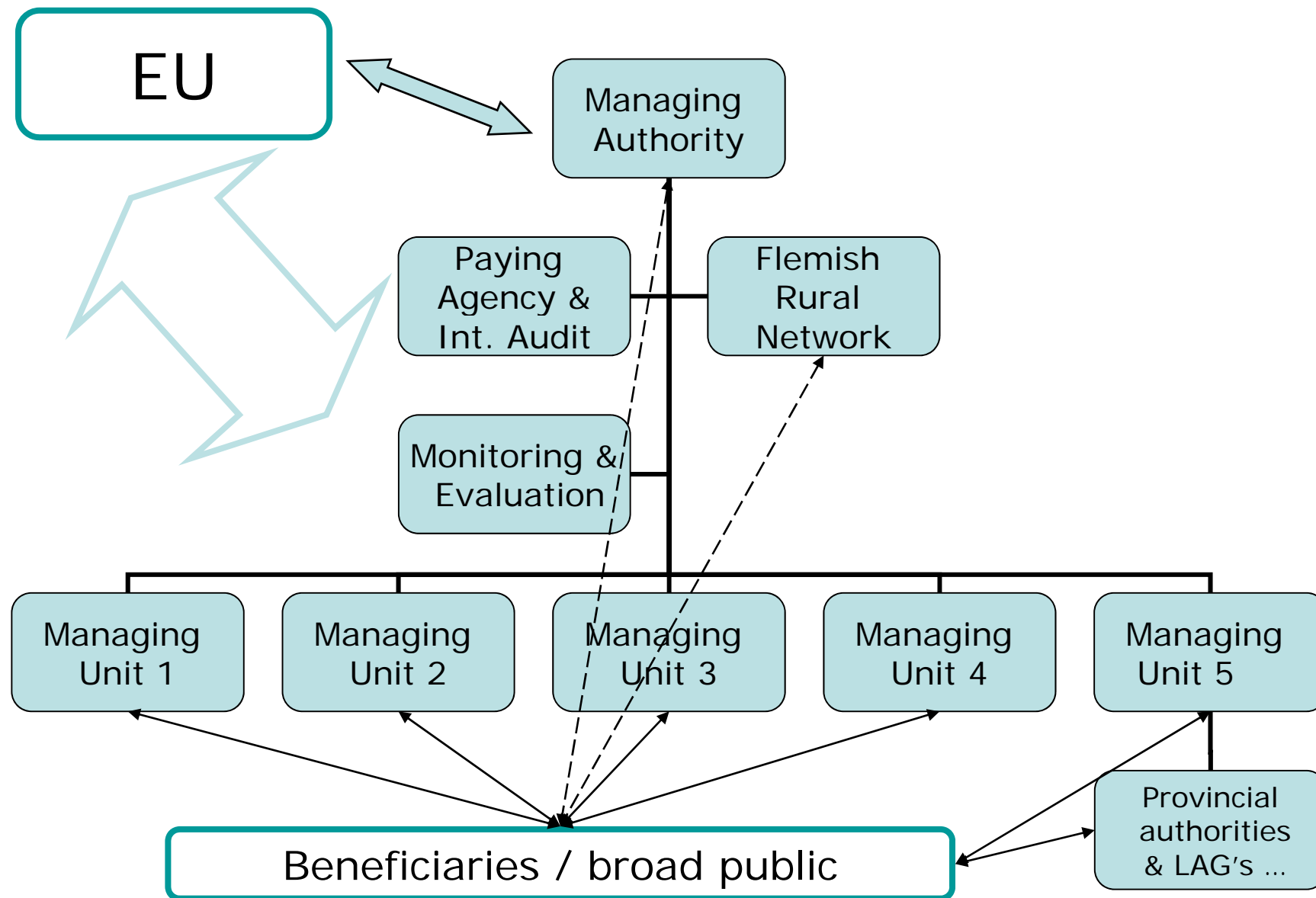


Cooperation between **Managing Authority** and **Paying Agency** in Belgium

Brussels, 28-29 September 2010



- Belgium has 2 independent Rural Development Programmes:
 - **Walloon RDP**
 - Walloon Managing Authority , Walloon Paying Agency, ...
 - **Flemish RDP**
 - Flemish Managing Authority , Flemish Paying Agency, ...
 - No coordinating authority for the 2 RDPs
- Federal Coordinating Body:
 - Represents BE in Committee on the Agricultural Funds
 - Consolidation of Flemish and Walloon control statistics
- Working methods are quite similar in Wallonia and Flanders





- **Managing Authority (MA)**

- < Department of Agriculture and Fisheries
- Since RDP I
- Tasks:
 - Coordination of the Flemish RDP (strategy, programme document & modifications, control statistics, ...)
 - Contact point to the Commission
 - Representing Flanders in RDC
 - Secretariat for Monitoring Committee
 - General communication about RDP (with Flemish Rural Network)

- **Paying Agency (PA)**

- < Agency for Agriculture and Fisheries
- Integrated in PA for pillar 1 since 2003
- Tasks:
 - Execution of all the payments for pillar 1 en 2
 - Information dissemination of the Committee on the Agricultural Funds
 - Follow up of the expenditure of the EAFRD
 - Declaration of the expenditure to the Commission
 - Development & maintenance of interface application between MUs and PA



- **Internal Audit (IA)**

- < Agency for Agriculture and Fisheries
- Tasks:
 - Audit on payments of pillar 1 and 2
 - Coordination of the Statement of assurance (art. 8(1) c iii of 1290/2005; art. 3 of 885/2006)
 - Cooperation with external auditor

- **Flemish Rural Network (RN)**

- < Department of Agriculture and Fisheries
- Tasks:
 - communication to broad public,
 - organisation of field trips and information sessions,
 - international cooperation,
 - representing Flanders in Leader subCommittee, Coordination Committee and meetings of national rural networks
 - contact point for Belgium in ERN

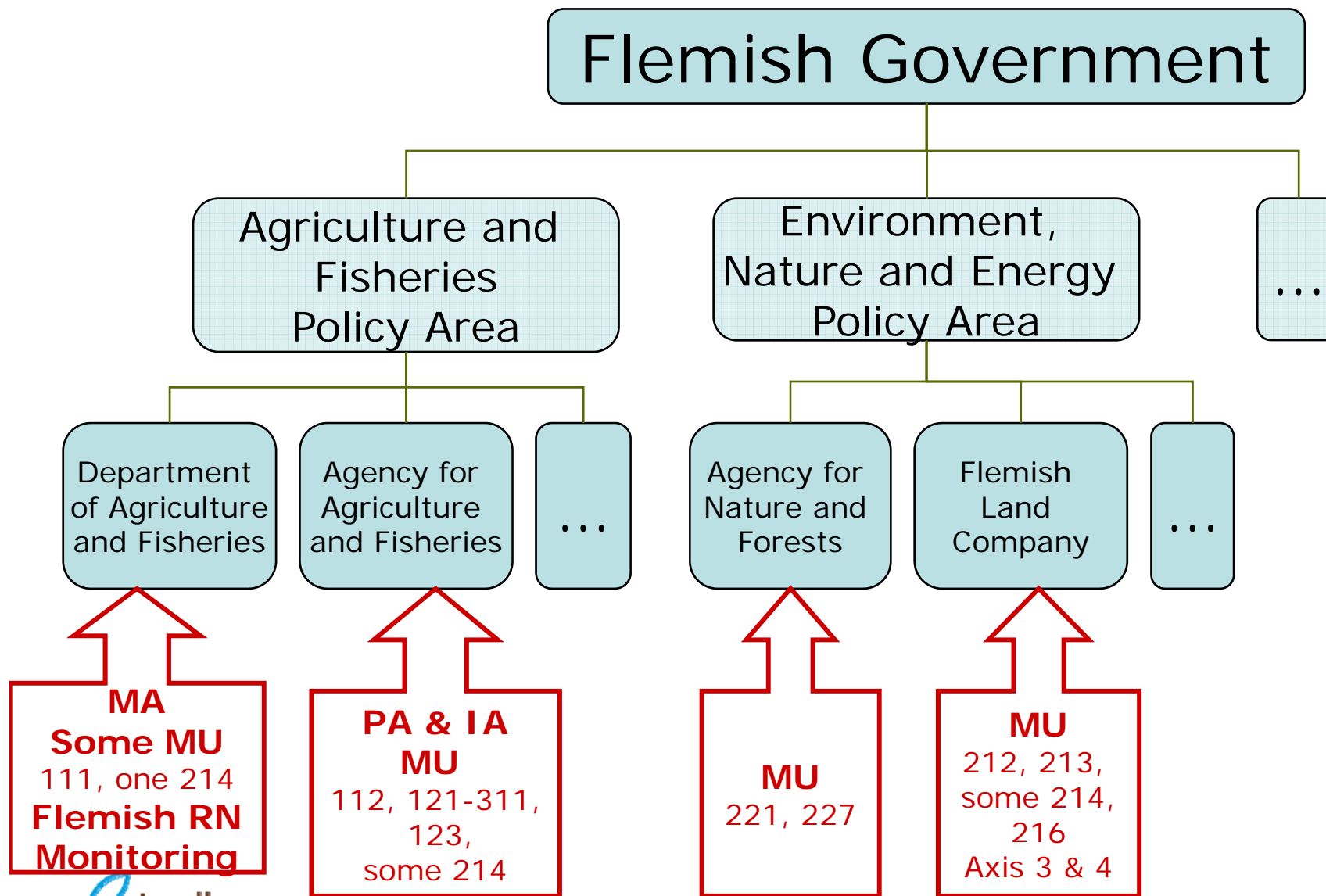


- **Monitoring & Evaluation**

- Done by Department of Agriculture and Fisheries
- Tasks:
 - Follow up of indicators & ongoing evaluation
 - Annual reports and Strategic Monitoring Report
 - Representing Flanders in Expert Comm. for evaluation of RDP's
 - Coordination of the ex-ante, mid term and ex-post evaluation

- **Managing Units (MU)**

- Spread over different entities:
 - Department of Agriculture and Fisheries
 - Agency for Agriculture and Fisheries
 - Agency for Nature and Forests
 - Flemish Land Company
- Tasks:
 - Executing the measure (application, administrative checks, on the spot controls, calculation of the correct amount of support, ...)
 - Transfer of data to PA and Monitoring team
 - Specific communication about the measures
- For some 214: conceptual deviser lies in the Departm. A&F, while the execution is done by the Agency A&F.





- **Implementation Committee**
 - Meets every month
 - Organised by MA
 - Members are: MA, PA, IA, MUs, Monitoring team and Flemish RN
 - Topics are:
 - follow up of the expenditure
 - modification of the RDP
 - modification of regulation
 - debriefing RDC
 - state of play monitoring & evaluation
 - state of play activities Flemish Rural Network
 - specific problems or changes
 - All relevant documents are exchanged by a digital platform
- **Exchange of data** between:
 - PA and Monitoring team (for monitoring and evaluation)
 - MUs / Flemish RN and PA (for payments)
 - MA and PA (latest financial plan)
- **Protocols** between PA and the different MUs
- Lots of **bilateral contacts** (ad hoc)



- Composed of:
 - Delegates of each Flemish Minister
 - Delegates of the relevant socio-economic and environmental partners
 - European Commission
 - Head of the Department of Agriculture and Fisheries
 - Head of the Paying Agency
 - Managing Authority RDP
 - Walloon director of rural development
- Only the delegates of the Flemish Ministers have voting right
 - Strong political orientation
- Secretariat is done by MA
- Meets about twice a year (on request of the MA)
- Sometimes approval by written procedure



- The need to modify a specific measure is reported by:
 - the Managing Unit / conceptual deviser, or
 - the minister's personal staff (on request of farmers' organisation), OR
 - the Managing Authority (mostly financial transfers)
- MA provides a modification template, but the MU or conceptual deviser fills in the template
- During the Implementation Committee the MA reports the planned modifications → PA is informed
- MA proofreads the modification proposal and sends it to the Monitoring Committee.
- Monitoring Committee has about 2 weeks to read the documents. In meantime MA receives already some remarks of the Commission



- After the approval of the Monitoring Committee, the proposal is sent to the Commission by the MA (SFC2007)
- MA stays the intermediary between the Commission and the MU / conceptual deviser during the whole modification process
- After approval of the Commission:
 - MA makes a new version of the RDP
 - MA sends this new RDP to:
 - the digital platform of the Implementing Committee
 - SFC 2007
 - the RDP website.



- Protocols between PA and MUs
- Implementing Committee with digital platform
 - Wallonia: special supervision committee with MA and MUs
- Data exchange between PA ⇔ MUs ⇔ Monitoring team ⇔ RN (indicators, payment claims, forecast of expenditures)
 - Flanders: automatic data exchange between MUs dealing with Axis 2
- Automatic follow-up of the budget ceilings by PA
- Digital management of payment claims submitted by LAGs and other external operators
- MA is involved in
 - technical committee of EFRD (related tot RD)
 - provincial management committees (for projects of Axis 3)
- Flemish RN is part of the Department of Agriculture and Fisheries (close cooperation with MA)



- Wallonia:
 - MA: Anne.Dethy@spw.wallonie.be
 - PA: Alain.Istasse@spw.wallonie.be
 - Website: www.pwdr.be
 - Walloon Rural Network: www.reseau-pwdr.be
- Flanders
 - MA: Belinda.Cloet@lv.vlaanderen.be
 - PA: Kris.Heyse@lv.vlaanderen.be
 - Website: www.vlaanderen.be/pdpo
 - Flemish Rural Network: www.ruraalnetwerk.be

Thank you for your attention !