



European Evaluation Network
for Rural Development



European Commission
Agriculture and Rural Development

ASSESSMENT TOOL FOR 2007-2013 MID-TERM EVALUATION REPORTS

GUIDANCE DOCUMENT

FEBRUARY 2011

CONTENT

INTRODUCTION	3
QUALITY ASSESSMENT TOOL FOR MID-TERM EVALUATION REPORTS OF THE RURAL DEVELOPMENT PROGRAMMES 2007-2013	4
1 STRUCTURE OF THE MTE REPORT	5
2 METHODOLOGY APPLIED	7
3 ASSESSMENT OF PROGRAMME PERFORMANCE AND ACHIEVEMENTS	12
4 ASSESSMENT OF IMPACTS OF THE PROGRAMME	14
5 CONCLUSIONS AND RECOMMENDATIONS	16
6 GENERAL REMARKS	18
7 AUXILIARY TABLES	19

INTRODUCTION

This **Assessment Tool** to help the Desk Officers understand and use the MTE reports, and to provide input for horizontal purposes (aggregation of achievements of RD policy at EU level, providing input to the post-2013 policy, CMEF review etc) is constructed within a reference framework defined by the Regulations, the CMEF, and the Vademecum.

Assessing the quality of the MTE Reports is an **integral and fundamental part of the evaluation process**. Feedback from the Commission on the MTE report should help the Member States to improve future evaluation activities. Furthermore, information gathered during the assessment of the MTE reports will also be used in the development of the post-2013 rural development framework, in particular the monitoring and evaluation system.

For each section the Desk Officer is asked to identify the relevant information in the MTE report. In the **textbox “Findings”** the Desk Officer is asked to describe in a few bullet points the main findings as presented in the MTE report (indicating also the page numbers where the information is located). The **textbox “Additional Remarks”**. Provides space for the Desk Officer to include relevant information or comments from his/her own experiences e.g. if the evaluator has understood the structure and implementation of the RDP, if the text was difficult to understand or particularly interesting, to point out open questions. In this textbox the Desk Officer is encouraged to use his/her own knowledge of the programme and the situation of the country/region to put the report and its findings in context.

Only four of the tables included in the annex are to be filled in. The other tables are provided for reference only, as an aide-memoire to help with completion of the assessment.

The completed MTE quality assessment is for internal use only. It will be used as the basis to prepare external “feedback” to the Managing Authorities, but the Desk Officers would not normally provide it to them “as is”.

Workflow for analysing the MTE-reports and providing feedback to the Member States

In 2011 the assessment of the MTE-reports will take place in the following manner:

- 1) **STEP 1 – Screening of MTE-reports (February-March):** EC Desk Officers will screen the MTE-reports for their programmes based on the attached MTE-Assessment tool and extract the relevant information necessary for further analysis and preparation of feedback. The contextual know-how of the Desk Officers will be crucial in this respect. The Evaluation Helpdesk provides a “Hotline” for questions related to completing the MTE-Assessment template, and additional support (e.g. Q&A sessions).
- 2) **STEP 2 – Analysing the information (March-May):** Information on programme progress and achievements (indicators etc.) will be compiled. The Evaluation Helpdesk will analyse the information in those sections of the completed templates which deal with methodological issues (sections 2 and 4), and will provide the Desk Officers with comments on the methodology used, in some cases including issues which could usefully be followed-up with Member States and evaluators (e.g. suggestions for improving ongoing and ex-post evaluation, points to be clarified etc.). *It must be stressed that the quality and value of the comments that the Helpdesk can provide is directly related to the quality of the information provided by the Desk Officers.*
- 3) **STEP 3 – Feedback (April-June):** Based on the completed assessment tool and the comments from the Evaluation Helpdesk, the Desk Officers will prepare feedback for the Managing Authorities.

**QUALITY ASSESSMENT TOOL FOR MID-TERM EVALUATION
REPORTS OF THE RURAL DEVELOPMENT PROGRAMMES 2007-
2013**

Country	
Rural Development Programme	
CCI No.	
Desk Officer – Name	
Unit	
e-mail	
Phone number	
Date	

1 Structure of the MTE report

This section covers whether the MTE report is structured so that information provided is comprehensible and traceable. Attention should also be given to the description of the specific features of the programme in its context, its implementation frame and the evaluation steps conducted as part of the overall Ongoing Evaluation.

The relevant sections of the Evaluation Report¹ are mainly Chapter 1 “Executive Summary”, Chapter 2 “Introduction”, Chapter 3 “Evaluation Context” and Chapter 5 “Description of Programme, Measures, and Budget” but also the overall appearance of the report.

1.1 Executive Summary

1.1.1 Indicate in a few bullet points the main issues covered by the Executive Summary. Is the Executive Summary an understandable “stand alone”? Are there any mentionable gaps and omissions; are there any “outstanding features”? (It is recommended to complete this part after the end of the assessment exercise!)

Findings (and page numbers)
Additional Remarks (optional)

1.2 Structure and Completeness

1.2.1 Indicate the completeness of the MTE report against the recommended CMEF format of the indicative outline of an evaluation report (according to the CMEF Guidance Note B, Chapter 7) by filling table 1 in the annex (please specify Yes / No / Partly). In addition briefly describe below the extent to which the structure of the MTE report follows this indicative outline. Are additional chapters and annexes provided?

Findings
Additional remarks (optional)

1.3 Programme design and context

1.3.1 Have the evaluators demonstrated sound understanding of the RDP? Briefly outline in a few bullet points how the main specificities of the programme (e.g. objectives, composition of measures, specific schemas clustering measures, financial weights) are presented in the MTE-

¹ See CMEF, Guidance Note B, Evaluation Guidelines, 7. “Indicative Outline of an Evaluation Report”

report. Are the changes in the programme context described in the MTE report? If yes, please describe briefly.

Findings (and page numbers)
Additional remarks (optional)

1.4 Evaluation process and context

1.4.1 Is ongoing evaluation done by the same evaluator as the MTE? Indicate briefly any information the MTE report provides about how the MTE was tendered and conducted (e.g. time for completing the exercise)?

Findings (and page numbers)
Additional remarks (optional)

1.4.2 Does the MTE report refer to key lessons from previous evaluations and other relevant reports? If yes, please mention briefly in a few bullet points.

Findings (and page numbers)
Additional remarks (optional)

2 Methodology applied

The relevant section of the Evaluation Report is mainly Chapter 4 “Methodological Approach” and Chapter 6 “Answer to Evaluation Questions”.

2.1 Evaluation approach

2.1.1 Has the set of Common Indicators (baseline, output, result and impact indicators) been used as the main basis for the evaluation, and in particular for answering the Common Evaluation Questions and for measuring impacts (see as reference tables 2 a, b, c, d in the annex).

Findings (and page numbers)
Additional remarks (optional)

2.1.2 Does the MTE report mention if the programme contains programme specific indicators (baseline and result indicators)? If yes, list them and state the measures/axes to which they refer. Describe briefly if they have been addressed in the MTE report.

Findings (and page numbers)
Additional remarks (optional)

2.1.3 Does the MTE report assess the progress of the RDP implementation against targets based on output and result indicators? If no, please explain briefly (e.g. no targets were established in the RDP).

Findings (and page numbers)
Additional remarks (optional)

2.1.4 Does the MTE report contain answers to the Common Evaluation Questions and the Horizontal Evaluation Questions (see as a reference table 3 in the Annex)? (NB It is not expected that DOs will check whether each individual EQ has been addressed – it is the general approach of the evaluator that is under consideration here.)

Findings (and page numbers)
Additional remarks (optional)

2.1.5 Can you identify any programme-specific Evaluation Questions in the MTE-report? If yes, state briefly for which measures/axes in particular.

Findings (and page numbers)
Additional remarks (optional)

2.2 Methods and sources employed

2.2.1 Give a brief outline of the methods and sources which have been used to assess uptake, outputs, and results (Table 4a serves as a reference to provide a list of commonly employed methods and sources which you may find mentioned in the MTE). Additionally, describe briefly how the National Rural Network and its activities have been assessed.

Findings (and page numbers)
Additional remarks (optional)

Describe in the following 7 questions in bullet points the method(s) used to assess impacts (see as reference table 4b which provides a non-exhaustive list of possible methods and sources which may be mentioned):

2.2.2 Has the impact of the programme on “Economic growth” been assessed in the MTE-report? If yes, please list the methods, data sources, problems identified etc.

Findings (and page numbers)
Additional remarks (optional)

2.2.3 Has the impact of the programme on “Employment creation” been assessed in the MTE-report? If yes, please list the methods, data sources, problems identified etc.

Findings (and page numbers)
Additional remarks (optional)

2.2.4 Has the impact of the programme on “Labour productivity” been assessed in the MTE-report? If yes, please list the methods, data sources, problems identified etc.

Findings (and page numbers)
Additional remarks (optional)

2.2.5 Has the impact of the programme on “Reversing Biodiversity decline” been assessed in the MTE-report? If yes, please list the methods, data sources, problems identified etc.

Findings (and page numbers)
Additional remarks (optional)

2.2.6 Has the impact of the programme on “Maintenance of high nature value farmland and forestry” been assessed in the MTE-report? If yes, please list the methods, data sources, problems identified etc.

Findings (and page numbers)
Additional remarks (optional)

2.2.7 Has the impact of the programme on “Improvement in water quality” been assessed in the MTE-report? If yes, please list the methods, data sources, problems identified etc.

Findings (and page numbers)
Additional remarks (optional)

2.2.8 Has the impact of the programme on “Contribution to combating climate change” been assessed in the MTE-report? If yes, please list the methods, data sources, problems identified etc.

Findings (and page numbers)
Additional remarks (optional)

2.2.9 Does the MTE-report mention the use of programme specific impact indicators? If yes, list them and describe how these impacts have been assessed? Please list the methods, data sources, problems identified etc.

Findings (and page numbers)
Additional remarks (optional)

2.2.10 Is there any reference in the MTE report to the use of ‘counterfactuals’ and/or the assessment of ‘net effects’ of the RDP? If yes, please indicate briefly the methods/approaches described.

Findings (and page numbers)
Additional remarks (optional)

2.3 Constraints, limitations and outlook

2.3.1 In addition to those listed above, does the report mention any particular problems or limitations (e.g. data availability and quality, methodology etc) which affected the MTE procedure or quality of results? If yes, please list any alternative approaches or solutions which were used to overcome these problems.

Findings (and page numbers)
Additional remarks (optional)

3 Assessment of programme performance and achievements

This section should cover how the MTE report describes the financial performance and efficient delivery of the programme, explains programme modifications and highlights main results achieved. The relevant sections of the Evaluation Report are mainly Chapter 5 "Description of Programme, Measures, and Budget" and Chapter 6 "Answer to Evaluation Questions".

3.1 Financial performance and delivery, efficiency

3.1.1 Indicate briefly how the MTE report describes overall programme implementation performance and utilisation of resources (e.g. provision of a table showing result indicators by axis, or assessment of results by measure etc). Highlight key points identified by the MTE report.

Findings (and page numbers)
Additional remarks (optional)

3.1.2 Does the MTE report discuss the delivery of the programme? If yes, briefly describe main comments on management performance and highlighted bottlenecks and problems. Does the MTE report identify factors which have contributed to the success or weaknesses in programme implementation? If yes, please list briefly in bullet points.

Findings (and page numbers)
Additional remarks (optional)

3.1.3 Does the MTE report discuss the efficiency of programme implementation? If yes, please describe briefly in bullet points.

Findings (and page numbers)
Additional remarks (optional)

3.2 Programme modifications and relevance

3.2.1 Does the MTE report describe significant programme modifications (including those linked to CAP HC, economic recovery package, etc.)? Does the MTE report assess whether the revised programme strategy and measures correspond to the needs of the programme area?

Findings (and page numbers)
Additional remarks (optional)

3.3 Progress and main results achieved

3.3.1 Capture the progress of programme implementation by entering the values for the axis level result indicators recorded in the MTE in table 5. If significant deviations from target levels are recorded, is any explanation given? Please comment briefly in the relevant column in the table.

3.3.2 Does the MTE report mention other results achieved that are not captured by Common Result Indicators or programme specific result indicators? If yes, please describe briefly in bullet points.

Findings (and page numbers)
Additional remarks (optional)

3.3.3 Does the MTE report identify good practice examples in implementation of measures? If yes, please describe briefly in bullet points.

Findings (and page numbers)
Additional remarks (optional)

4 Assessment of impacts of the programme

This section should cover the programme impacts identified in the MTE especially the seven common impact indicators of the CMEF. Given the relatively short “operational” time which has elapsed since the programme period began, it may be difficult to identify significant impacts but first indications of impacts may be provided, perhaps qualitatively, if not quantitatively. The relevant section of the Evaluation Report is mainly Chapter 6 “Answers to Evaluation Questions”.

4.1 Level of assessment of impacts, targets

4.1.1 If targets for impact indicators are not already defined in the RDP, does the MTE report address this issue by reference to for example, work done as part of the ongoing evaluation or work carried out as part of the MTE?

Findings (and page numbers)
Additional remarks (optional)

4.1.2 Have impacts been assessed at programme, axis, or measure level?

Findings
Additional remarks (optional)

4.2 Overall programme impact

4.2.1 Capture the recorded impact of the programme by entering the values included in the MTE in table 6². If some impact indicators have significant deviations from the targets, include in the comments column of the table any reasons which are given in the MTE.

² In the case the MTE report delivers impacts on another level than the programme level, e.g. at measure level, please indicate this in the table

4.2.2 Does the MTE report mention other impacts apart from those captured by the seven Common Impact Indicators or other programme specific impact indicators? If yes, please describe briefly in bullet points.

Findings (and page numbers)
Additional remarks (optional)

5 Conclusions and recommendations

This section covers the conclusions and recommendations of the MTE report and the logic and clarity with which they are formulated and expressed. The relevant section of the Evaluation Report is mainly Chapter 7 “Conclusions and Recommendations”.

5.1 Main conclusions and recommendations

5.1.1 Highlight in bullet points the main conclusions and recommendations related to programme design (internal and external coherence, continued relevance of the strategy, balance of resources, etc.), delivery of the programme, and programme performance.

Conclusions (and page numbers)
Recommendations (and page numbers)
Additional remarks (optional)

5.1.2 Either, complete Table 7, by including bullet points showing the main conclusions and recommendations related to particular measures, or if preferred, list bullet points in the box below.

Findings related to conclusions (and page numbers)
Findings related to recommendations (and page numbers)
Additional remarks (optional)

5.1.3 Highlight in bullet points the main conclusions and recommendations related to programme monitoring and evaluation.

Conclusions (and page numbers)
Recommendations (and page numbers)
Additional remarks (optional)

5.1.4 Highlight in bullet points other main conclusions and recommendations not covered by the previous topics (e.g. on the National Rural Networks)

Conclusions (and page numbers)
Recommendations (and page numbers)
Additional remarks (optional)

5.2 Is the report CLEAR?

5.2.1 Are the conclusions and recommendations CLEAR (i.e. Concise, Logical, Evidence based, Analytical and Relevant)? Is there an identifiable logical sequence linking conclusions and recommendations to the findings of the MTE?

Findings
Additional remarks (optional)

6 General remarks

6.1 Is there any particular element emerging from the report that the Desk Officer would like to highlight, a feature that should be widely adopted or strictly avoided?

Comments:

6.2 Are there any particular issues that the Desk Officer would like to highlight in relation to the implementation of the CMEF?

Comments on the CMEF:

6.3 Overall view of the whole MTE report (please put an X) (for internal purposes only)

	Not	partly	largely	fully
Clear				
Complete				
Valid				

- Clarity (Clearness) refers to the structure of the report including Executive Summary;
- Completeness addresses all topics mentioned in the CMEF “Indicative Outline of an Evaluation Report”; and
- Validity refers to the existence of sound links between analysis-findings-conclusions-recommendations.

7 Auxiliary tables

Table #	Title	Comments
Table 1	Structure and Completeness	to be filled in
Table 2a	Overview on Baseline Indicators	for reference
Table 2b	Overview on Output Indicators per measure	for reference
Table 2c	Overview on Result Indicators per axis	for reference
Table 2d	Overview on Impact Indicators	for reference
Table 3	Overview on Common Evaluation Questions	for reference
Table 4a	Overview on methods and sources in general	for reference
Table 4b	Overview on methods and sources related to assessment of impacts / common impact indicators	for reference
Table 5	Progress of Result Indicators related to axes (Target/Performance comparison)	to be filled in
Table 6	Progress of Impact Indicators (Target/Performance comparison)	to be filled in
Table 7	Overview Conclusions and Recommendations per measure	to be filled in

Table 1: Structure and Completeness

CHAPTERS of indicative outline of an evaluation report according to CMEF Guidance note B (chapter 7)	COMPLETENESS: Are the foreseen parts covered in the MTE-report? (yes/no/partly)	comments (if any...)
1. Executive summary		
Main findings of the evaluation		
Conclusions and recommendations		
2. Introduction		
Purpose of the report		
Structure of the report		
3. The Evaluation Context		
Brief contextual information about the programme: related national policies, social and economic needs motivating assistance, identification of beneficiaries or other target groups		
Description of the evaluation process: recapitulation of the terms of reference, purpose and scope of the evaluation		
Brief outline of previous evaluations related to the programme		
4. Methodological Approach		
Explanation of the evaluation design and the methods used		
Description of key terms of programme-specific and the common evaluation questions, judgment criteria, target levels.		
Sources of data, techniques for data collection (questionnaires, interviews; size and selection criteria for samples ...); information about how the indicators are calculated in order to assess the quality and reliability of the data and identify possible biases.		
Techniques for replying to the evaluation questions and arriving at conclusions.		
Problems or limitations of the methodological approach.		
5. Description of Programme, Measures, and Budget		
Programme implementation: actors involved, institutional context		
Composition of the programme; description of priorities and measures		
Intervention logic of single measure		
Budget foreseen for the entire programming period		
Uptake and budget actually spent		
6. Answers to Evaluation Questions		
Analysis and discussion of indicator(s) with respect to judgment criteria and target levels referred to by evaluation questions.		
Analysis and discussion of quantitative and qualitative information from public statistics, specific surveys/enquiries, or other sources.		
Answers to the evaluation question		
7. Conclusions and Recommendations		
Coherence between the measures applied and the objectives pursued; balance between the different measures within a programme.		
Degree of achieving programme-specific objectives as well as objectives set out in the national strategy and the Community Strategy.		
Recommendations based on evaluation findings, including possible proposals for the adaptation of programmes.		

Table 2a: Overview on Baseline Indicators

Baseline Indicators	
	Objectives related
B1*	Economic development (GDP per capita (PPS as % of EU25 = 100))
B2*	Employment rate (in % total population 15-64 y.o.)
B3*	Unemployment rate (in % active population 15-64 y.o.)
B 4	% farmers with basic and full education attained
B 5	Ratio between young farmers (<35 years) and farmers (>55 years)
B 6*	Labour productivity in agriculture (GVA/AWU) thousand euro/AWU or % from EU 25=100
B 7	Gross fixed capital formation in agriculture mio euro
B 8	Employment in primary sector (000s)
B 9	GVA in primary sector mio euro
B 10*	GVA/employee in food industry (000s/employed)
B 11	Gross fixed capital formation in food industry mio euro
B 12	Employment in food industry (000s)
B 13	GVA in food industry mio euro
B 14*	GVA/employee in forestry (000s/employed)
B 15	Gross fixed capital formation in forestry mio euro
B 16	Importance of semi-subsistence farming in New Member States (%)
B 17*	Trends of index of population of farmland birds (2000 = 100)
B 18*	High Nature Value farmland and forestry (% of UAA) or ha
B 19	Area of forest by forest type (% of total FOWL)
B20*	Water quality: Gross nutrient balances (kg/ha)
B 21	Water quality : pollution by nitrates and pesticides
B 22	Areas at risk of soil erosion (tons/ha)
B 23	Organic farming (Ha)
B 24*	Climate change : Production of renewable energy
B 25	Climate change : UAA devoted to renewable energy and biomass crops (Ha)
B 26	Climate change/air quality : gas emissions from agriculture
B 27*	% sole holders-managers with other gainful activity
B 28*	Employment in second and tertiary sector (000s)
B 29*	GVA in primary and secondary sector (Mio Euro)
B 30*	Self-employed persons (000s)
B 31	Tourism infrastructure in rural areas (number of bedplaces)
B 32*	Persons having subscribed to DSL internet as a percentage of total population (%)
B 33*	GVA in services as percentage of total GVA (%)
B 34	Annual crude rate of net migration (per 1000 inhabitants)
B 35*	% Adults (25-64 years) participating in life-long education and training
B 36	Share of population covered by Local Action Groups (%)
	Context related
BC 1	Designation of rural areas
BC 2	Importance of rural areas
BC 3	Agricultural land use
BC 4	Farm structure
BC 5	Forestry structure
BC 6	Forest productivity (m ³ overbark/ha)
BC 7	Land cover
BC 8	Less favoured areas
BC 9	Areas of extensive agriculture (% of UAA)
BC 10	Natura 2000 area
BC 11	Biodiversity: Protected forest
BC 12	Average annual increase of forest and other wooded land areas (Ha/year)
BC 13	Forest ecosystem health (% of trees in defoliation classes 2-4)
BC 14	% territory designated as Nitrate Vulnerable Zone
BC 15	% irrigated UAA
BC 16	Protective forests concerning primarily soil and water (% of forest area)
BC 17	Population density (inhabitants / km ²)
BC 18	Age structure
BC 19	Structure of the economy
BC 20	Structure of employment
BC 21	Long-term unemployment (%)
BC 22	% Adults (25-64 years) with medium and high educational attainment
BC 23	Internet infrastructure (DSL coverage in % of people)

Table 2b: Overview on Output Indicators per measure

	Measure		Indicator
111	Vocational training and information actions	Output	Number of participants in training
		Output	Number of training days received
112	Setting up of young farmers	Output	Number of assisted young farmers
		Output	Total volume of investment ('000 EUR)
113	Early retirement	Output	Number of beneficiaries (farmers/farm workers)
		Output	Number of hectares released
114	Use of advisory services	Output	Number of farmers supported
		Output	Number of forest holders supported
115	Setting up of management, relief and advisory services	Output	Number of newly set up services
121	Modernisation of agricultural holdings	Output	Number of farm holdings supported
		Output	Total volume of investment ('000 EUR)
122	Improvement of the economic value of forests	Output	Number of forest holdings supported
		Output	Total volume of investment ('000 EUR)
123	Adding value to agricultural and forestry products	Output	Number of enterprises supported
		Output	Total volume of investment ('000 EUR)
124	Cooperation for development of new products, processes and technologies in the agriculture and food sector and in the forestry sector	Output	Number of cooperation initiatives supported
125	Infrastructure related to the development and adaptation of agriculture and forestry	Output	Number of operations supported
		Output	Total volume of investment ('000 EUR)
126	Restoring agricultural production potential damaged by natural disasters and introducing appropriate prevention actions	Output	Area of damaged agricultural land supported (Ha)
		Output	Total volume of investment ('000 EUR)
131	Meeting standards based on Community legislation	Output	Number of beneficiaries
132	Participation of farmers in food quality schemes	Output	Number of farm holdings supported
133	Information and promotion activities	Output	Number of actions supported
141	Semi-subsistence farming	Output	Number of semi-subsistence farm holdings supported
142	Producer groups	Output	Number of producer groups supported
		Output	Turnover of supported producer groups ('000 EUR)
211	Payments to farmers in areas with handicaps, mountain areas (Article 36 (a) (i) of Reg. (EC) N. 1698/2005)	Output	Number of holdings supported
		Output	UAA supported (Ha)
212	Payments to farmers in areas with handicaps, other than mountain areas (Article 36 (a) (ii) of Reg. (EC) N. 1698/2005)	Output	Number of holdings supported
		Output	UAA supported (Ha)
213	Natura 2000 payments and payments linked to Directive 2000/60/EC (WFD)	Output	Number of holdings supported
		Output	UAA supported (Ha)
214	Agri-environment payments	Output	Number of holdings supported
		Output	Total area supported (Ha)
		Output	Physical area supported (Ha)
		Output	Number of actions related to genetic resources
		Output	Number of contracts
215	Animal welfare payments	Output	Number of farm holdings supported
		Output	Number of contracts
216	Non-productive investments	Output	Number of holdings supported
		Output	Total volume of investment ('000 EUR)
221	First afforestation of agricultural land	Output	Number of beneficiaries
		Output	Number of afforested land (Ha)
222	First establishment of agroforestry systems on agricultural land	Output	Number of beneficiaries
		Output	UAA supported (Ha)
223	First afforestation of non-agricultural land	Output	Number of beneficiaries
		Output	Number of afforested land (Ha)
224	Natura 2000 payments	Output	Number of forest holdings supported
		Output	Forest land supported (Ha)
225	Forest-environment payments	Output	Number of forest holdings supported
		Output	Total forest area supported (Ha)
		Output	Physical forest area supported (Ha)
		Output	Number of contracts
226	Restoring forestry potential and introducing prevention actions	Output	Number of actions supported
		Output	Supported area
		Output	Total volume of investment ('000 EUR)
227	Non-productive investments	Output	Number of forest holders supported
		Output	Total volume of investment ('000 EUR)
311	Diversification into non-agricultural activities	Output	Number of beneficiaries
		Output	Total volume of investment ('000 EUR)
312	Business creation and development	Output	Number of micro-enterprises supported
313	Encouragement of tourism activities	Output	Number of new tourism activities supported
		Output	Total volume of investment ('000 EUR)
321	Basic services for the economy and rural population	Output	Number of actions supported
		Output	Total volume of investment ('000 EUR)
322	Village renewal and development	Output	Number of villages where actions took place
		Output	Total volume of investment ('000 EUR)
323	Conservation and upgrading of the rural heritage	Output	Number of actions supported
		Output	Total volume of investment ('000 EUR)
331	Training and information for economic actors operating in the fields covered by Axis 3	Output	Number of economic actors supported
		Output	Number of training days received
341	Skills acquisition, animation and implementation	Output	Number of participants in actions
		Output	Number of private-public partnerships
		Output	Number of actions supported
41 (1)	Implementing local development strategies (3 axes)	Output	Number of LAGs
		Output	Total size of the LAG area (km2)
41 (2)		Output	Total population in LAG area
41 (3)		Output	Number of projects financed by LAG
		Output	Number of beneficiaries
421	Implementing cooperation projects	Output	Number of cooperation projects supported
		Output	Number of cooperating LAGs
431	Running the local action group, acquiring skills and animating the territory as referred to in article 59	Output	Number of actions supported

Table 2c: Overview on Result Indicators per axis

Axis /Objective	Common Result Indicator		
Improving the competitiveness of the agricultural and forestry sector	1	Number of participants that successfully ended a training activity related to agriculture and/or forestry	
	2	Increase in GVA in supported holdings/enterprises ('000 EUR)	
	3	Number of holdings / enterprises introducing new products and/or new techniques	
	4	Value of agricultural production under recognized quality label/standards (millions of euros)	
	5	Number of farms entering the market	
Improving the environment and the countryside through land management	6	Area under successful <u>agricultural</u> land management contributing to biodiversity, water quality, mitigating climate change, soil quality, avoidance of marginalisation and land abandonment (ha)	
	6	Area under successful <u>forestry</u> land management contributing to biodiversity, water quality, mitigating climate change, soil quality, avoidance of marginalisation and land abandonment (ha)	
Improving the quality of life in rural areas and encouraging diversification of economic activities	7	Increase in Non-agricultural gross value added in supported business ('000 EUR)	
	8	Gross number of jobs created	
	9	Additional number of tourist visits	Number of day visitors
			Number of overnight stays
	10	Population in rural areas benefiting from improved services (unique number of persons)	
	11	Increase in internet penetration in rural areas (unique no of persons)	
	12	Number of participants that successfully ended a training activity in the field of axis 3 (unique no of persons)	

Table 2d: Overview on Impact Indicators

Common Impact indicators	
I1	Economic growth (net additional Gross Value Added in PPS)
I2	Employment creation (net additional full time equivalent jobs created)
I3	Labour productivity (change in GVA per Full time equivalent-GVA/FTE)
I4	Reversing biodiversity decline (change in trend in biodiversity decline measured by farmland bird species population (%))
I5	Maintenance of high natura value farming and forestry areas (change in HNV areas)
I6	Improvement in water quality (change in gross nutrient balance kg/ha)
I7	Contribution to combating climate change (increase in production of renewable energy (ktons))

Table 3: Overview on Common Evaluation Questions

No.	Code	Measure	M-No.	Common Evaluation questions
1	111	Vocational training and information actions, including diffusion of scientific knowledge and innovative practises for persons engaged in the agricultural, food and forestry sectors (Article 20 (a) (i) of Reg. (EC) N° 1698/2005)	111.1	To what extent have the actions related to training, information and diffusion of knowledge and innovative practises improved the labour productivity and/or other elements related to competitiveness in the agricultural, food and forestry sector?
2			111.2	To what extent have training activities contributed to improving sustainable land management, including sustainable management of natural resources?
3			111.3	To what extent are the assisted training courses in accordance with needs and coherent with other measures of the programme?
4	112	Setting up of young farmers (Article 20 (a) (ii) of Reg. (EC) N°1698/2005)	112.1	To what extent has the aid facilitated the enduring setting-up of young farmers of either sex?
5			112.2	To what extent has the aid facilitated the structural adjustment after the initial establishment of young farmers? of the holdings
6			112.3	To what extent has the aid contributed to improving the human potential in the agricultural sector?
7			112.4	To what extent has the aid contributed to improving the competitiveness of the agricultural sector?
8	113	Early retirement of farmers and farm workers (Article 20 (a) (iii) of Reg. (EC) N° 1698/2005)	113.1	To what extent has the aid for early retirement contributed to a structural change of the holdings, in particular through synergies with other measures?
9			113.2	To what extent has the aid contributed to improving the human potential in the agricultural sector?
10			113.3	To what extent has the aid contributed to improving the competitiveness of the agricultural sector?
11	114	Use of advisory services by farmers and forest holders (Article 20 (a) (iv) of Reg. (EC) N° 1698/2005)	114.1	To what extent has the scheme improved the management and the economic performance of agricultural and forestry holdings? Detail with respect to: • production techniques • quality standards • occupational safety conditions • management of natural resources
12			114.2	To what extent has the scheme contributed to improving the human potential in the agricultural sector?
13			114.3	To what extent has the scheme contributed to improving the competitiveness of the agricultural sector?
14	115	Setting up of farm management, farm relief and farm advisory services, as well as of forestry advisory services (Article 20 (a) (v) of Reg. (EC) N° 1698/2005)	115.1	To what extent has the scheme addressed the relevant elements for improving the farm management?
15			115.2	To what extent has the scheme improved the management and the economic performance of agricultural and forestry holdings? Detail with respect to: • production techniques • quality standards • occupational safety conditions • management of natural resources
16			115.3	To what extent has the scheme contributed to improving the competitiveness of the agricultural sector?
17	121	Modernisation of agricultural holdings (Article 20 (b) (i) of Reg. (EC) N° 1698/2005)	121.1	To what extent have supported investments contributed to a better use of production factors on agricultural holdings? In particular, to what extent have supported investments facilitated the introduction of new technologies and innovation?
18			121.2	To what extent have supported investments enhanced market access and market share of agricultural holdings?
19			121.3	To what extent have supported investments contributed to an enduring and sustainable activity of agricultural holdings?
20			121.4	To what extent have supported investments contributed to improving the competitiveness of the agricultural sector?
21	122	Improving the economic value of forests (Article 20 (b) (ii) of Reg. (EC) N° 1698/2005)	122.1	To what extent have supported investments contributed to increasing the diversification of production of forest holdings?
22			122.2	To what extent have supported investments contributed to enhancing market access and market share of forest holdings, in sectors such as the sector of renewable energy?
23			122.3	To what extent have supported investments contributed maintaining or enhancing the sustainable management of forests?
24			122.4	To what extent have supported investments contributed to increasing competitiveness of forest holdings?
25	123	Adding value to agricultural and forestry products (Article 20 (b) (iii) of Reg. (EC) N° 1698/2005)	123.1	To what extent have supported investments contributed to introducing new technologies and innovation?
26			123.2	To what extent have supported investments contributed to improving the quality of agricultural and forestry products?
27			123.3	To what extent have supported investments contributed to improving the efficiency in the processing and marketing of agricultural and forestry products?
28			123.4	To what extent have supported investments contributed to enhancing market access and market share of agricultural and forest holdings, including sectors such as the sector of renewable energy?
29			123.5	To what extent have supported investments contributed to improving the competitiveness of the agricultural and forestry sector?

30	124	Cooperation for development of new products, processes and technologies in the agriculture and food sector and in the forestry sector (Article 20 (b) (iv) of Reg. (EC) N° 1698/2005)	124.1	To what extent has the support enhanced market access and market share for agriculture and forestry primary products through the development of new products, processes and technologies by means of cooperation of product line actors?
31			124.2	To what extent has the support contributed to improving the competitiveness of the agricultural, forestry and food sector?
32	125	Improving and developing infrastructure related to the development and adaptation of agriculture and forestry (Article 20 (b) (v) of Reg. (EC) N° 1698/2005)	125.1	To what extent has the scheme contributed to restructuring and developing physical potential through the improvement of infrastructures?
33			125.2	To what extent has the scheme promoted the competitiveness of agricultural and forestry holdings through the improvement of infrastructures?
34	126	Restoring agricultural production potential damaged by natural disasters and introducing appropriate prevention actions (Article 20 (b) (vi) of Reg. (EC) N° 1698/2005)	126.1	To what extent have supported investments contributed to maintain the economic performance of agricultural holdings through the restoration and/or preservation of the agricultural production potential?
35			126.2	To what extent have supported investments contributed to improving the competitiveness of the agricultural and forestry sector?
36	131	Helping farmers to adapt to demanding standards based on Community legislation (Article 20 (c) (i) of Reg. (EC) N° 1698/2005)	131.1	To what extent has the support helped farmers to implement rapidly and to respect demanding standards based on Community legislation?
37			131.2	To what extent has the support contributed to improving the competitiveness of the supported holdings?
38	132	Supporting farmers who participate in food quality schemes (Article 20 (c) (ii) of Reg. (EC) N° 1698/2005)	132.1	To what extent has the support contributed to improve the quality and the transparency of the production process for consumers?
39			132.2	To what extent has the support enhanced market access and market share and/or an added value of products for assisted farmers?
40			132.3	To what extent has the support contributed to improving the competitiveness of the agricultural sector?
41	133	Supporting producer groups for information and promotion activities for products under food quality schemes (Article 20 (c) (iii) of Reg. (EC) N° 1698/2005)	133.1	To what extent has the support contributed to increasing the market share of high quality products?
42			133.2	To what extent has the support contributed to raising consumers' awareness about high quality products?
43			133.3	To what extent has the support contributed to improving the competitiveness of the agricultural sector?
44	141	Supporting semi-subsistence agricultural holdings undergoing restructuring (Article 20 (d) (i) of Reg. (EC) N° 1698/2005)	141.1	To what extent has the support promoted enduring structural adjustment of semi-subsistence farms in new Member States?
45			141.2	To what extent has the support facilitated the move into the market for semisubsistence farms in new Member States?
46			141.3	To what extent has the support reduced the structural disparity between the agricultural sector in new Member States and the agricultural sector in EU-15 Member States?
47			141.4	To what extent has the support contributed to improving the competitiveness of the agricultural sector in the new Member States?
48	142	Supporting setting up of producer groups (Article 20 (d) (ii) of Reg. (EC) N° 1698/2005)	142.1	To what extent has the support enhanced the adaptation of productions to market requirements in the new Member States?
49			142.2	To what extent has the support reduced the structural disparity between the agricultural sector in the new Member States and the agricultural sector in EU-15 Member States?
50			142.3	To what extent has the support contributed to improving the competitiveness of the agricultural sector in the new Member States?
51	211	Natural handicap payments to farmers in mountain areas (Article 36 (a) (i) of Reg. (EC) N° 1698/2005)	211.1	To what extent have compensatory allowances contributed to ensuring continued agricultural land use in mountain areas?
52			211.2	To what extent have compensatory allowances contributed to the maintenance of a viable rural community in mountain areas?
53			211.3	To what extent has the scheme contributed to maintaining or promoting sustainable farming systems?
54			211.4	To what extent has the scheme contributed to maintaining the countryside and improving the environment?
55	212	Payments to farmers in areas with handicaps, other than mountain areas (Article 36 (a) (ii) of Reg. (EC) N° 1698/2005)	212.1	To what extent have compensatory allowances helped in ensuring continued agricultural land use in areas with handicaps, other than mountain areas?
56			212.2	To what extent have compensatory allowances contributed to the maintenance of a viable rural community in areas with handicaps, other than mountain areas?
57			212.3	To what extent has the scheme contributed to maintaining or promoting sustainable farming systems?

58			212.4	To what extent has the scheme contributed to maintaining the countryside and improving the environment?
59	213	Natura 2000 payments and payments linked to Directive 2000/60/EC (WFD) (Article 36 (a) (iii) of Reg. (EC) N° 1698/2005)	213.1	To what extent have compensatory allowances contributed to sustainable land management of Natura 2000 sites?
60			213.2	To what extent have compensatory allowances contributed to effective land management in river basin areas affected by the WFD?
61			213.3	To what extent have compensatory allowances contributed to safeguarding farming in these areas?
62			213.4	To what extent have compensatory allowances contributed to maintaining the countryside and improving the environment?
63	214	Agri-environment payments (Article 36 (a) (iv) of Reg. (EC) N° 1698/2005)	214.1	To what extent have agri-environmental measures contributed to maintaining or promoting sustainable farming systems?
64			214.2	To what extent have agri-environmental measures contributed to maintaining or improving habitats and biodiversity?
65			214.3	To what extent have agri-environmental measures contributed to maintaining or improving water quality?
66			214.4	To what extent have agri-environmental measures contributed to maintaining or improving soil quality?
67			214.5	To what extent have agri-environmental measures contributed to mitigating climate change?
68			214.6	To what extent have agri-environmental measures contributed to maintaining and improving landscapes and its features?
69			214.7	To what extent have agri-environmental measures contributed to improving the environment? Distinguish between the contribution of agri-environmental measures implemented as demanding, site-specific measures and less demanding measures which are widely applied.
70	215	Animal welfare payments (Article 36 (a) (v) of Reg. (EC) N° 1698/2005)	215.1	To what extent have the payments contributed to encouraging farmers to adopt high standards of animal husbandry which go beyond the relevant mandatory standards?
71			215.2	To what extent have the payments contributed to increasing welfare compatible animal husbandry?
72			215.3	To what extent have the payments contributed to maintaining or promoting sustainable farming systems?
73	216	Support for non-productive investments (Article 36 (a) (vi) of Reg. (EC) N° 1698/2005)	216.1	To what extent have supported investments contributed to the achievement of agri-environmental objectives?
74			216.2	To what extent have supported investments contributed to enhancing the public amenity value of Natura 2000 areas and/or other areas of high natural value?
75			216.3	To what extent have supported investments contributed to maintaining the countryside and improving the environment?
76	221	First afforestation of agricultural land (Article 36 (b) (i) of Reg. (EC) N° 1698/2005)	221.1	To what extent has the measure contributed to create significantly forestry areas in line with the protection of the environment?
77			221.2	To what extent has the measure contributed to creating sustainable managed forestry areas which contribute to maintaining the ecological functions of forests and the prevention of natural hazards and fires?
78			221.3	To what extent has the measure contributed to maintaining the countryside and improving the environment?
79	222	First establishment of agroforestry systems on agricultural land (Article 36(b) (ii) of Reg. (EC) N° 1698/2005)	222.1	To what extent have agroforestry systems contributed to increase the production of forestry products of high quality/ value?
80			222.2	To what extent have agroforestry systems contributed to creating sustainable managed areas which ameliorate the ecological systems of the areas affected?
81			222.3	To what extent have agroforestry systems contributed to maintaining the countryside and improving the environment?
82	223	First afforestation of non-agricultural land (Article 36 (b) (iii) of Reg. (EC) N° 1698/2005)	223.1	To what extent has the measure contributed to create significantly forestry areas?
83			223.2	To what extent has the measure contributed to creating sustainable managed forestry areas which contribute to maintaining the ecological functions of forests and the prevention of natural hazards and fires?
84			223.3	To what extent has the measure contributed to maintaining the countryside and improving the environment?
85	224	Natura 2000 payments (Article 36 (b) (iv) of Reg. (EC) N° 1698/2005)	224.1	To what extent has the scheme helped in ensuring continued forestry management in Natura 2000 areas?
86			224.2	To what extent has the scheme contributed to maintaining or promoting sustainable management of forestry land?
87			224.3	To what extent has the scheme contributed to maintaining the countryside and improving the environment?
88	225	Forest-environment payments (Article 36 (b) (v) of Reg. (EC) N° 1698/2005)	225.1	To what extent have high value forest eco-systems been maintained or enhanced by forest-environment payments?
89			225.2	To what extent have forest-environment payments contributed to maintaining or improving biodiversity?
90			225.3	To what extent have forest-environment payments contributed to maintaining or improving water quality?
91			225.4	To what extent have forest-environment payments contributed to preventing soil erosion?
92			225.5	To what extent have forest-environment payments contributed to combating climate change?
93			225.6	To what extent have forest-environment payments contributed to maintaining and improving landscape and its features?
94			225.7	To what extent have forest-environment payments contributed to improving the environment?
95	226	Restoring forestry potential and introducing prevention actions (Article 36 (b) (vi) of Reg. (EC) N° 1698/2005)	226.1	To what extent have the supported actions contributed to restore forestry potential in damaged forests?
96			226.2	To what extent have the preventive actions introduced contributed to the maintenance of forests?
97			226.3	To what extent have the supported actions contributed to increase the sustainable management of forestry land?
98			226.4	To what extent have the supported actions contributed to improving the environment?

99	227	Support for non-productive investments (Article 36 (b) (vii) of Reg. (EC) N° 1698/2005)	227.1	To what extent have supported investments contributed to maintaining or promoting sustainable forestry systems?
100			227.2	To what extent have supported investments contributed to enhancing the public amenity value of forest areas?
101			227.3	To what extent have the supported actions contributed to improving the environment and maintaining the countryside?
102	311	Diversification into non-agricultural activities (Article 52 (a) (i) of Reg. (EC) N° 1698/2005)	311.1	To what extent have supported investments promoted the diversification of farm households' activities towards non agricultural activities? Focus the analysis on the most important activities in this respect.
103			311.2	To what extent have supported investments promoted additional employment opportunities for farm households outside the agricultural sector?
104			311.3	To what extent have supported investments contributed to improving the diversification and development of the rural economy?
105			311.4	To what extent have supported investments contributed to improving the quality of life in rural areas?
106	312	Support for business creation and development (Article 52 (a) (ii) of Reg. (EC) N° 1698/2005)	312.1	To what extent has the support contributed to promote diversification and entrepreneurship? Focus the analysis on the most important activities.
107			312.2	To what extent has the support promoted additional employment opportunities in rural areas?
108			312.3	To what extent has the support contributed to improving the diversification and development of the rural economy?
109			312.4	To what extent has the support contributed to improving the quality of life in rural areas?
110	313	Encouragement of tourism activities (Article 52 (a) (iii) of Reg. (EC) N° 1698/2005)	313.1	To what extent has the measure contributed to increasing tourism activities? Distinguish between activities taking place on agricultural holdings and other activities.
111			313.2	To what extent has the measure promoted additional employment opportunities in rural areas?
112			313.3	To what extent has the measure contributed to improving the diversification and development of the rural economy?
113			313.4	To what extent has the measure contributed to improving the quality of life in rural areas?
114	321	Basic services for the economy and rural population (Article 52 (b) (i) of Reg. (EC) N° 1698/2005)	321.1	To what extent have the services provided contributed to improve the quality of life in rural areas? Distinguish between the different sectors concerned (such as commerce, health services, transport, IT ...).
115			321.2	To what extent have the services provided increased the attractiveness of the areas affected? Distinguish between the different sectors concerned (such as commerce, health services, transport, IT ...).
116			321.3	To what extent have the services contributed to reversing economic and social decline and depopulation of the countryside?
117	322	Village renewal and development (Article 52 (b) (ii) of Reg. (EC) N° 1698/2005)	322.1	To what extent has the measure contributed to improve the quality of life in rural areas? Distinguish between the different sectors concerned (such as commerce, health services, transport, IT, environment ...).
118			322.2	To what extent has the measure improved the attractiveness of rural areas? Distinguish between the different sectors concerned (such as commerce, health services, transport, IT, environment ...).
119			322.3	To what extent have the measure contributed to reversing economic and social decline and depopulation of the countryside?
120	323	Conservation and upgrading of the rural heritage (Article 52 (b) (iii) of Reg. (EC) N° 1698/2005)	323.1	To what extent has the measure maintained the attractiveness of rural areas?
121			323.2	To what extent has the measure contributed to the sustainable management and development of Natura 2000 sites or other places of high nature value and to environmental awareness of rural population?
122			323.3	To what extent has the measure contributed to improve the quality of life in rural areas?
123	331	A training and information measure for economic actors operating in the fields covered by axis 3 (Article 52 (c) of Reg. (EC) N° 1698/2005)	331.1	To what extent have supported training and information activities improved the human potential of rural population to diversify their activities towards non agricultural activities? Focus the analysis on the most important activities.
124			331.2	To what extent has the knowledge gained from supported training and information activities been used in the area affected?
125			331.3	To what extent have supported training and information activities contributed to improve the quality of life in rural areas?
126	341	A skills-acquisition and animation measure with a view to preparing and implementing a local development strategy (Article 52 (d) of Reg. (EC) N° 1698/2005)	341.1	To what extent have supported activities increased the capacities of rural actors for preparing, developing and implementing local development strategies and measures in the field of rural development?
127			341.2	To what extent have supported activities contributed to reinforcing territorial coherence and synergies between the measures intended for the broader rural economy and population?
128			341.3	To what extent have supported activities contributed to improve the quality of life in rural areas?
129	41	Implementing local development strategies as referred to in Article 62(1)(a) with a view to achieving the objectives of one or more of the three other axes defined in sections 1, 2 and 3 (Article 63 (a) of Reg. (EC) N° 1698/2005)	41.1	To what extent has the LEADER approach contributed to improving governance in rural areas?
130			41.2	To what extent has the LEADER approach contributed to mobilising the endogenous development potential of rural areas?
131			41.3	To what extent has the LEADER approach contributed to introduce multisectoral approaches and to promote cooperation for the implementation of rural development programmes?
132			41.4	To what extent has the LEADER approach contributed to the priorities of axis 1, 2 and 3?

133	421	Implementing cooperation projects involving the objective selected under point (a) (Article 63 (b) of Reg. (EC) N° 1698/2005)	421.1	To what extent has the support contributed to promoting cooperation and to encouraging transfer of best practices?
134			421.2	To what extent have cooperation projects and/or transfer of best practices based on the LEADER approach contributed to a better achievement of the objectives of one or more of the three other axes?
135	431	Running the local action group, acquiring skills and animating the territory as referred to in article 59 (Article 63 (c) of Reg. (EC) N° 1698/2005)	431.1	To what extent has the support increased the capacities of Local Action Groups and other partners involved for implementing local development strategies?
136			431.2	To what extent has the support contributed to increasing the capacity for the implementation of LEADER?
137	001	Horizontal	H.1	To what extent has the programme contributed to the realisation of Community priorities in relation to the renewed Lisbon strategy for growth and jobs with respect to: - the creation of employment opportunities? - ameliorating the conditions for growth?
138	002	Horizontal	H.2	To what extent has the programme contributed to promoting sustainable development in rural areas? In particular, to what extent has the programme contributed to the three priority areas for protecting and enhancing natural resources and landscapes in rural areas: - biodiversity and the preservation and development of high nature value farming and forestry systems and traditional agricultural landscapes? - water? - climate change?
139	003	Horizontal	H.3	To what extent has the programme integrated environmental objectives and contributed to the realisation of Community priorities in relation to - the Göteborg commitment to reverse biodiversity decline? - the objectives laid down in Directive 2000/60/EC establishing a framework for Community action in the field of water policy? - the Kyoto protocol targets for climate change mitigation?
140	004	Horizontal	H.4	To what extent has the programme contributed to achieving economic and social cohesion policy objectives with respect to: - reducing the disparities among EU citizens? - reducing territorial imbalances?
141	005	Horizontal	H.5	To what extent has the programme successfully targeted the particularity of the agricultural activities in the programming area with respect to: - the social structure of the programming area? - structural and natural conditions of the programming area?
142	006	Horizontal	H.6	To what extent has the programme successfully targeted the particular situation of the programme area e.g. depopulation or pressure from urban centres?
143	007	Horizontal	H.7	To what extent has the programme contributed to restructuring and modernisation of the agricultural sector?
144	008	Horizontal	H.8	To what extent has the programme contributed to further develop high quality and value added products?
145	009	Horizontal	H.9	To what extent has the programme contributed to promoting a strong and dynamic European agrifood sector?
146	010	Horizontal	H.10	To what extent has the programme contributed to promoting innovation in the European agrifood sector?
147	011	Horizontal	H.11	To what extent has the programme strengthened arrangements for partnerships between the regional, national and European level?
148	012	Horizontal	H.12	To what extent has the programme contributed to the promotion of equality between women and men?
149	013	Horizontal	H.13	To what extent has the programme ensured complementarity and coherence between the programme measures and actions financed by the Cohesion Fund, the European Social Fund, the European Fisheries Fund and the EAFRD?
150	014	Horizontal	H.14	To what extent has the programme maximised synergies between the axes?
151	015	Horizontal	H.15	To what extent has the programme contributed to an integrated approach to rural development?
152	016	Horizontal	H.16	To what extent has the technical support increased the capacities of the managing authorities and other partners involved for implementing, managing, controlling and evaluating rural development programmes?
153	017	Horizontal	H.17	To what extent has the European Network for Rural Development contributed to establish good rural development practice?
154	018	Horizontal	H.18	To what extent has the programme design been successful in avoiding deadweight and/or displacement?
155	019	Horizontal	H.19	To what extent has the programme design been successful in encouraging multiplier effects?

Table 4a: Overview on methods and sources in general

Aspects	Methods and Sources applied
Possible levels of assessment	Assessment at measure level
	Assessment at priority level
	Assessment at programme level
	Assessment at other programme specific level
Indicative data sources /collection	Primary data sources:
	Programme Monitoring data (administrative data-quantitative information)
	Programme Monitoring data (administrative data-qualitative information)
	Specific inventories for assessing environmental impacts
	Surveys with beneficiaries only
	Surveys with beneficiaries and non-beneficiaries
	Survey with other stakeholders, experts
	Interviews with beneficiaries only
	Interviews with beneficiaries and non-beneficiaries
	Interviews with other stakeholders, experts
	Focus groups with beneficiaries only
	Focus groups with beneficiaries and non-beneficiaries
	Focus groups with other stakeholders, experts
	Case studies
	Secondary data sources:
	FADN (Farm Accountancy Data network)
	Eurostat statistics
	National statistics
	Other statistical data
	Studies
Indicative assessment methodes	Basic analysis using descriptive statistics
	Statistical analysis using counterfactuals
	Analysis of treated and not treated areas
	Regional input-output econometric models
	System dynamics modelling (systemic view on complex cause-chain effects)
	GIS-based tools (observation of changes in territories)
	In-depth analysis through case study
	Documentation of opinions, preferences of actors through questionnaires, Opinion polls, interviews, focus groups

Table 4b: Overview on methods and sources related to assessment of impacts / common impact indicators

Aspects	Methodology applied (please set a X)	Economic growth	Employment creation	Labour productivity	Reversing biodiversity decline	Maintenance of high natural value farming and forestry areas	Improvement in water quality	Contribution to combating climate change
Level of impact	Assessment of impacts at measure level							
	Assessment of impacts at programme level (adding-up of measure related data)							
	Assessment of impacts at programme level (synthetic estimation at programme level)							
	Assessment at other programme specific level (e.g. schemas)							
Data sources /collection	FADN (Farm Accountancy Data network)							
	Additional statistical data and surveys to complement FADN							
	Purchasing Power Parities compiled by Eurostat							
	Specific inventories for assessing environmental impacts							
	Monitoring data (quantitative information)							
	Surveys with beneficiaries							
	Surveys with beneficiaries and non-beneficiaries							
	Surveys with other stakeholders and experts							
	Interviews with beneficiaries							
	Interviews with beneficiaries and non-beneficiaries							
	Interviews with other stakeholders, experts							
	Focus groups with beneficiaries							
	Focus groups with beneficiaries and non beneficiaries							
	Focus groups with other stakeholders, experts							
	Case studies							
	Monitoring data (qualitative information)							
	Others sources of qualitative data (please specify)							
Assessment methodes	Basic analysis using descriptive statistics							
	Statistical methods to compare the performance of beneficiaries with equivalent non-beneficiaries (counterfactuals)							
	Statistical methods to compare the performance of programme areas with equivalent non-programme areas (counterfactuals)							
	Regional input-output econometric models							
	System dynamics modelling (systemic view on complex cause-chain effects)							
	GIS-based tools (observation of changes in territories)							
	In-depth analysis through case studies							
	Documentation of opinions, preferences of actors through Questionnaires, Opinion polls, interviews, focus groups							
	Direct programme effects on programme beneficiaries (direct effect of the programme on farms, companies)							
	Explicit calculation of net-effects							
Dimension of effects	Indirect programme effects occurring at the level of direct beneficiaries (deathweight loss, leverage effects)							
	Indirect programme effects on other non-beneficiaries (individuals/farms, companies in terms of substitution effects, displacement effects, multiplier effects)							

Table 5: Progress of Result Indicators related to axes (Target/Performance comparison)

Please add Programm specific Result Indicators if any

Axis /Objective	Common Result Indicator		Target 2013	Value MTE	If results are reported at measure level, indicate the value per measure (e.g. 121: € 12.5 million ; 123: € 1.4 million etc.)	Comment
1 Improving the competitiveness of the agricultural and forestry sector	1	Number of participants that successfully ended a training activity related to agriculture and/or forestry				
	2	Increase in GVA in supported holdings/enterprises ('000 EUR)				
	3	Number of holdings / enterprises introducing new products and/or new techniques				
	4	Value of agricultural production under recognized quality label/standards (millions of euros)				
	5	Number of farms entering the market				
2 Improving the environment and the countryside through land management	6	Area under successful <u>agricultural land management</u> contributing to biodiversity, water quality, mitigating climate change, soil quality, avoidance of marginalisation and land abandonment (ha)				
	6	Area under successful <u>forestry land management</u> contributing to biodiversity, water quality, mitigating climate change, soil quality, avoidance of marginalisation and land abandonment (ha)				
3 Improving the quality of life in rural areas and encouraging diversification of economic activities	7	Increase in Non-agricultural gross value added in supported business ('000 EUR)				
	8	Gross number of jobs created				
	9	Additional number of tourist visits	Number of day visitors			
			Number of overnight stays			
	10	Population in rural areas benefiting from improved services (unique number of persons)				
	11	Increase in internet penetration in rural areas (unique no of persons)				
	12	Number of participants that successfully ended a training activity in the field of axis 3 (unique no of persons)				

Please add programm specific impact indicators if mentioned in the report

[illegible]

Table 7: Overview Conclusions and Recommendations per measure

Code	Measure	Main Conclusions	Main Recommendations
111	Vocational training and information actions		
112	Setting up of young farmers		
113	Early retirement		
114	Use of advisory services		
115	Setting up of management, relief and advisory services		
121	Modernisation of agricultural holdings		
122	Improvement of the economic value of forests		
123	Adding value to agricultural and forestry products		
124	Cooperation for development of new products, processes and technologies in the agriculture and food sector and in the forestry sector		
125	Infrastructure related to the development and adaptation of agriculture and forestry		
126	Restoring agricultural production potential damaged by natural disasters and introducing appropriate prevention actions		
131	Meeting standards based on Community legislation		
132	Participation of farmers in food quality schemes		
133	Information and promotion activities		
141	Semi-subsistence farming		
142	Producer groups		
211	Payments to farmers in areas with handicaps, mountain areas (Article 36 (a) (i) of Reg. (EC) N. 1698/2005)		
212	Payments to farmers in areas with handicaps, other than mountain areas (Article 36 (a) (ii) of Reg. (EC) N. 1698/2005)		
213	Natura 2000 payments and payments linked to Directive 2000/60/EC (WFD)		
214	Agri-environment payments		
215	Animal welfare payments		
216	Non-productive investments		
221	First afforestation of agricultural land		
222	First establishment of agroforestry systems on agricultural land		
223	First afforestation of non-agricultural land		
224	Natura 2000 payments		
225	Forest-environment payments		
226	Restoring forestry potential and introducing prevention actions		
227	Non-productive investments		
311	Diversification into non-agricultural activities		
312	Business creation and development		
313	Encouragement of tourism activities		
321	Basic services for the economy and rural population		
322	Village renewal and development		
323	Conservation and upgrading of the rural heritage		
331	Training and information for economic actors operating in the fields covered by Axis 3		
341	Skills acquisition, animation and implementation		
41	Implementing local development strategies		
421	Implementing cooperation projects		
431	Running the local action group, acquiring skills and animating the territory as referred to in article 59		

Staff @ Evaluation Helpdesk



WIMMER Hannes
Lang. : DE, EN, IT

+32 (0) 2 736 18 90
+32 (0)476 880 469

hannes@ruralevaluation.eu



TVRDONOVA Jela
Lang. : SK, CZ, EN

+32 (0) 2 736 18 90
+ 32 (0)498 794 492

jela@ruralevaluation.eu



VAN SOETENDAEL Margot
Lang. : NL, EN, FR, IT, ES

+32 (0) 2 736 18 90
+32 (0)479 733 948

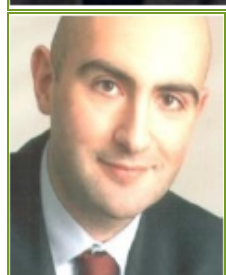
margot@ruralevaluation.eu



RESCH Andreas
Lang. : DE, EN

+ 43 1 544 07 80 – 36
+ 43 699 1265 0045

andreas@ruralevaluation.eu



SANOPOULOS Angelos
Lang.: GR, EN, DE

+ 43 1 544 07 80 – 36
+ 43 650 5490090

sanopoulos@metis-vienna.eu



European Evaluation Network
for Rural Development

Evaluation Helpdesk

260 Chaussée St Pierre – B-1040 Brussels

Tel: +32 (0)2 736 18 90

E-mail: info@ruralevaluation.eu

<http://enrd.ec.europa.eu/evaluation>