



European Evaluation Helpdesk for the CAP

Draft Annual Work Programme 2022

Olivier Chartier
Hannes Wimmer

Expert Group for Monitoring and Evaluating the CAP, 17 December 2021

POWERED BY



Content



Introduction

Objectives and tasks

Needs

AWP 2022



Leader of the ongoing
"Framework contract for
the evaluation studies of
the CAP. synthesis and
cross-thematic issues"

Holistic evaluation
competencies covering all
CAP objectives and
instruments from both EAGF
and EAFRD CAP funds

Large company (> 500
employees) headquartered
in Brussels with a long track
record in delivering support
services to the EC

Large network including
thematic and geographic
experts and academics,
with participation in several
Horizon 2020 projects



Leader of the ongoing
"European Evaluation
Helpdesk for rural
development"

Specific expertise in Pillar 2
evaluation; experience in
conducting evaluations
related to the third general
CAP objective

Specialised company with
more than 12 years of
experience in running the
evaluation helpdesk for DG
AGRI

Network of geographic
experts with well-established
relationships with Member
States' Managing Authorities

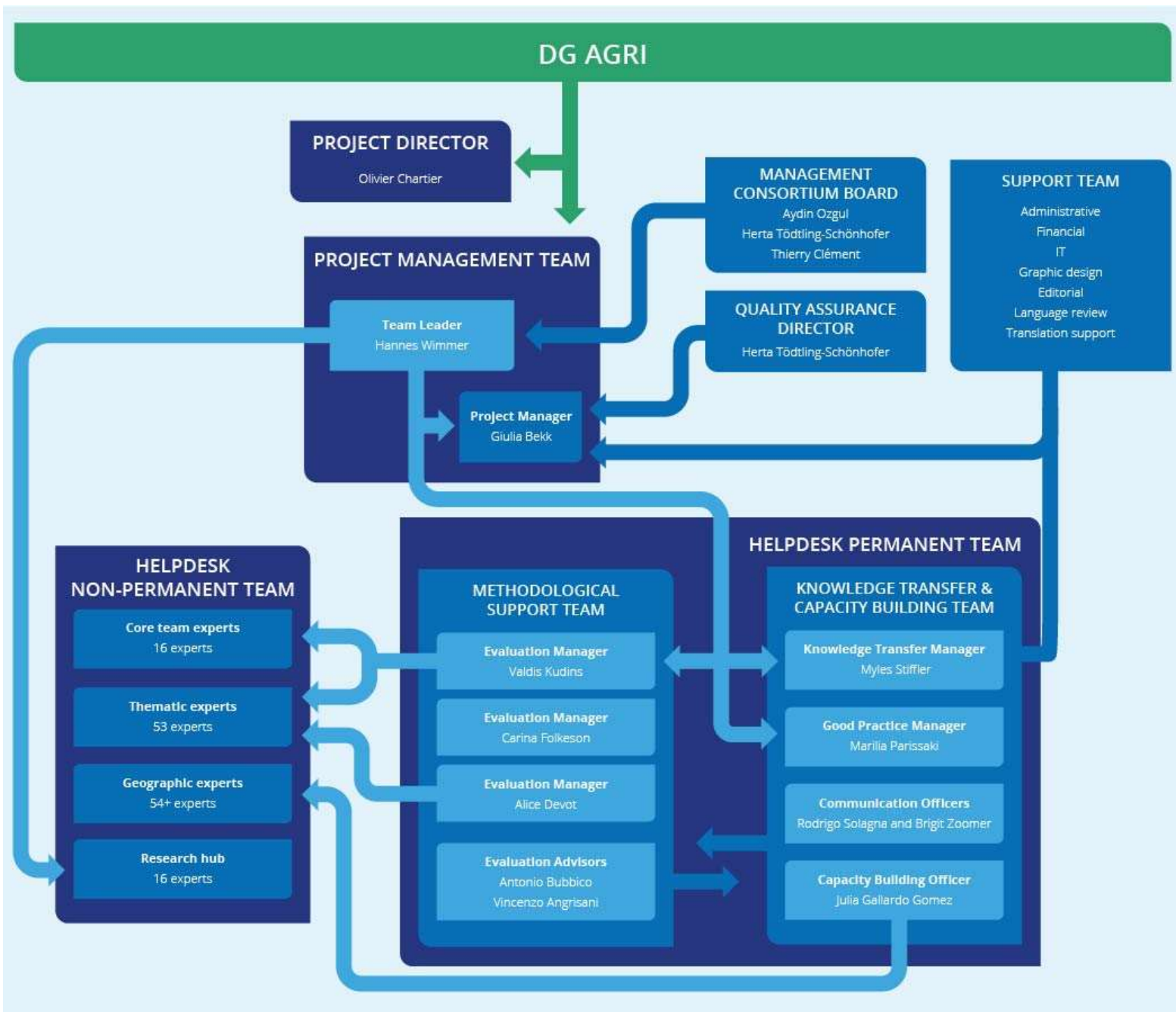


Leader of the ongoing
"Framework contract for
the evaluation of CAP
measures contributing to
the general objective of
viable food production"

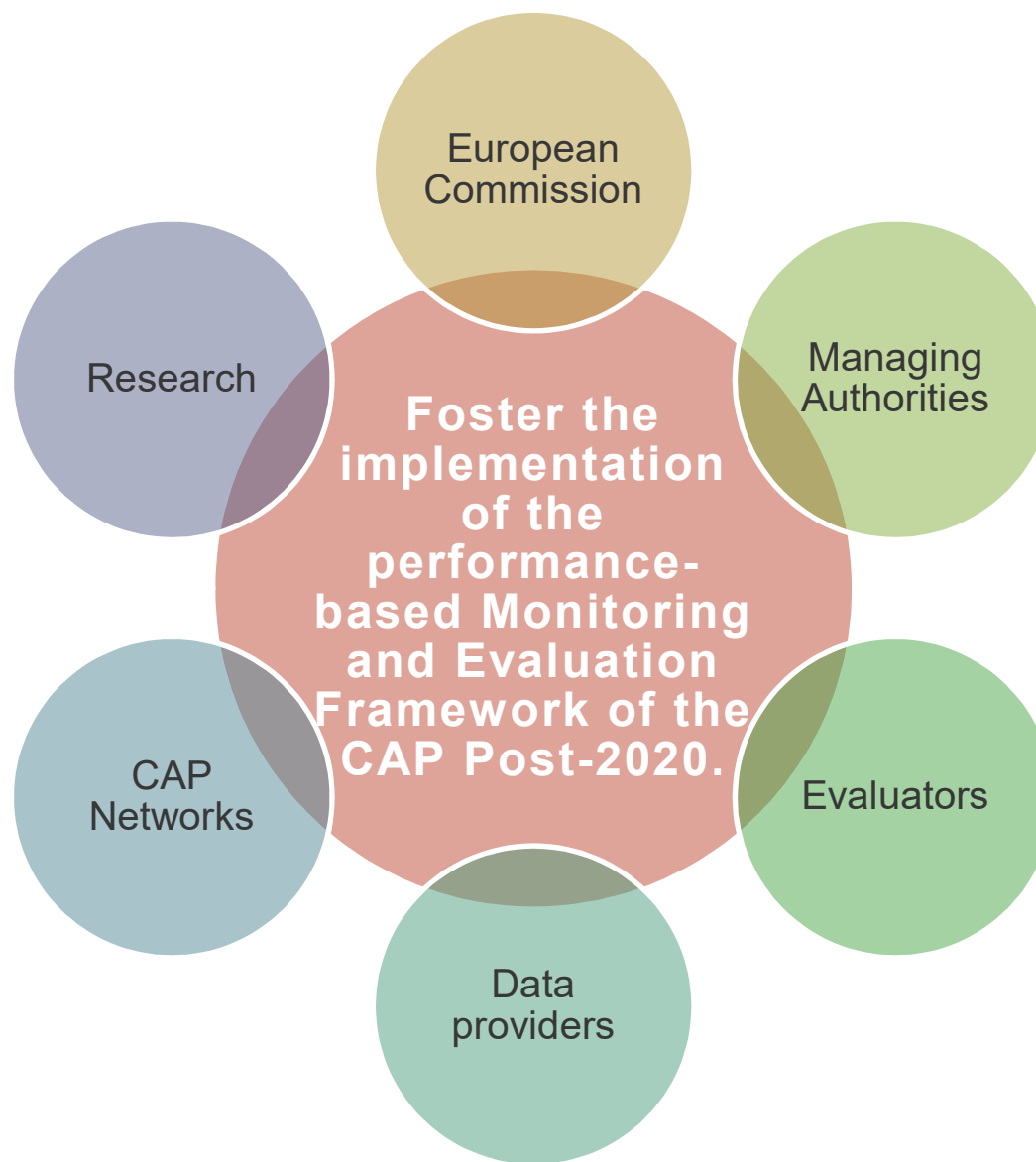
Specific expertise in Pillar 1
evaluation; experience in
conducting evaluations
related to the first and second
general CAP objectives

Specialised company with
more than 15 years of
experience in implementing
evaluation studies for DG
AGRI

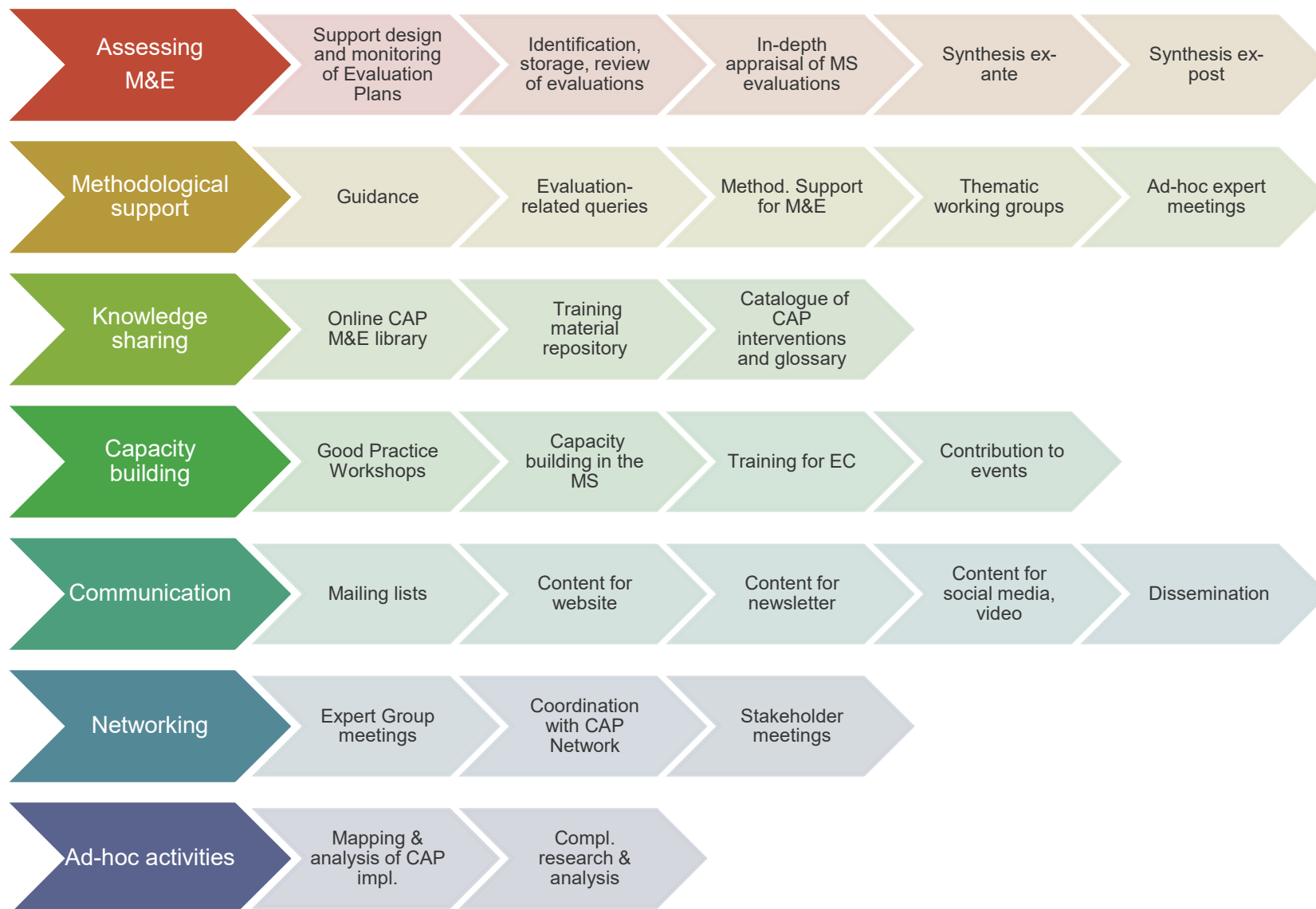
In-house CAP evaluation
experts and access to a
large network of thematic
and geographic experts



Overall objective and target groups



Tasks





Draft Annual Work Programme 2022 – selected / key activities

1. Guidance and methodological support to Member States
2. Knowledge sharing
3. Analytical tasks

→ Your feedback on the suggested topics is very welcome!

POWERED BY





1. Guidance and methodological support to Member States

POWERED BY





Guidance for Member States

Suggested topics for 2022:

- *Evaluation Plan as tool to steer CAP evaluations (Q1-Q4)*
- *Data and methods for assessing the net impact of the CAP on Environment and **climate-related objectives** (SO d, e, f) (Q2-4)*
 - focus on ‘most difficult’ indicators (e.g. nutrient leakage, farm bird index)
 - focus on Pillar 1 types of interventions

Guidance
documents

2

Thematic
Working
Groups



Guidance for Member States

Other possible topics:

- *Data and methods to assess **GAEC***
- *Guidance linked to **Green Deal***
- *Data and methods for assessing the net impact of the CAP objectives related to **food security** (SO a, b, c)*
- *Data and methods for assessing the net impact of the CAP on objectives related to **socio-economic fabric** (SO g, h, i)*
- *Data and methods for assessing **specific CAP aspects** (Leader, innovation, CAP Networks, Technical Assistance)*

2

Thematic
Working
Groups

Guidance
documents



Capacity building/Peer learning in Member States

Suggested topics:

- ***Evaluation plan***

- Exchange of key lessons and to develop features of the evaluation plan
- Focus on Pillar 1 evaluation experience
- Support to Member States to assess data gaps/needs and develop strategies to address data-gaps
- Set-up of database with key information on EPs

- ***Free choice of topic for a peer-learning event, e.g. to focus on specific technical aspects or wider evaluation aspects***

2 capacity
buildings
per MS

Feedbacks
on trainings

1
database
with key
info on EPs

Helpdesk for evaluation queries

EUROPEAN
EVALUATION
HELPSDESK
FOR THE CAP



Objectives:

- **Replying to evaluation-related queries**
 - can be sent in any EU language!
- **Sharing of Frequently Asked Questions**
 - through webpage
 - Other means (e.g. capacity buildings, newsletter etc.)

Replies
within
15 days

1
database
for queries

Regular
FAQ
updates



2. Knowledge sharing

POWERED BY



Good Practice Workshops



Suggested topics for 2022:

- *Assessment of **environmental and climate-related CAP objectives**, focus on water quality, soil or biodiversity impact.*
- *Evaluation of **sectoral interventions** (e.g. F&V): methodologies, data availability and data-needs*
- *Methodology and data for **BISS evaluation**: taking stock from past experience at EU level, implication for evaluation at Member States level*

3 Good
Practice
Workshops

Good Practice Workshops



Other possible topics:

- *Assessment of **AKIS** / innovation / EIP*
- ***Ex ante evaluation** of the CAP-Strategic Plans, good practices, lessons learned*
- *Assessment of **risk management***
- ***Food supply chain:** practices in quantifying the distribution of value added along the food chain*

3 Good
Practice
Workshops



Collection & review of evaluations

Objectives

- **Collect, review and share Member States' evaluations**
- **Summarise relevant evaluations**
- **Select evaluations for in-depth appraisal**
- **Provide feedback on appraisals**

Further information:

- *Link to [Member States completed evaluations 2014-2022](#)*

1

database
with
evaluations

English
summaries
of relevant
evaluations

30

quality
appraisals

Catalogue of CAP interventions



EUROPEAN
EVALUATION
HELPDESK
FOR THE CAP



Objectives

- **Collect all interventions planned and described by Member States in CAP Strategic Plan**
- **Categorise interventions (objective, type, sector, farm practice etc.)**
- **Translate in EN**
- **Share through digital database of CAP interventions on webpage**

Searchable
database of
CAP interv.



Communication and dissemination

Objective

- **Increase outreach of the Helpdesk activities within European CAP Network**
- **Dissemination of CAP evaluation findings**

3
newsletters

Examples of topics in 2022:

- *New CAP Evaluation Helpdesk support services publicity*
- *Understanding the PMEF framework and its elements*
- *Evaluation Plan as tool to steer CAP evaluations*
- *Ex-ante evaluation of the CAP Strategic Plans*

Website,
social
media

Event-
contrib.



3. Analytical tasks

POWERED BY



Mapping and analysis of the implementation of the CAP



Objectives

- **Analysing Member States' intervention logic, delivery choices and the motivation behind them**
- **Assessment of the joint effort in terms of**
 - expected results and effects on CAP objectives
 - potential contribution to other EU policies and strategies (e.g. Green deal, Farm2Fork).

Overview
of implem.
choices

Typology of
MS's focus
on CAP
objectives



Synthesis of ex-ante evaluations

Objective

- **Analysing and synthetising the ex-ante evaluations of the CAP Strategic Plans**

11
synthesis
questions

Focus

- Synthetise Member States' evaluation findings
- Assessment of overall quality
- Identification of good practices and areas for improvements
- Answering of 11 synthesis questions (covering the evaluation criteria)
- Conclusions on contribution towards CAP Specific Objectives

conclusions



Methodological support for DG AGRI's M&E activities

Examples of topics

- *Use of meta-evaluation for assessing CAP interim impacts (how to collect and compute data from national evaluation at EU level)*
- *Synthesis of research papers to identify specific methods to be used for CAP assessment of income support*
- *Contributions to EU policies and strategies (Green Deal, Farm to fork)*
- *Feasibility of using cost benefit analysis and methodology for assessing the efficiency of CAP interventions*
- *Review of the sampling schedules and the reporting requirements stemming from other relevant legislation (e.g. the Water Directive), with a view to helping synchronise assessment of indicators and planning of evaluations with other reporting requirements*

2

method.
support
activities

topics
can be also
adapted
and tackled
under other
task

Methodological support for DG AGRI's M&E activities



2

method.
support
activities

Ideas for additional studies or working groups

- *Assessing how income support (BISS and couple support) influences farm practices in relation to environmental and climate objectives*
- *Developing an analytical framework for assessing innovative eco-schemes practices (e.g. certification schemes, integrated production)*
- *Impact of the COVID-19 on EU agri-food sector and CAP performance assessment*
- *Testing satellite data for analysing environmental effects*
- *Feasibility of experimental approaches to assess net impacts of the CAP*
- *Use of coefficients to estimate net impacts of the CAP on environment (interrelation with JRC-work)*
- *Mapping of data-availability/gaps on selected indicators*

topics
can be also
adapted
and tackled
under other
task



Q&A and next steps

1. What are your needs and priorities?

- Please send us your comments in writing by 23 December or*
- contact us directly if you wish to discuss further questions, observations, ideas.*

2. Fine-tuning and finalisation of Annual Work Programme in Q1/2022



Thank you for your attention!

European Evaluation Helpdesk for the CAP

Tel. +32 2 7375130

E-mail info@ruralevaluation.eu

<http://enrd.ec.europa.eu/evaluation>

Follow us on



ENRD_EVALUATION