

agritourism **cross compliance** water
assets CAP rural people safety
leader *cohesion* community programs development
best practice cooperation climate young entrepreneurs
farming *monitoring* opportunities innovation biodiversity
integrated approach forests regions **women** landscape rural areas
europa environment

Rural Development through web 2.0

The National Rural Network web site

[What is it all about?]

The Rural Development Network

web site is:

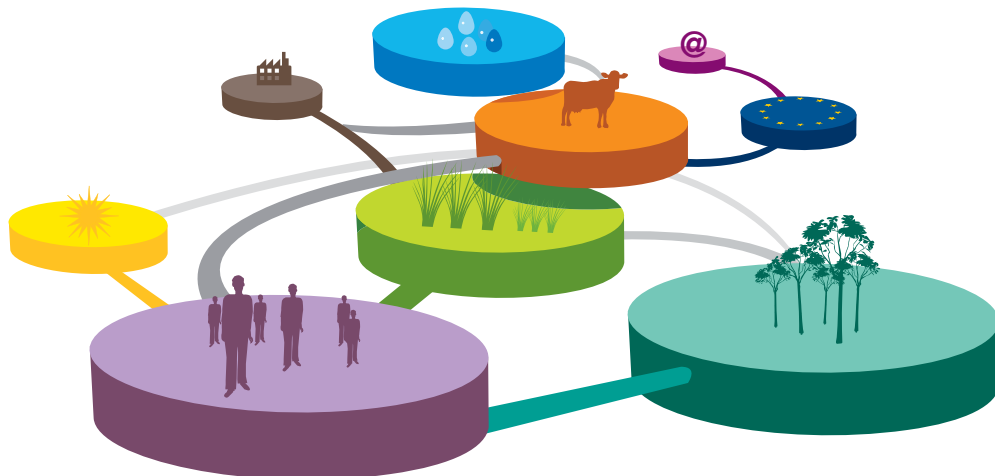
A COMMUNICATION TOOL, BOTH TRADITIONAL AND INNOVATIVE

A FLEXIBLE SERVICE ORIENTED TO USER NEEDS

A COOPERATION-BASED PROJECT IMPLEMENTED THROUGH A NETWORK OF RELATIONSHIPS

A TOOL ABLE TO CONVERT LIABILITIES INTO ASSETS BY INVOLVING HUMAN, FINANCIAL AND SOCIAL RESOURCES

A TOOL ABLE TO ENSURE THE INFORMATION FLOW



[Our services]

Monitoring of Rural Development Programs

On-line forum related to thematic contents

Presentation of events on rural development

The focus on programs and related activities

S.O.S. for bees - service on bee emergency

Members reserved area

[Figures]

Visitors overview:

from October 2008 to October 2009

108.320	Visits
45.261	Absolute Unique Visitors
748.395	Page views
8,01	Average Page Views

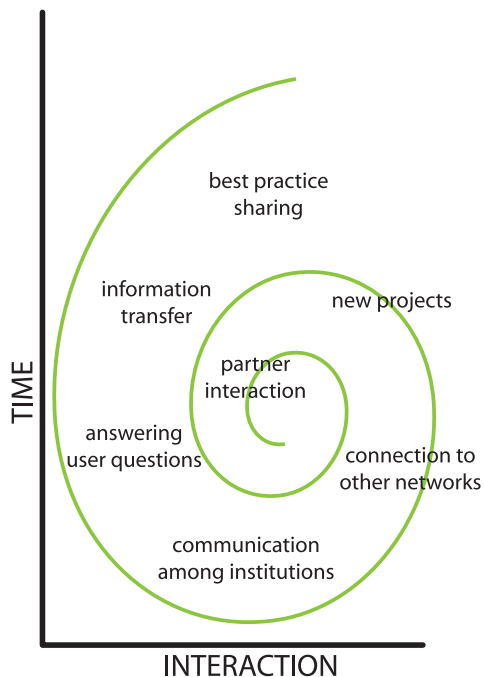
[Most wanted]

List of the most wanted topics

LEGISLATION
DOCUMENTS
SOS FOR BEES
LEADER APPROACH
REGIONS
ENVIRONMENT
EVENTS
RURAL AREAS

[How it grows]

A cooperation-based web project grows thanks to time and interaction



[Surfing through the topics]



AGRICULTURE IS CHANGING. HOW TO GET THE NEWS: CLICK AND FIND

AGRICULTURE IMPROVING QUALITY OF LIFE	→	LANDSCAPE
TERRITORY CONNECTED TO SOCIAL FUNCTIONS	→	RURAL AREAS
RURAL FARMING AND SIMPLIFICATION	→	YOUNG ENTREPRENEURS
SUSTAINABLE RURAL DEVELOPMENT	→	ENVIRONMENT
RESEARCH AND INNOVATION	→	INTEGRATED APPROACH/BEST PRACTICES
AGRICULTURE SAFEGUARDING COMMUNITY	→	SAFETY AND QUALITY

KNOWLEDGE AND TRAINING THROUGH INFORMATION

FOR YOUNG PEOPLE	→	THE SHOWCASE OF OPPORTUNITIES
FOR WOMEN AND ENTERPRISE	→	ON-LINE CONSULTING SERVICES
FOR INSTITUTIONS	→	SUPPORT TO REGIONAL ADMINISTRATIONS

THE NETWORK PHILOSOPHY: FROM MULTIMEDIA APPROACH TO SOCIAL NETWORK

NETWORKS MULTIPLY RESULTS: THEY SPREAD AND INCREASE KNOWLEDGE VALUE
NETWORKS CREATE CONNECTIONS: THEY BRING PEOPLE AND IDEAS TOGETHER

Editorial staff

Paola Lionetti - Editor in- chief
p.lionetti@politicheagricole.gov.it

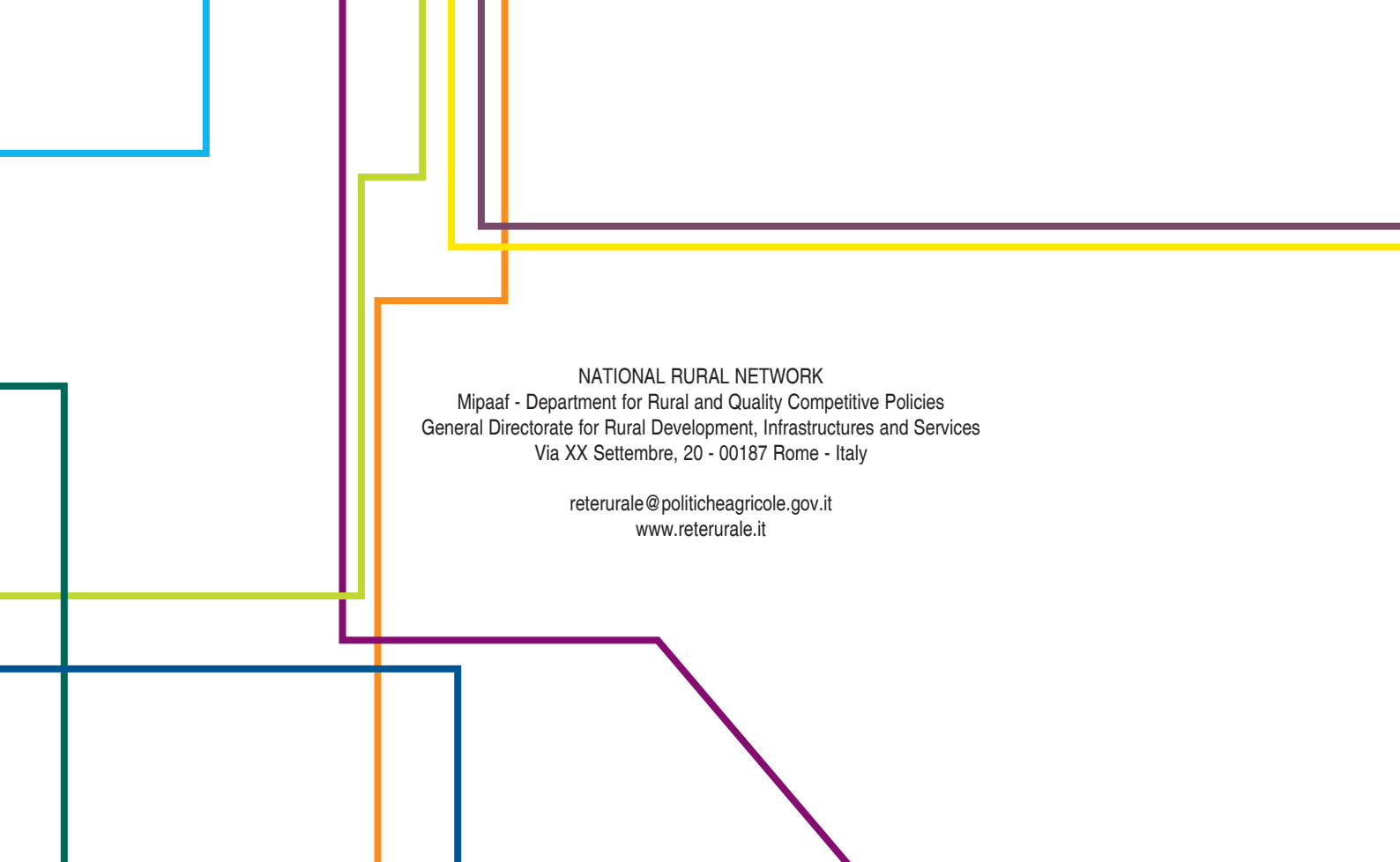
Mario Cariello - Webmaster / Communication
m.cariello@politicheagricole.gov.it

Fabrizio Soddu - Editor
f.soddu@politicheagricole.gov.it

Paola Gonnelli - Editor
p.gonnelli@politicheagricole.gov.it

Roberta Ruberto - Designer /Communication
r.ruberto@politicheagricole.gov.it

Valentina Longo - Legal expert
v.longo@politicheagricole.gov.it



NATIONAL RURAL NETWORK
Mipaaf - Department for Rural and Quality Competitive Policies
General Directorate for Rural Development, Infrastructures and Services
Via XX Settembre, 20 - 00187 Rome - Italy

reterurale@politicheagricole.gov.it
www.reterurale.it



www.reterurale.it