



**gLOCAL**  
EVALUATION WEEK  
2022

# Defining a people-centered meaningful evaluation framework for the assessment of advisory performances

Simona Cristiano, Patrizia Proietti



## CAP 2023-2027

### Create a regional/national innovation ecosystem

**Art. 15 e 78 (REG. (UE) 2021/2115)**

- ✓ **Advice** to support farmers/forestry and other CAP beneficiaries **included in CAP plans**
- ✓ **All advisors must be integrated within AKIS in an inclusive way**, to be able to cover the economic, environmental and social dimensions and provide up-to-date technological and scientific information developed by R&I
- ✓ **Advisors should be impartial** (no conflict of interest), adequately trained and able to **provide support for innovation**, in particular for the preparation and implementation of EIP operational group projects.

- Improving knowledge flows and strengthening links between research and practice
- strengthening the role of agricultural advisory services and their integration within AKIS
- improvement of interactive innovation processes





**Strategies, policy mechanisms and instruments** to promote and support the effective enhancement and integration of the advisors

## Integration of advisory services within the AKIS

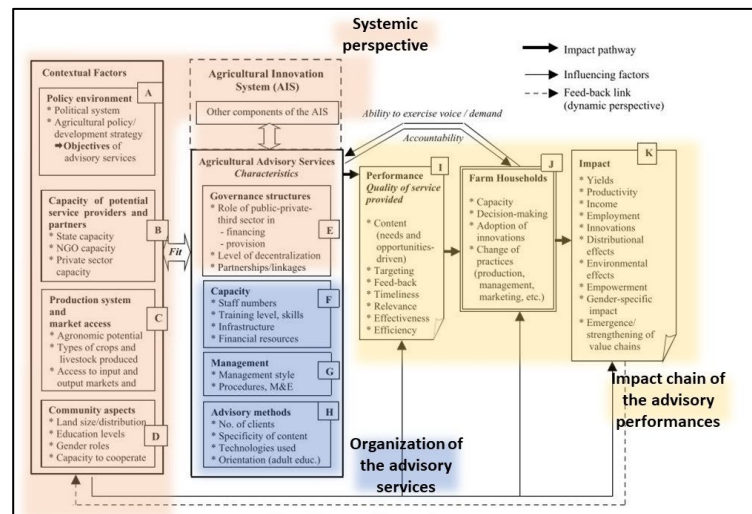
**Areas and approaches of assessment**

**Advisors perception** about the need/opportunity to better integrate the AKISs





## Definition of a framework for the assessment of professional performance



# Why a professional performance assessment tool?



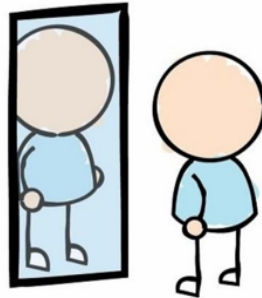


## PURPOSE OF MONITORING AND EVALUATION

**NOT TO JUDGE**



**REFLECT TO  
IMPROVE**



Deepen one's personal growth and/or professional development

*Gaining awareness in ourselves allows us to change and create new situations*



A **professional performance assessment tool is needed** to engage the user in reflection and observation, to inform what he or she does, fuelling awareness and the capacity to create something new.



Defining a **practicable framework and tools** to allow farm advisors **assessing their own performances** and engaging in **precision learning pathways**

- *Context sensitive:*
  - Based on actual needs for advisory services
  - Reflecting/Addressing the diversity of farming systems
  - Relevant for/Coherent to the policy context (EU CAP)
  -
- *Significant for potential users*
  - Advisors
  - Farmers
  - Policy makers
- *Exhaustive in terms of evaluando*
  - Quality Performances
  - Effectiveness on farming systems



- Complexity of AKISs
- Plurality of services
- Plurality of farming systems across countries
- Common policy but different CAP programmes' intervention logics

*Context*

- Influenti
- Numerosity of advisory activities
- Numerosity of farmers and other potential users of advisory services
- Non-linear pathway of effects on farms and on farming systems/AKISs
- No baseline data

*Advisory*



## Desk research

## Focus Groups with potential users

### Exhaustiveness

- Robust theoretical background on **quality criteria for advisory services quality performances and effectiveness**

### Context sensitiveness

- Survey on advisory services & farmers
- CAP framework
- Desk research on context a
- Desk research on topics of advisory services provided to farmers

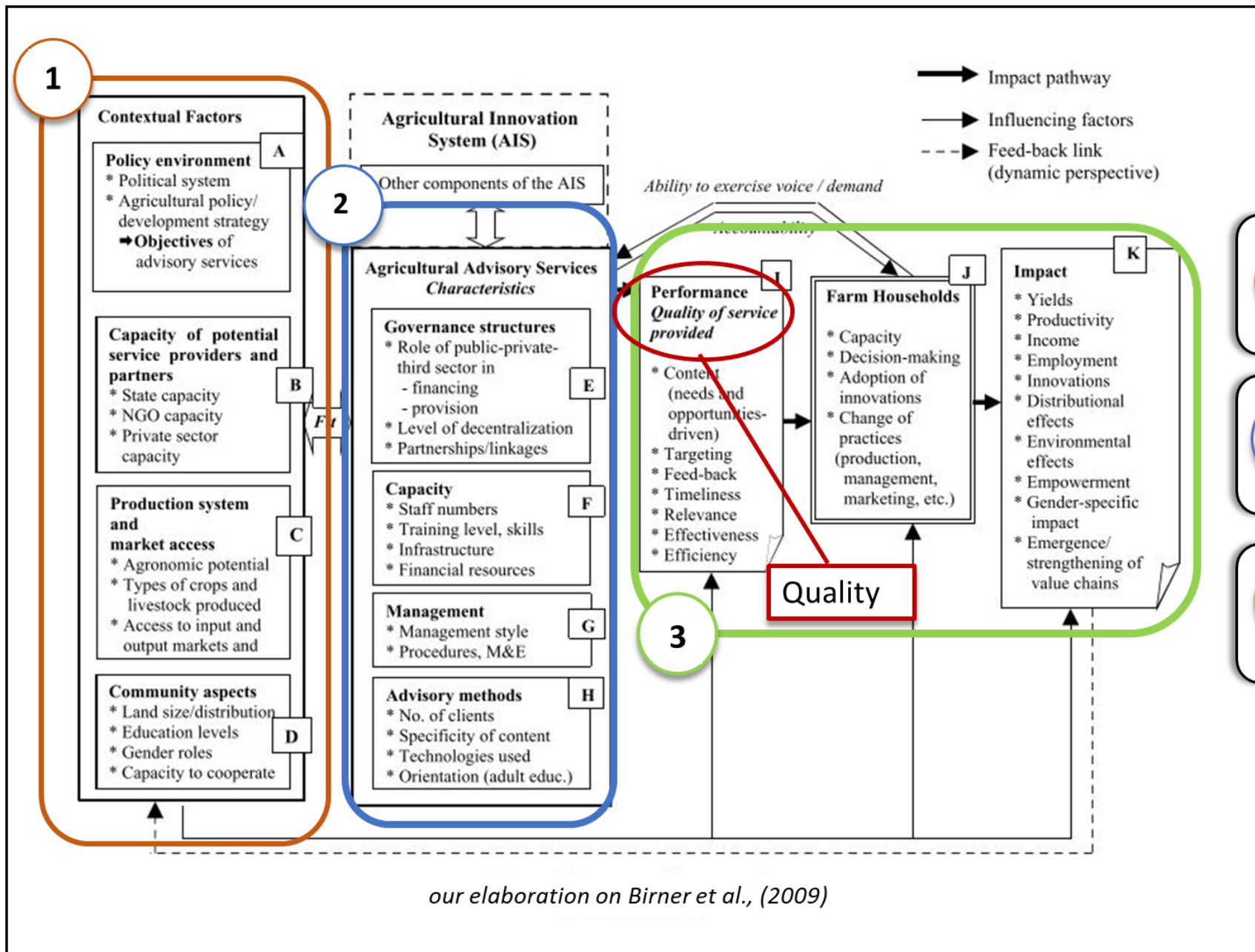
### Significancy of framework

- Based on potential users expectations on quality criteria and effectiveness
- Criteria Valuing set on country basis





# Theoretical background

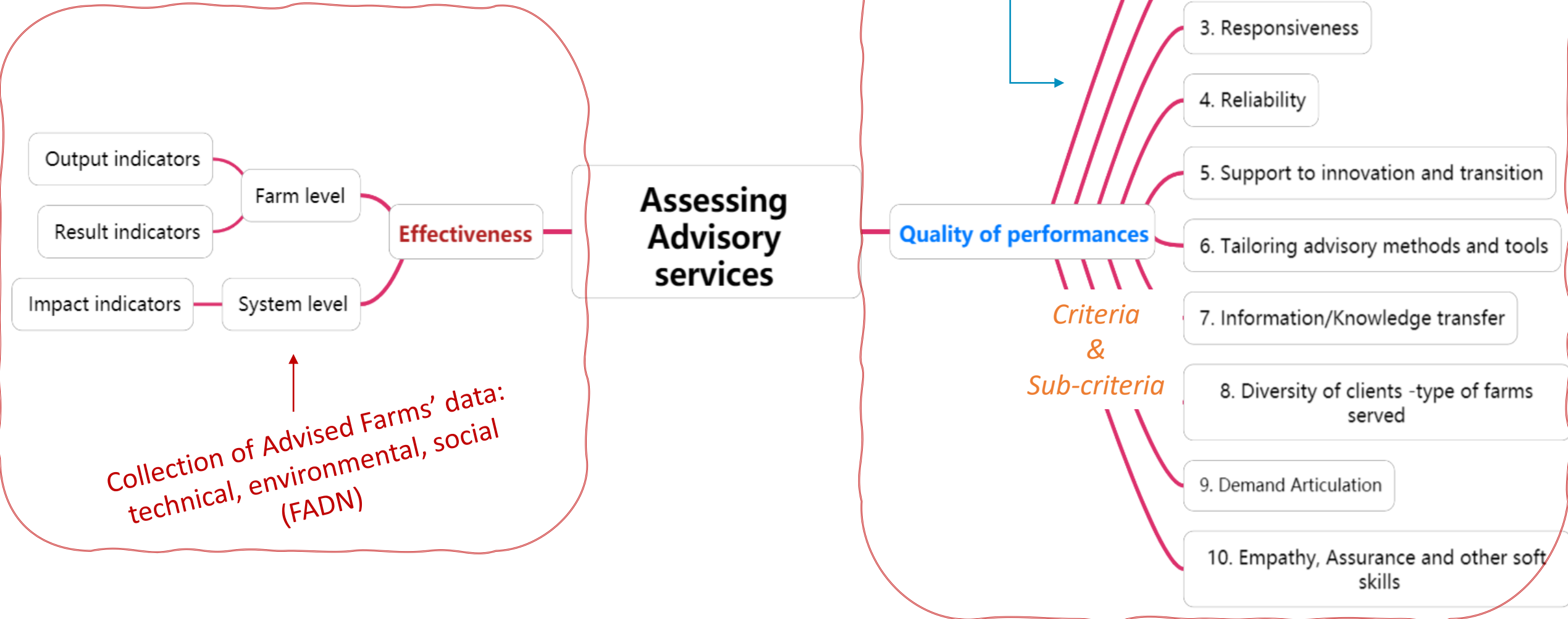


our elaboration on Birner et al., (2009)



# Co-defining the evaluando ...

What is significant to assess &  
How do you value it ?



# Performance Assessment

**gLOCAL**  
EVALUATION WEEK  
2022

**1. Relevance** - Contents are Relevant for farmers/clients (Advisory Contents are need and opportunities driven)

Use of mechanisms to assess needs or identify opportunities and for guided demand planning

*Standard values*

Advisor

Farmer

Policy maker

Assessment

Actual score

Actual score

Actual score

Actual overall Performance:  $SQ_i = \sum_{j=1}^K (P_{ij} - E_{ij})$

Actual overall Performance is based on the **balanced scores** attributed by the three users



- Periodic/Systematic survey by concerned advisor, farmer and policy maker
- Well-linked to competencies/skills to meliorate vs precision learning
- Triangulation across the users:
  - Questionnaire for advisor
  - Questionnaire for farmer
  - Questionnaire for policy maker
- Based on a robust methodology: not just self-assessment

Area of Performance	Assessment criterion	Questions		Answer	Score	Assessemnt
1 Relevance of the advisory services	Contents are Relevant for farmers/clients (Advisory Contents are need and opportunities driven)	Q1.1	How frequently do you put in use surveying tools/procedures and methods to assess the needs for advisory services of your clients?	<input type="checkbox"/> Almost always (after every service) <input type="checkbox"/> Often <input type="checkbox"/> Sometimes <input type="checkbox"/> Seldom <input type="checkbox"/> Never	5 4 3 2 1	$SQ_i^K = \sum_{j=1}^K (P_{ij} - E_{ij})$
2 Effectiveness and advisory contents	Effective in practical terms, for solving problems or reaching specific objectives	Q2.1	How do you rate your effectiveness and advisory contents on support for decision making?	<input type="checkbox"/> Very Good <input type="checkbox"/> Good <input type="checkbox"/> Acceptable <input type="checkbox"/> Poor <input type="checkbox"/> Very Poor	5 4 3 2 1	$SQ_i^K = \sum_{j=1}^K (P_{ij} - E_{ij})$
		Q2.2	How do you rate your effectiveness and advisory contents on Transfer of knowledge?	<input type="checkbox"/> Very Good <input type="checkbox"/> Good <input type="checkbox"/> Acceptable <input type="checkbox"/> Poor <input type="checkbox"/> Very Poor	5 4 3 2 1	$SQ_i^K = \sum_{j=1}^K (P_{ij} - E_{ij})$

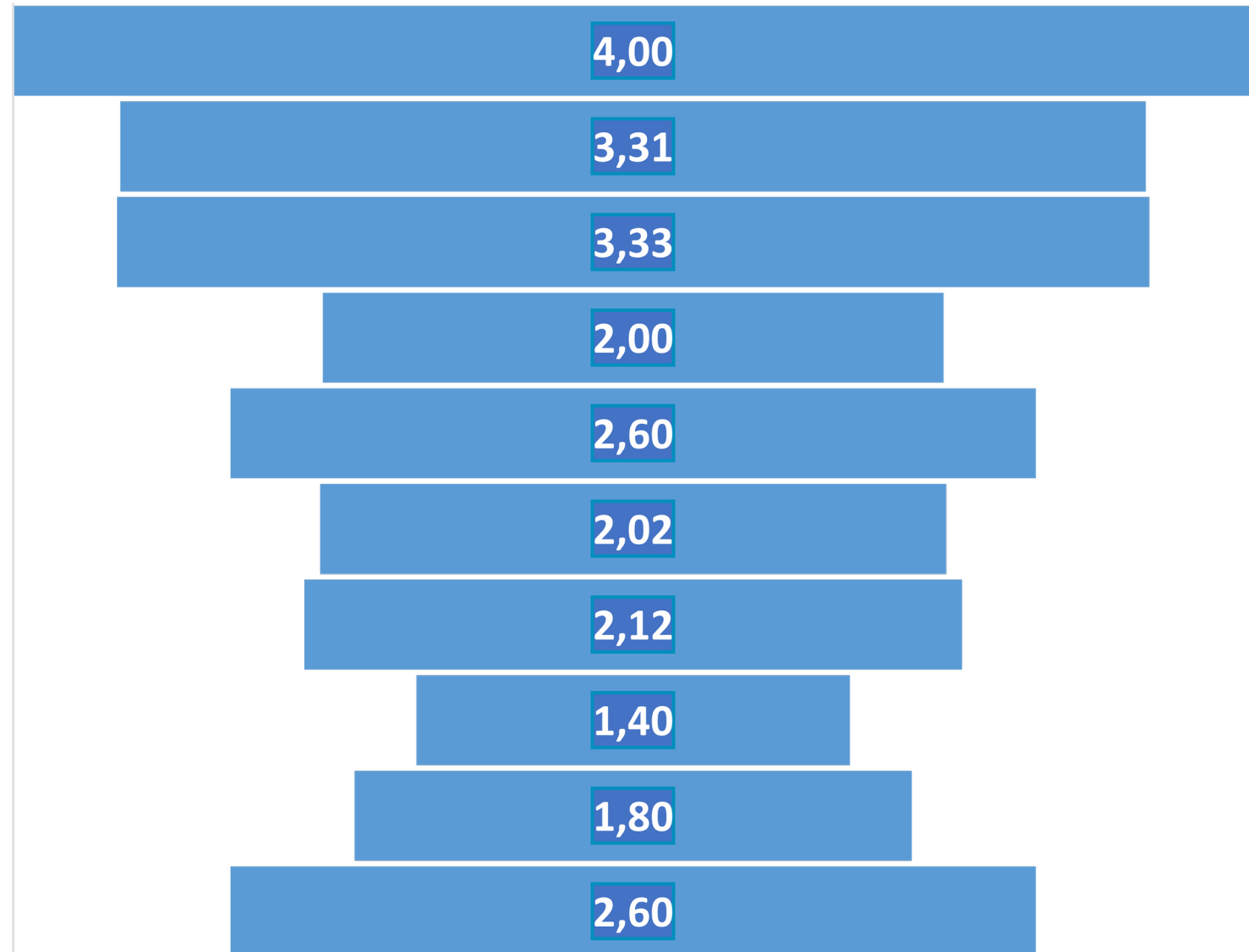




# Advisors' values on criteria

**gLOCAL**  
EVALUATION WEEK  
2022

1. Relevance of the advisory...
2. Effectiveness of the advisory...
3. Responsiveness
4. Reliability
5. Support to innovation and...
6. Tailoring advisory methods an...
7. Information/Knowledge...
8. Diversity of clients -type of...
9. Demand Articulation
10. Empathy, Assurance and oth...





# Advisors' values on sub-criteria

gLOCAL





# Conclusions on the co-construction process

**gLOCAL**  
EVALUATION WEEK  
2022

- Cognitive and developmental pathway
- Rejection/Reluctance
- Awareness
- Consciousness
- Appreciation
- Strategy development
- Organization/Take- action
- Put- in- use
- Up- take





## CRITERION 1 – Relevance of advisory services

*Content is relevant to farmers/customers (advisory content is driven by needs and opportunities)*

An innovative aspect for the advisor could be connecting ordinary advice to a more strategic advice. For instance, when we give advice on the use of pesticides we are already making a shift because we are supporting the farm in moving from integrated production to organic ...

we should be able to get people to think, for example, about the effects of pollution on the soil or the air, because an impoverished soil reflects on productivity, or on the concomitance of pollution with climate change and, therefore, on the need to change production to make their soil and their production context less vulnerable.....

I wonder: do those who provide routine advice, giving prompt and immediate answers, have the time and expertise to slowly shift the farmer's attention to a strategic vision as well?



## CRITERION 2 - Effectiveness of advisory services

*Ability to solve problems in practical terms or achieve given objectives*

Anticipating needs is very difficult because when the client does not give you any indication and you go into unfamiliar topics you put yourself in question because there is a risk that new problems will arise for you. However, this support in getting the vision is very important for exploring the competence needs of the advisor, otherwise you are always one step behind. I am thinking for example about digital competences: many farmers do not express their needs, because they are not aware of them, and therefore we would never think of having a training need in digital competences. Instead, if we anticipate the need by looking at markets or other business models we will be on a path to innovation





## CRITERION 5 - Support for innovation and transition

*Ability of the advisory to support processes of innovation and transition to different systems (e.g. organic farming)*

I often advise on innovation and transition processes. I give a lot of importance to this criterion even though, clearly, once this type of advice has been given, the client moves on to colleagues specialised in the areas of innovation



## CRITERION 7 - Information/knowledge transfer

***Ability to provide even general information and knowledge that raises awareness with respect to the overall management of the farm The advisor suggest the farmer what to do about a known problem with several solutions***

This criterion is also very important and, in this respect, I would say that sub-criterion 7.3 (Skills in environmental management) has a strong connection with sub-criterion 7.1 (Fulfilments) because when we give advice on environmental management, we almost always talk about regulations to be complied with, and our role is also to point out that regulations must be observed. In this criterion I would include a sub criterion concerning animal welfare, which we deal with a lot, but also a sub criterion concerning biocides to be used against parasites in animals is missing, and in this field there is no sustainable use, there is no knowledge, and very often we also have to train veterinarians.

Simona Cristiano [simona.cristiano@crea.gov.it](mailto:simona.cristiano@crea.gov.it)

Patrizia Proietti [patrizia.proietti@crea.gov.it](mailto:patrizia.proietti@crea.gov.it)

Alberto Sturla [alberto.sturla@crea.gov.it](mailto:alberto.sturla@crea.gov.it)

Valentina Carta [valentina.carta@crea.gov.it](mailto:valentina.carta@crea.gov.it)