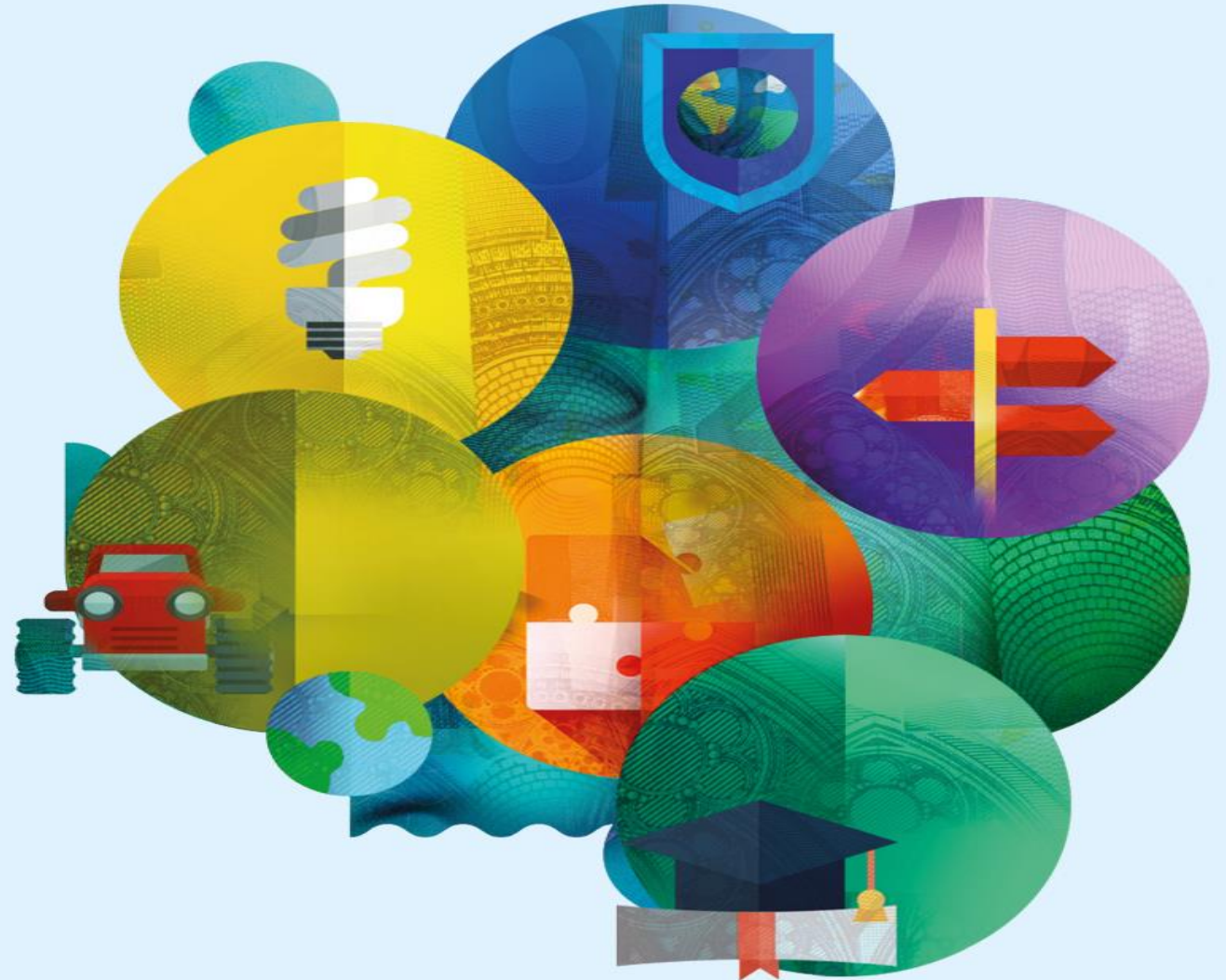


# Sectoral data needs for monitoring and evaluation

***THE EXPERT GROUP FOR MONITORING AND  
EVALUATING THE CAP***

***25/10/2021***



## DM&E: Data set for sectoral data

- Legal basis: same as for other types of interventions: Art 143 (ex-129) SPR
- Same data set presented to the MS in 2020 with very limited modifications
- Underlying principles
  - Continuation of the current practices to the extent possible
  - No duplication of submission for the same data
- New element: method established by MS for determining the number of beehives
  - Based on current ISAMM form 161, annex 2
- MSs additional suggestions welcome

## DM&E: Data modules for sectoral data

- ISAMM continues to be the main IT tool for sectoral data transmission
- Most of the data based on current CMO DA/IAs → continuation of the current practice. Data for monitoring and evaluation from current ISAMM forms:
  - form 93, parts 2-3 for F&V
  - forms 652, 653, 749, 58, 59, 78 and 83 for wine.
  - forms 161 annexes (Form 161 will be adjusted)
- New ISAMM forms: data at operational programme or intervention level on the performance of the POs/OPs: section A of Annex II of the June 2020 note

## APR: Data modules for sectoral data

- IT tool for indicator-related sectoral data, submitted in the APR: SFC2021
  - Aggregated values of outputs, based on indicators O.34, O.35, O.36 and O.37
  - Contribution of sectoral interventions to results, if direct and significant
- Data currently transmitted via ISAMM but via SFC in the future:
  - ISAMM form 93, part 4 for F&V and to expanded for other sectors (sectoral contribution to results)
  - ISAMM form 591, number of beehives: form 161

## DM&E: Modalities of the data transmission

- Period of reporting: financial year N (16 Oct year N-1 – 15 Oct year N)
- Timing of data transmission: 15 June N+1
- Certification of data: general rules (data systems, not data)
- Corrections to data: general rules