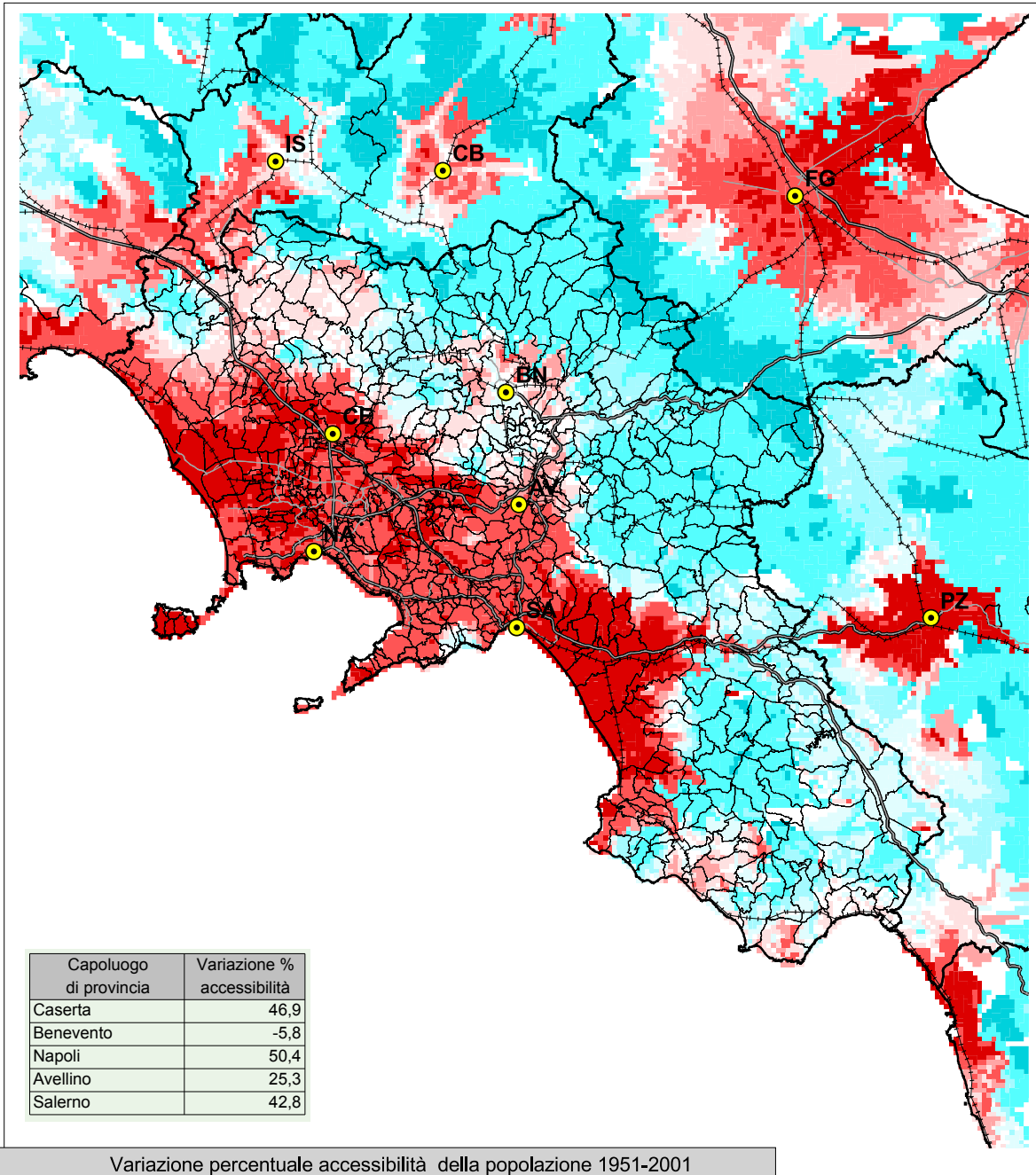
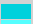



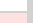






**fig. 4f - Differenza di accessibilità della popolazione residente
1951- 2001 tempo 30'**



Variazione percentuale accessibilità della popolazione 1951-2001

 inferiore a -50%	 da -10% a -2%	 da 10% a 20%
 da -50% a -20%	 da -2% a 2%	 da 20% a 50%
 da -20% a -10%	 da 2% a 10%	 oltre 50%