



*Rome, 23<sup>rd</sup>-24<sup>th</sup> June 2011*

Present and future role of forest resources in the socio-economic development of rural areas

***PLENARY SESSION***

***23<sup>rd</sup> June 2011***

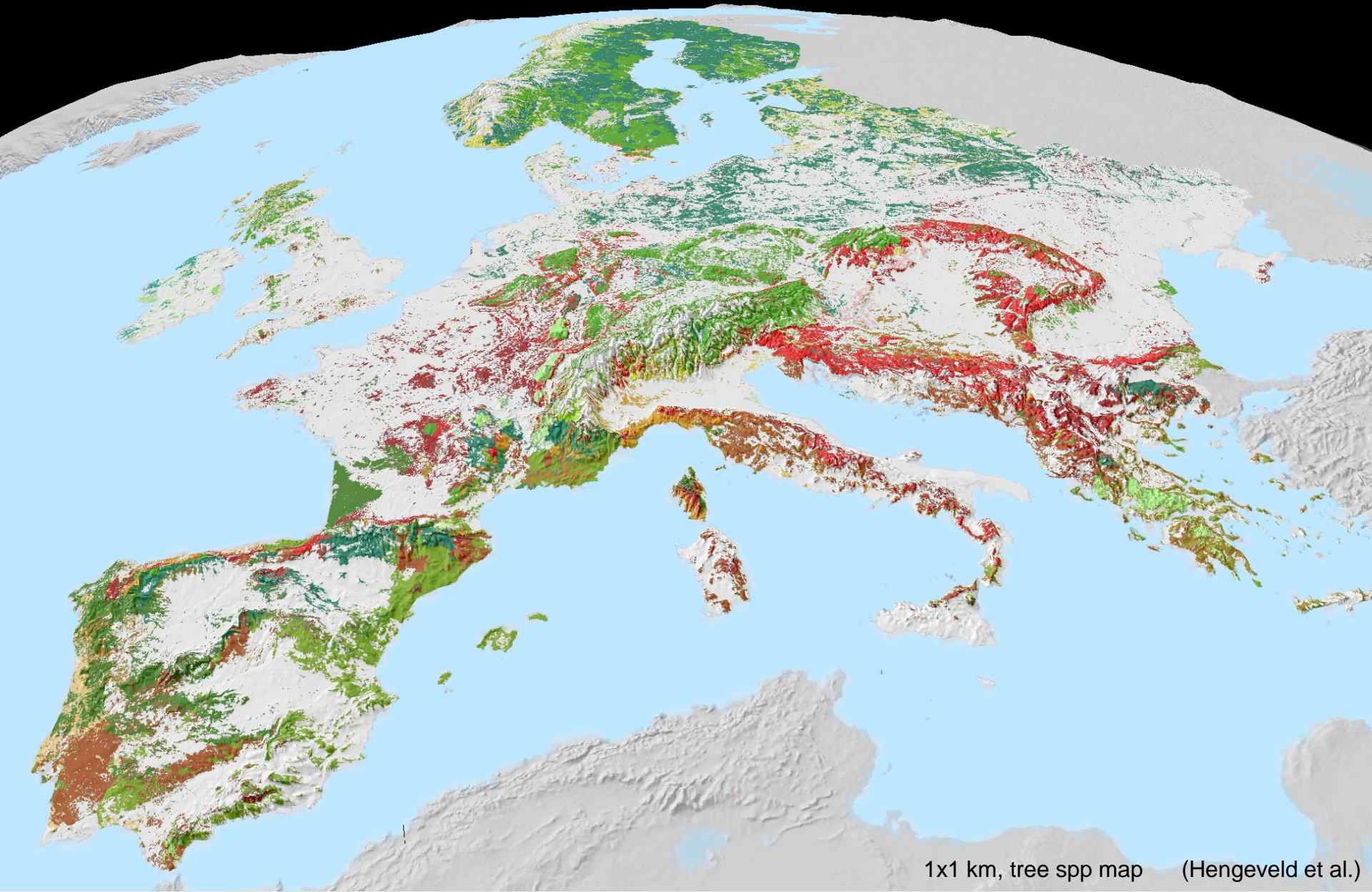
# ***Future of European Forests - their role in socio economic development***

***Gert-Jan Nabuurs***



*Assistant Director of EFI*  
European Forest Institute  
[gert-jan.nabuurs@efi.int](mailto:gert-jan.nabuurs@efi.int)

# European forests



1x1 km, tree spp map (Hengeveld et al.)

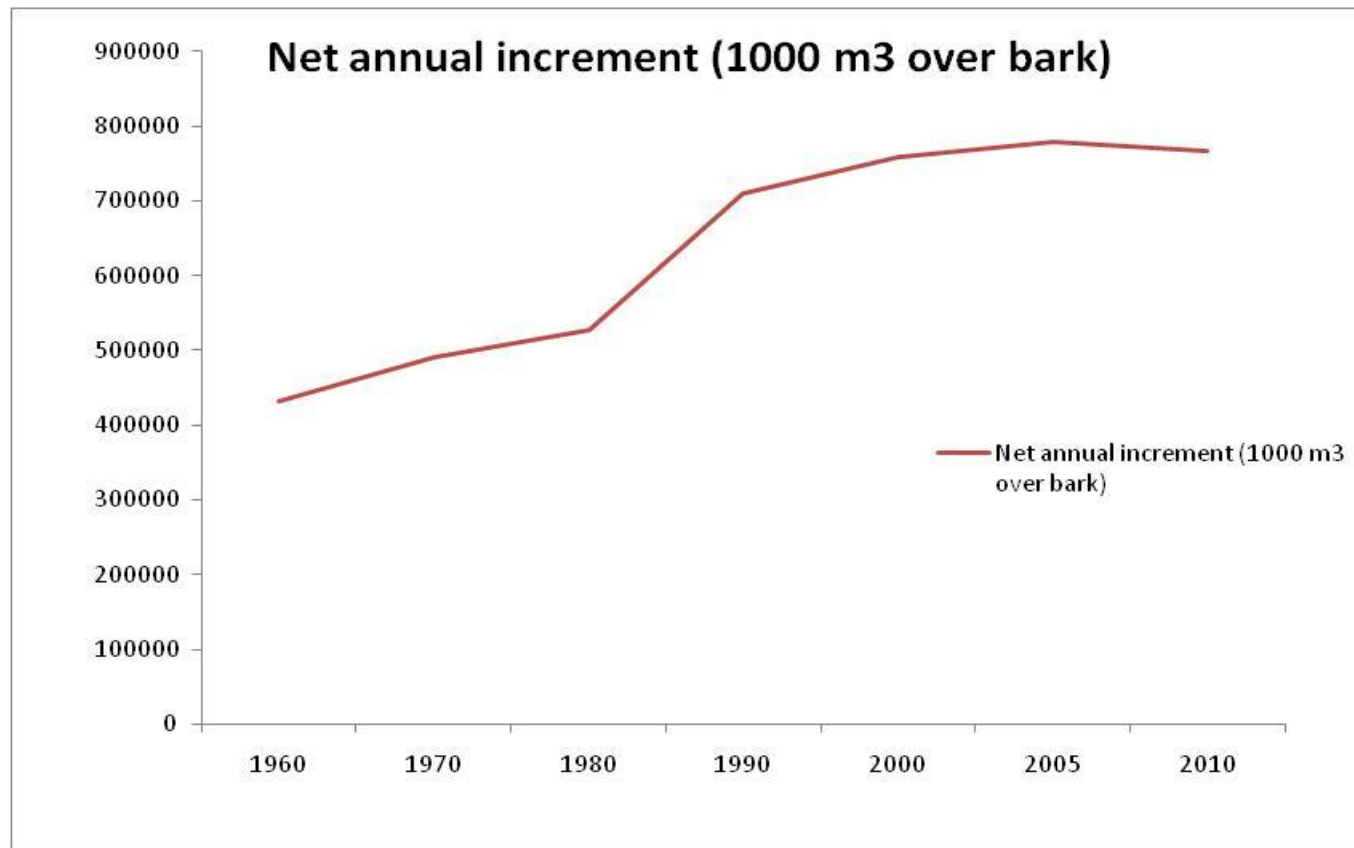


- Issues in European forests & forestry
- Outlooks
- Research directions



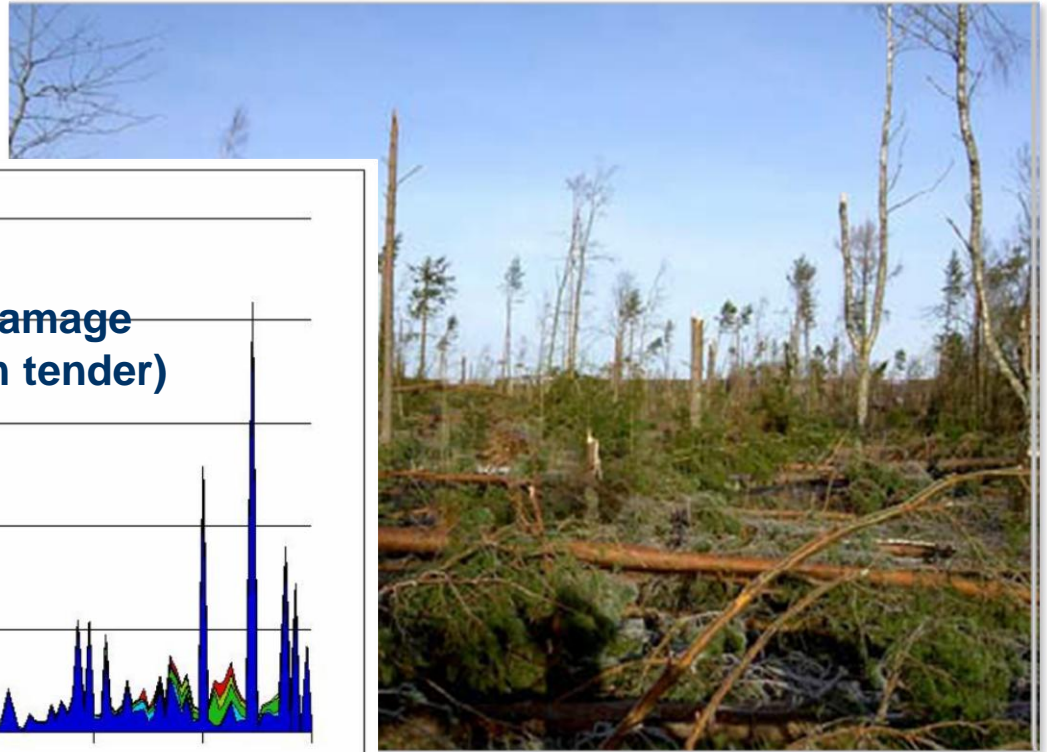
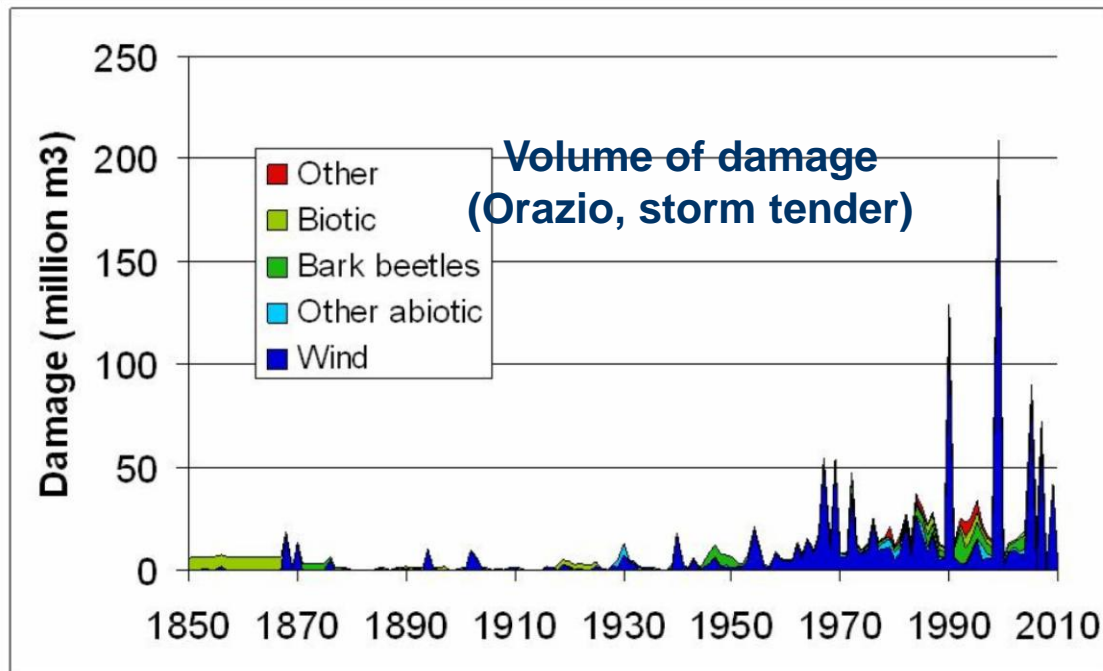


# Is increment curbing?



State of Europe's forests (UNECE & FAO)

# Ever higher growing stocks lead to increased disturbances



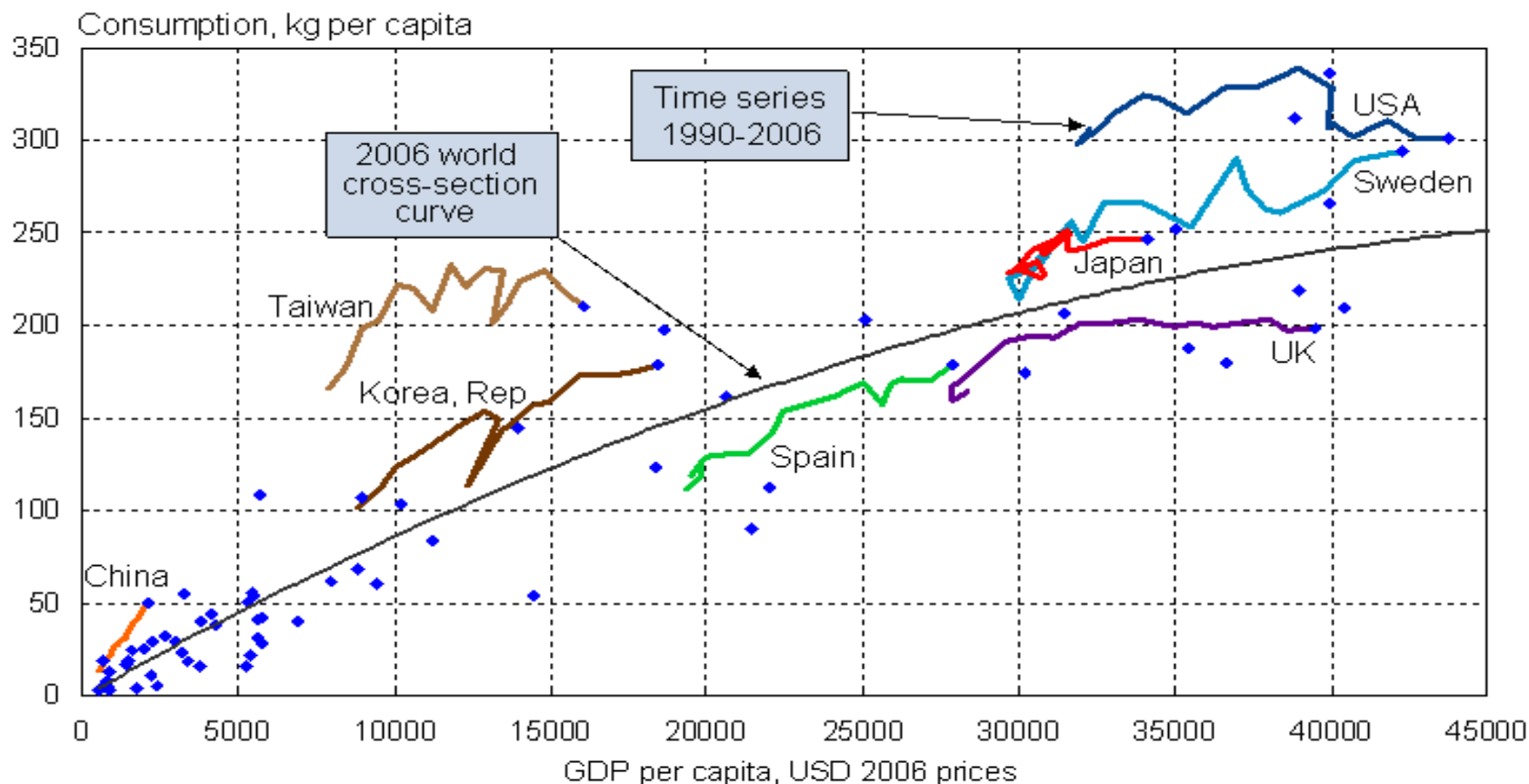
# Biodiversity

- ~ 20% of species under threat;
- ~ 60% of forest habitats unsuitable
- Natura2000 as a first step





# GDP and Paper Consumption per Capita





# Energy price

- Industry faces increasing and fluctuating energy prices: energy policies aim at higher share of bio energy
- This gives opportunities to the forest sector: intense search for new innovative products

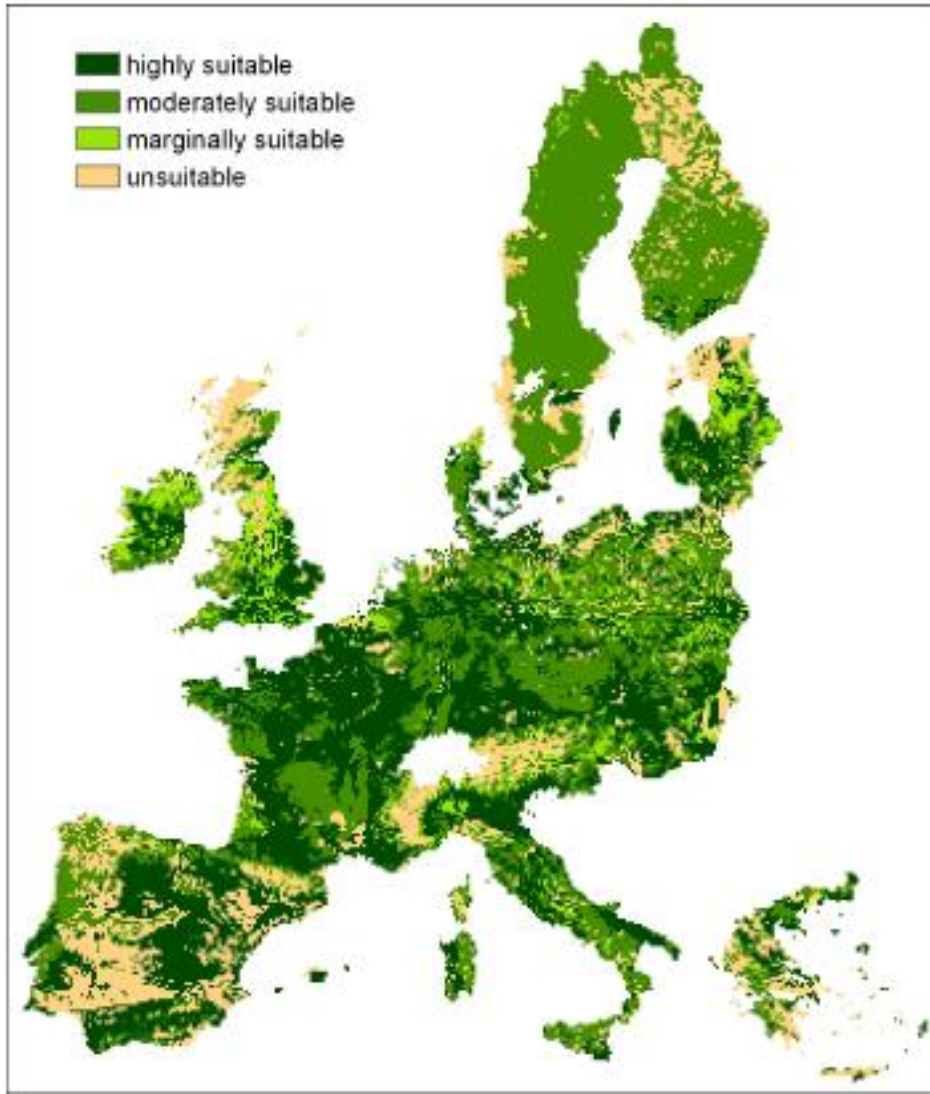


Source: U.S. Energy Information Administration





# Bio energy will lead to an extra demand for wood



Where is it available

And how to mobilise

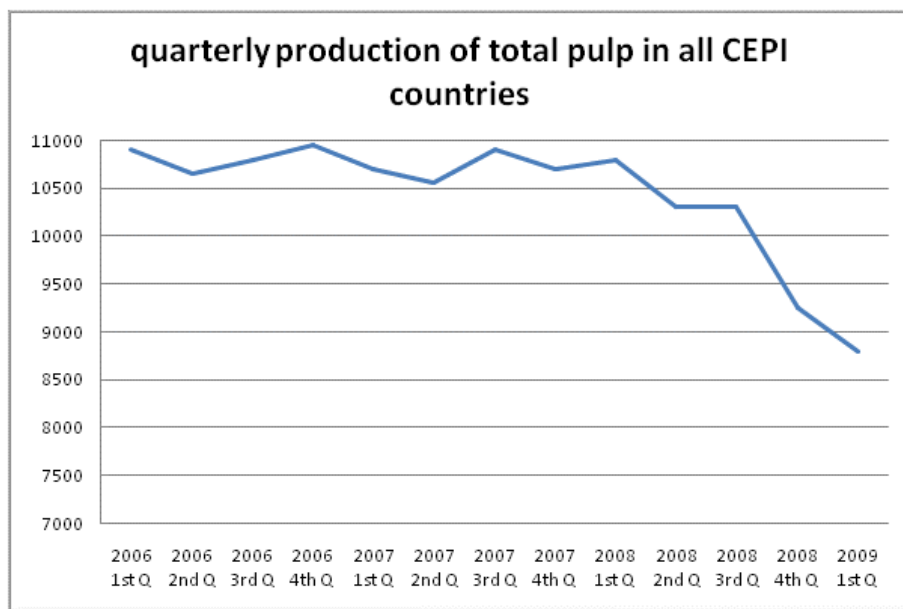
Lindner et al. 2006. EFI for EEA





# Depopulation (ageing) of country side, and rural development

## Low profitability of forests

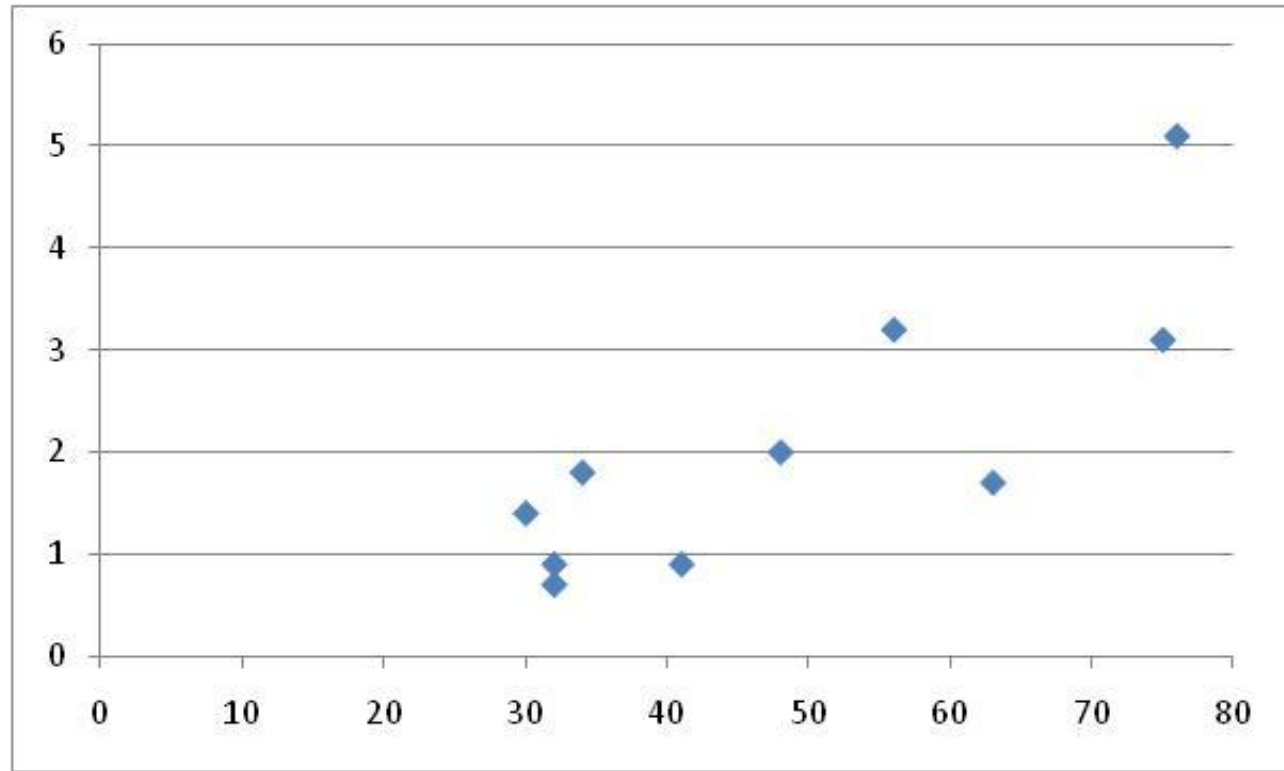




# Forest sector's small contribution to GVA

SOEF 2011 , UNECE & FAO

contribution to  
national GVA  
(%)



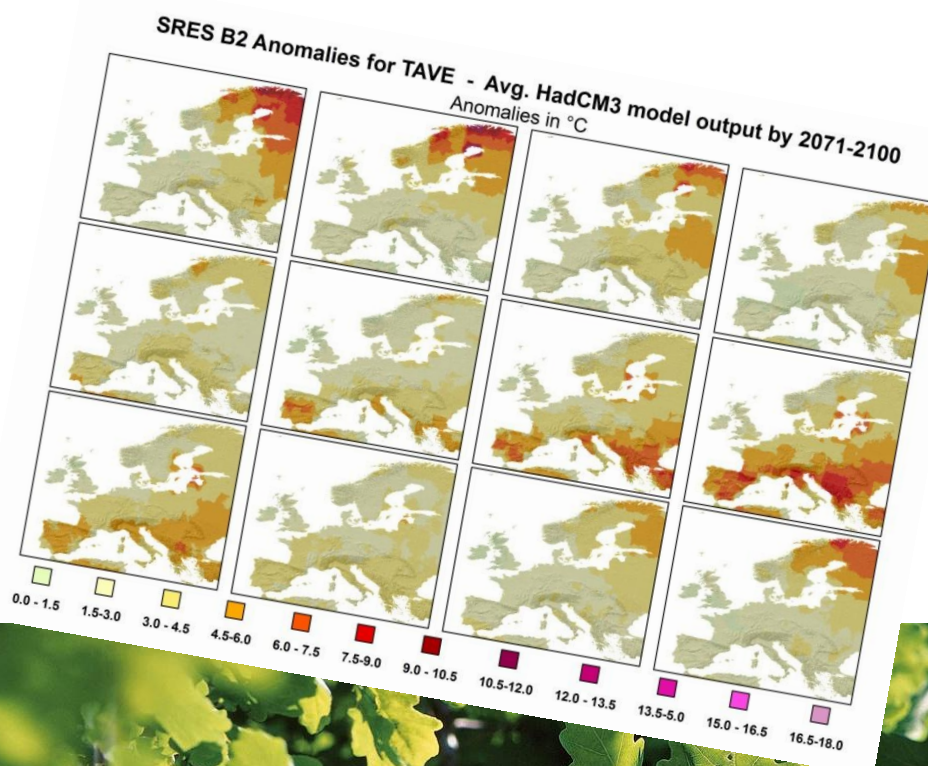
% land covered with forest





# Outlook studies

- strong assumptions in social developments, ecological, economic, etc
- huge variety across Europe

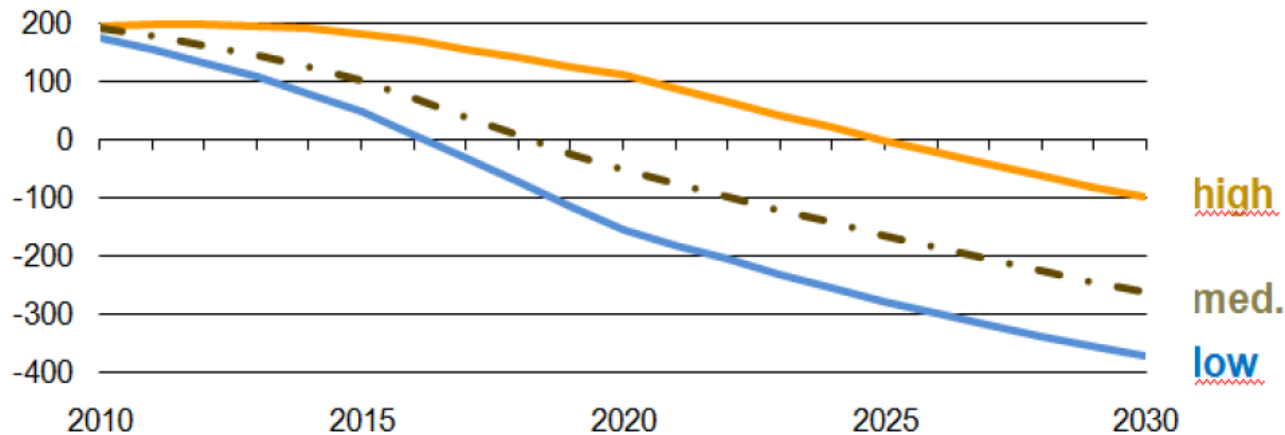




# Will there be a shortfall ?

in M m<sup>3</sup> - comparing plot

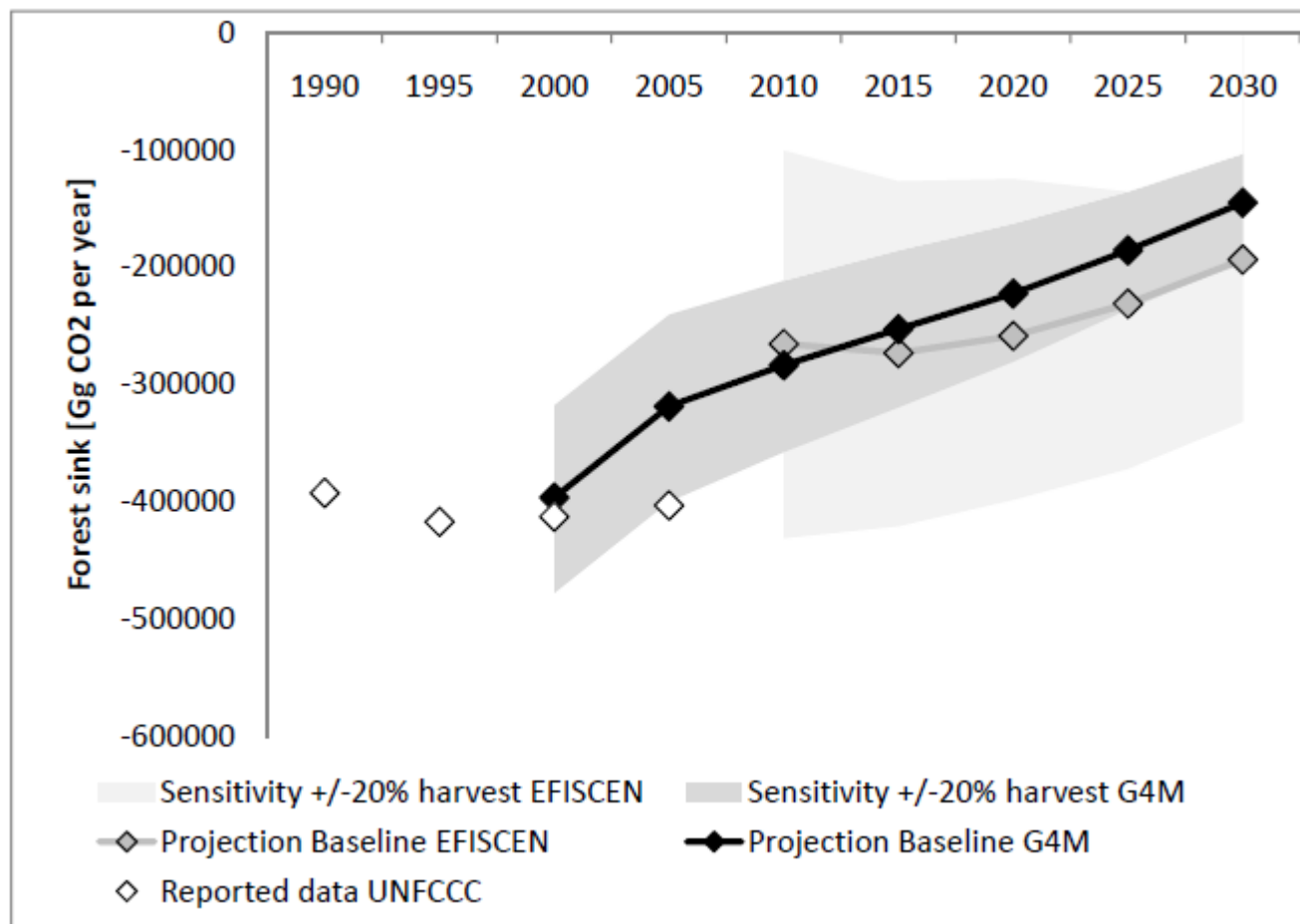
## 3 Shortage between demand and supply



- demand continues to increase
  - a shortfall is foreseen around 2020
  - this will further hamper economic development, and rural development
- (EUWood project, Mantau et al. 2010)



# Will the sink sustain ?



LULUCF tender  
Bottcher, Verkerk &  
Schneider





# Research needs



# Research activities

**Europe: fragmented research; too much capacity in ecology and silviculture ?**

**too little capacity in economics, products, policy**



# Research needs

- innovation along the chain
- improved value chains (& e.g. carbon neutral buildings)
- new products (bio refineries)
- link to SME's
- role of forests in green economy
- regional action plans (diversify across Europe)
- Russian forest resources





# Research needs

- impacts of climate change; regional diversity
- risks, new diseases, insects
- improved/specialised tree species through genetic improvement and breeding



# Research needs

- research infrastructure needs to be improved
- facilities across Europe
- better linked to policy support



# Thank you